



Short communication

Discordance rates between Trofile[®] test and short-term virological response to maravirocMiguel Genebat^a, Ezequiel Ruiz-Mateos^a, Alejandro González-Serna^a, Ildefonso Pulido^a, M^a Ángeles Muñoz-Fernández^b, Sara Ferrando-Martínez^a, Manuel Leal^{a,*}^a Laboratory of Immunovirology, Biomedicine Institute of Seville (IBIS), Service of Infectious Diseases; Virgen del Rocío University Hospital, Seville, Spain^b Molecular Immunobiology Laboratory, Gregorio Marañón University Hospital, Madrid, Spain

ARTICLE INFO

Article history:

Received 24 September 2010

Received in revised form

24 November 2010

Accepted 29 November 2010

Keywords:

Tropism assay

Maraviroc

Clinical approach

ABSTRACT

Enhanced sensitivity Trofile[®] (ES-Trofile[®]) is the most frequently used technique to assay HIV tropism. A clinical approach to predict CCR5-antagonists efficacy, based on the virological response to a short-term maraviroc exposure (Maraviroc Clinical Test, MCT), has been recently reported. We compared the results of ES-Trofile[®] with MCT in 47 HIV-infected patients, and a global discordance around 15% was observed between the phenotypic method and the clinical approach. Discordance results were mainly found in patients with an ES-Trofile[®] reported as dual/mixed. These provocative results might have important clinical implications and should be considered in order to accurately prescribe treatment with CCR5 antagonists.

© 2010 Elsevier B.V. All rights reserved.

Current validated assay to test HIV tropism is Trofile[®], by Monogram BioSciences (Whitcomb et al., 2007). An enhanced sensitivity Trofile[®] (ES-Trofile[®]) with a greater capacity to detect minor populations of CXCR4 (X4)-tropic virus is now available (Reeves et al., 2009). However, limitations such as the long waiting time and around 20% of “non-reportable” results make it necessary to explore additional methods to test HIV tropism in order to prescribe the CCR5 antagonist maraviroc (MRV). A clinical approach (Maraviroc Clinical Test, MCT) has recently been reported (Genebat et al., 2009), indicating that the virological response to a short-term MRV exposure could predict the indication for CCR5 (R5)-antagonists use. In this previous study, MCT and ES-Trofile[®] results were compared in 34 HIV-infected subjects with detectable viral load; a high concordance between both methods was observed (93.5%). Since then, the number of patients on MCT has increased. On the other hand, ES-Trofile[®] does not usually report results if the viral load is <1000 HIV-RNA copies/ml. Hence, for the comparison analysis, patients with detectable viral load of <1000 HIV-RNA copies/ml should not be considered. Thus, the aim of this study was to analyze discordance rates between the tropism result reported by

ES-Trofile[®] and the MCT result, in a larger HIV-infected population with viral load ≥ 1000 HIV-RNA copies/ml.

Between July 2008 and March 2010, 47 asymptomatic and treatment experienced HIV-infected patients with persistently detectable viral load attended at the Infectious Diseases Service, Virgen del Rocío University Hospital (Seville, Spain), started an eight-day monotherapy with MRV (MCT) as previously reported (Genebat et al., 2009). When compared with the previous study, only patients with viral load >1000 HIV-RNA copies/mL were considered: 33/47 patients (70.2%) were receiving no antiretroviral therapy (cART), as they had self-abandoned cART or remained under supervised treatment interruption (real MRV monotherapy: MRV without cART during eight days on MCT), while 14/47 (29.8%) subjects were on a failing cART and MRV was added for eight days to this therapy (functional MRV monotherapy: MRV plus previous failing cART during eight days on MCT). MCT was considered positive if a reduction $\geq 1 \log_{10}$ HIV-RNA copies/mL or undetectability (<40 HIV-RNA copies/ml) was achieved after eight days of MRV exposure. An ES-Trofile[®] was performed from blood samples on the same day starting MCT (90%) or, if not possible, on samples obtained not more than 12 weeks before starting MCT. The result of MCT was compared with the tropism assay reported by ES-Trofile[®].

Baseline characteristics of the patients were: 36 (76.6%) were males, 18 (38.3%) showed hepatitis C virus coinfection and 13 (27.7%) had developed a previous AIDS-defining event (CDC stage C). Baseline median [interquartile range (IQR)] age was 43 [37–47] years, time since HIV diagnosis was 17 [12–20] years, viral load $4.71 \log_{10}$ HIV-RNA copies/mL [4.19–5.07] and CD4⁺ cell count 221 [92–431] cell/mm³. Adherence to therapy during MCT was self-

Abbreviations: ES-Trofile[®], enhanced sensitivity Trofile[®]; X4, CXCR4; MRV, maraviroc; MCT, Maraviroc Clinical Test; R5, CCR5; cART, combined antiretroviral therapy; D/M, dual/mixed.

* Corresponding author at: Laboratory of Immunovirology, Biomedicine Institute of Seville (IBIS), Service of Infectious Diseases; Av Manuel Siurot s/n, Virgen del Rocío University Hospital, PC 41013 Sevilla, Spain. Tel.: +34 955013291; fax: +34 955013292.

E-mail address: mleal@telefonica.net (M. Leal).

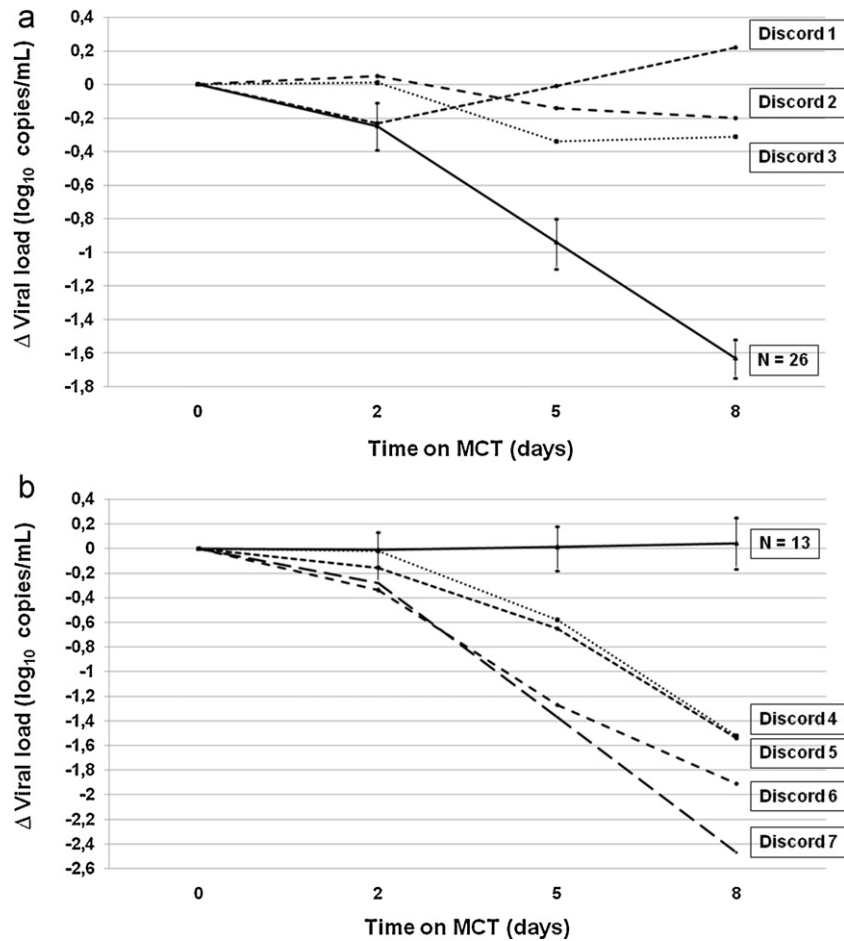


Fig. 1. (a) Viral load evolution in patients reported as R5 by ES-Trofile[®] (N = 29). Mean viral load evolution and confidence interval 95% (CI 95%) is shown in 26/29 patients who achieved a viral load reduction > 1 \log_{10} HIV-RNA copies/mL during MCT. Three patients (Discord 1, Discord 2 and Discord 3) showed no viral load modification during MCT despite ES-Trofile[®] being reported as R5 (3/29 = 10.3%). (b) Viral load evolution in patients reported as D/M by ES-Trofile[®] (N = 17). Mean viral load evolution and confidence interval 95% (CI 95%) is shown in 13/17 patients who showed no viral load modification during MCT. Four patients (Discord 4, Discord 5, Discord 6 and Discord 7) experienced a viral load reduction > 1.5 \log_{10} HIV-RNA copies/mL despite ES-Trofile[®] being reported as D/M (4/17 = 23.5%).

reported by patients and estimated through Pharmacy registers, being 100% in all patients.

Results of ES-Trofile[®] were: 29/47 (61.7%) patients were reported to be infected by R5-tropic HIV variants (R5 patients) and 17/47 (36.2%) by dual/mixed (D/M) tropic virus (D/M patients); 1/47 (2.1%) was non-reportable and this patient achieved virus undetectability after MCT. As shown in Fig. 1a, mean viral load reduction > 1.6 \log_{10} HIV-RNA copies/mL was observed during MCT in 26/29 patients with R5-tropic virus according to ES-Trofile[®]. On the other hand, as shown in Fig. 1b, no viral load modification was observed in 13/17 patients with an ES-Trofile[®] reported as D/M. However, 3/29 (10.3%) patients with R5-tropic virus showed no viral load modification after MCT (Fig. 1a), while 4/17 (23.5%) patients with D/M virus experienced a viral load reduction > 1.5 \log_{10} HIV-RNA copies/mL (Fig. 1b); thus, the global discordance rate between MCT and ES-Trofile[®] was 7/46 (15.2%). Results of MCT and ES-Trofile[®] are summarized in Table 1. The discordance rate was higher in patients reported as D/M compared to patients with tropism reported as R5, although not statistically significant (23.5% vs. 10.3%, respectively; $p = 0.22$, Chi-square test). Three patients with R5-tropic virus and no viral load reduction after MCT started a MRV-sparing cART, according to the MCT result. Immunovirological evolution of these patients after MCT is shown in Fig. 2a; two of them remained with undetectable viral load after 36 and 48 weeks, respectively, while the other patient achieved a viral load reduction > 3 \log_{10} HIV-RNA copies/mL after 24 weeks.

Three patients with D/M tropic virus and positive MCT started a MRV-containing regimen after MCT, combined with lamivudine plus abacavir. Immunovirological evolution of these patients is shown in Fig. 2b; viral load was undetectable after 12, 36 and 48 weeks, respectively. The other patient with positive MCT and an ES-Trofile[®] reported as D/M refused to start cART after MCT.

The results presented herein show unexpected rates of discordance (around 15%) between the short-term virological response to MRV and the results reported by ES-Trofile[®]. The long periods of infection shown by our patients, that make the presence of X4-tropic variants easier, could be influencing the discordance rates. However, it should be noted that those are the MRV guidelines for clinical practice, as shown in the MOTIVATE studies (Gulick et al., 2008), and this is the context that should be considered when regarding discordance analysis. Hence, clinicians are currently taking decisions based on an assay that, according to our results, might not ensure virological success. Finally, discordance rates shown in this study should not be extended to HIV-infected cART naive subjects.

Discordance observed in R5 patients could be explained, despite maintaining the viral tropism as R5, because MRV could be non effective due to changes in the V3 loop that could be related with CCR5-antagonist resistance (Soulié et al., 2008); hence, despite an adequate tropism reported by ES-Trofile[®], virological efficacy could be impaired. If this is the case, MCT would be a useful tool to detect these particular patients. On the other hand, discordance observed

Download English Version:

<https://daneshyari.com/en/article/2510577>

Download Persian Version:

<https://daneshyari.com/article/2510577>

[Daneshyari.com](https://daneshyari.com)