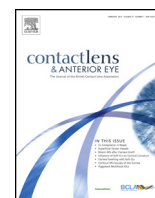




Contents lists available at ScienceDirect

# Contact Lens & Anterior Eye

journal homepage: [www.elsevier.com/locate/clae](http://www.elsevier.com/locate/clae)

## Distribution of normal superficial ocular vessels in digital images



Touka Banaee<sup>a,\*</sup>, Asieh Ehsaei<sup>b,c</sup>, Hamidreza Pourreza<sup>d</sup>, Mohammad Khajedaluae<sup>e</sup>,  
Mojtaba Abrishami<sup>a</sup>, Mohsen Basiri<sup>a</sup>, Ramin Daneshvar Kakhki<sup>a</sup>, Reza Pourreza<sup>d</sup>

<sup>a</sup> Retina Research Centre, Mashhad University of Medical Sciences, Mashhad, Iran

<sup>b</sup> Refractive Error Research Centre, School of Paramedical Sciences, Mashhad University of Medical Sciences, Mashhad, Iran

<sup>c</sup> Department of Optometry, School of Paramedical Sciences, Mashhad University of Medical Sciences, Mashhad, Iran

<sup>d</sup> Computer Engineering Department, Faculty of Engineering, Ferdowsi University of Mashhad, Mashhad, Iran

<sup>e</sup> Department of Social Medicine, Mashhad University of Medical Sciences, Mashhad, Iran

### ARTICLE INFO

#### Article history:

Received 17 December 2012

Received in revised form 11 July 2013

Accepted 12 July 2013

#### Keywords:

Conjunctiva  
Ocular vessel  
Digital image  
Photography

### ABSTRACT

**Purpose:** To investigate the distribution of different-sized vessels in the digital images of the ocular surface, an endeavor which may provide useful information for future studies.

**Methods:** This study included 295 healthy individuals. From each participant, four digital photographs of the superior and inferior conjunctivae of both eyes, with a fixed succession of photography (right upper, right lower, left upper, left lower), were taken with a slit lamp mounted camera. Photographs were then analyzed by a previously described algorithm for vessel detection in the digital images. The area (of the image) occupied by vessels (AOV) of different sizes was measured. Height, weight, fasting blood sugar (FBS) and hemoglobin levels were also measured and the relationship between these parameters and the AOV was investigated.

**Results:** These findings indicated a statistically significant difference in the distribution of the AOV among the four conjunctival areas. No significant correlations were noted between the AOV of each conjunctival area and the different demographic and biometric factors. Medium-sized vessels were the most abundant vessels in the photographs of the four investigated conjunctival areas. The AOV of the different sizes of vessels follows a normal distribution curve in the four areas of the conjunctiva. The distribution of the vessels in successive photographs changes in a specific manner, with the mean AOV becoming larger as the photos were taken from the right upper to the left lower area.

**Conclusions:** The AOV of vessel sizes has a normal distribution curve and medium-sized vessels occupy the largest area of the photograph.

© 2013 British Contact Lens Association. Published by Elsevier Ltd. All rights reserved.

### 1. Introduction

The conjunctiva has attracted the attention of physicians since ancient times. As a tissue on which small vessels of the body are visible to the naked eye, it has served as a major site for the diagnosis of many diseases. In spite of the conjunctiva being such an important tissue for examination, little has been investigated regarding the quantification of its changes. This is due in part to the great variability in the distribution, shape and size of the conjunctival vessels and/or their brisk responsiveness to various stimuli which can cause instant changes in the vascular pattern. Previous attempts for studying conjunctival vessels have included the manual extraction of vascular data from their photographs

[1] or video captures [2]. In the automated world, computer algorithms can effectively serve this purpose. For example, Chen et al. [3] first used image processing algorithms to study conjunctival vessels. Owen and colleagues employed an algorithm for the detection of conjunctival vessels and the quantification of their changes in diabetic patients [4,5]. In another study, Fukushima and Tomita utilised a computer algorithm to study the changes induced by the histamine challenge of the conjunctiva in guinea pigs [6].

Previous studies have shown that the objective investigation of the conjunctival hyperemia is considerably more reliable and repeatable than subjective grading [4,7,8]. Therefore, attempts to employ computerized algorithms for the evaluation of conjunctival vessels are becoming more common during the past few years.

In the present study, a Radon transform-based algorithm for the detection of vessels in digital images [9] was used for the quantitative investigation of normal conjunctival vessels in a large population of normal individuals. This information may serve as

\* Corresponding author at: Retina Research Center, Khatam-Al-Anbia Hospital, Abutaleb Junction, Ghareni Blvd, 91959-61151 Mashhad, Iran.  
Tel.: +98 511 7281401; fax: +98 511 7289911.

E-mail addresses: [tkbanaee@gmail.com](mailto:tkbanaee@gmail.com), [banaeet@mums.ac.ir](mailto:banaeet@mums.ac.ir) (T. Banaee).

baseline data for studying conjunctival vascular disorders and the response of conjunctiva to various stimuli.

## 2. Methods

### 2.1. Study population

Normal individuals between 30 and 60 years of age, from the same ethnic background, were selected for the current study. Cases were recruited either from individuals seeking corrective glasses or from healthy persons accompanying patients at the Eye Hospital outpatient clinics. After the experimental procedure had been explained, an informed consent was obtained from all participants. The study followed the tenets of the Declaration of Helsinki and was approved by the Research Ethics Committee. A detailed medical history was taken and those with any history of diabetes mellitus, hypertension, anemia, dysthyroid state, rheumatic disorders or allergy were excluded from the study. Photographs of conjunctivae were taken before any ocular examinations or the instillation of any drops. Complete ocular examinations were conducted afterwards and the data of those with any ocular or adnexal pathology, except for refractive errors, were excluded from the study. The blood pressure, height and weight, fasting blood sugar (FBS) and hemoglobin of all eligible participants were measured. In addition, excluded were cases of high blood pressure (systolic blood pressure (SBP) of more than 140 mmHg or diastolic blood pressure (DBP) of more than 95 mmHg measured after five minutes of sitting) or FBS of more than 126 mg/dl.

After an initial small pilot study of 15 individuals (unpublished data) and the age pyramid of the normal population in the local community, the sample size was calculated as 300 cases (power = 90%,  $\alpha = 0.05$ ).

### 2.2. Photography

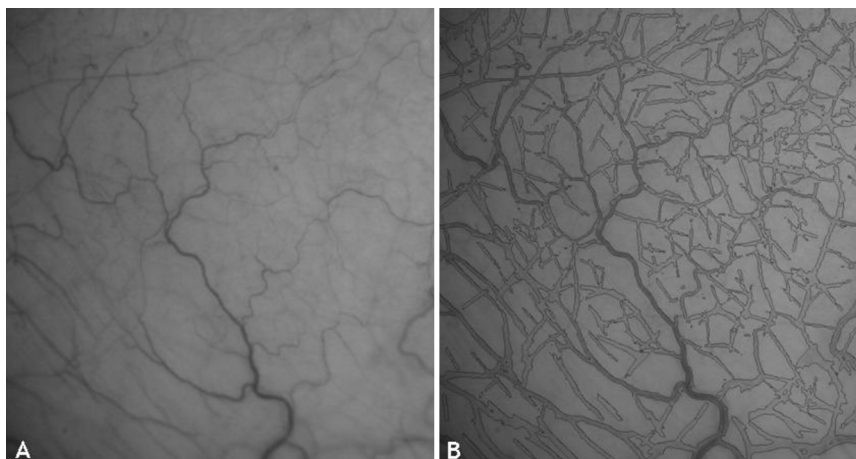
The photos were taken by a trained photographer with an YZ5S digital slit lamp microscope (Suzhou 66 Vision-Tech Co., Ltd., Suzhou, Jiangsu, P.R. China). For all participants, a unique protocol was used for photography: with a 5 V input to the slit lamp and both red-free and diffuser filters in place, the illumination arm was set at an angle of 45° and a magnification of 25× was adopted. Illumination was provided by a halogen lamp and with a wide diffuse illumination of a slit lamp (8 mm circle). The photography of all measurements was performed under similar normal room illumination. Afterward, for taking images of the superior and inferior

conjunctiva, each participant was instructed to look completely up and down. Gentle pressure was applied to open the lids in order to ensure that they did not obstruct the conjunctiva during the photography. The sequence of the conjunctival photography was as follows: the superior and inferior conjunctiva of the right eye and then the respective areas of the left eye. Photographs without flash were taken as quickly as possible to avoid dry eye and irritation. This was followed by a one-minute break before photographing the left eye. With this protocol, four conjunctival photographs were taken for each case: right upper (RU), right lower (RL), left upper (LU), and left lower (LL).

### 2.3. Computer algorithm

The algorithm used (developed by Matlab; Mathworks, Inc., Natick, MA, USA) includes a local line detector based on the Radon transform for blood vessel segmentation [9]. Briefly, the green plane of the input image, as a gray scale image, is preprocessed and divided into overlapping windows. Subsequently, a circular mask is used for each window and the Radon transform is calculated over the masked window. The Radon transform is a matrix integral transform that summates the values of a matrix in different directions. The maximum value in the Radon space specifies the direction of the line. The profile of the Radon transform in this direction is used to detect the segment of the vessel (if present). Then, the extracted vessel segment is refined. Local vessel segments are eventually merged to make the final result. Since the Radon transform is based on integration, it is robust to noise when compared to other available algorithms (Fig. 1).

The output of the algorithm was the area occupied by vessels (AOV) of different sizes as a fraction of the total pixels of the image and this was provided as a percentage. The algorithm detected vessels from 1 to 27 pixels in diameter. Very small vessels (1–4 pixels in diameter) and very large vessels (21–27 pixels in diameter) were detected in only a few cases. Therefore, these pixels were excluded from further analysis and only vessels of 5–20 pixels in diameter (16 classes of pixels in diameter) were included in the present study. It should be noted that the photographs had been previously calibrated with photographs taken from a 0.5 mm scale ruler. This was performed by using the same settings of photography and finding a conversion factor of 18  $\mu\text{m}$  for each pixel so that the vessels were comprised of vessels from 90 to 360  $\mu\text{m}$  in diameter. The main outcome measure of the study was the distribution parameters of AOV (in percentages) in four conjunctival areas of the normal population aged 30–60 years.



**Fig. 1.** Photograph of conjunctiva (A) and the result of segmentation of the vascular tree by the algorithm superimposed on it (B).

Download English Version:

<https://daneshyari.com/en/article/2699218>

Download Persian Version:

<https://daneshyari.com/article/2699218>

[Daneshyari.com](https://daneshyari.com)