

Coronary artery calcification and emphysema

Eyad K Alhaj MD, Nezam Eldeen Alhaj MD, Steven R Bergmann MD PhD, Harvey Hecht MD, TJ Matarazzo, Scott Smith, Nehad Alhaj MD, Mahmoud Alhaj MD, Stephen Nelson

EK Alhaj, NE Alhaj, SR Bergmann, et al. Coronary artery calcification and emphysema. *Can J Cardiol* 2008;24(5):369-372.

OBJECTIVE: It is thought that emphysema patients are at a higher risk of coronary artery disease. The present study is one of very few that evaluated the prevalence of significant coronary artery disease in emphysema patients using coronary artery calcification measured by electron beam computed tomography.

METHODS: A retrospective chart review evaluated 1720 consecutive patients, some of whom were self-referred. All patients had both heart and lungs imaged with electron beam computed tomography when they were seen at the Inner Imaging Center, a cardiac imaging center affiliated with the Beth Israel Hospital in New York, New York. Multiple logistic regression was performed to determine which factors were independently associated with coronary artery calcification.

RESULTS: Age, sex, hypertension and smoking were the risk factors independently associated with coronary artery calcification in the population studied. The emphysema group was significantly higher on measures of smoking and hypertension compared with the control group. Comparison of scores between the two groups using different categories for coronary artery calcification scores did not show a statistically significant difference using χ^2 analysis ($P=0.088$). However, there was a significant difference between dichotomized coronary artery calcification scores of lower than 100 and 100 or higher in patients with and without emphysema, respectively ($P=0.013$). Coexisting smoking and hypertension may contribute to the higher incidence of coronary artery calcification in emphysema patients. Symptoms of chest pain and shortness of breath were not different between the emphysema and control groups.

CONCLUSION: Emphysema patients have a higher prevalence of significant coronary artery calcification, defined as a coronary artery calcification score higher than 100.

Key Words: Calcification; Coronary; EBCT; Emphysema

It is thought that emphysema patients are at a higher risk of coronary artery disease (CAD).

The present study is one of very few that evaluated the prevalence of significant CAD in emphysema patients using coronary artery calcification (CAC) measured by electron beam computed tomography (EBCT). Emphysema was diagnosed by a lung scan using EBCT.

METHODS

Study population

The present study is a review of 1720 consecutive patients' charts (629 women, 1091 men) seen at the Inner Imaging Cardiac Imaging Center in New York, New York. Institutional review board approval was obtained before starting the study. All patients who had both lung and heart scans using EBCT between January 2001 and January 2005 were included.

Patients completed a questionnaire before the scans, detailing their cardiovascular risk factors. Patients indicated the presence or

La calcification de l'artère coronaire et l'emphysème

OBJECTIF : On pense que les patients emphysémateux sont plus vulnérables à une coronaropathie. La présente étude fait partie des très rares études à évaluer la prévalence de graves coronaropathies chez les patients emphysémateux au moyen de la calcification artérielle mesurée par tomodensitométrie à faisceau d'électrons.

MÉTHODOLOGIE : Au moyen d'une analyse rétrospective de dossiers, les auteurs ont évalué 1 720 patients consécutifs, dont certains s'étaient présentés sans recommandation. Tous les patients avaient subi une imagerie des poumons et du cœur par tomodensitométrie à faisceau d'électrons au moment de leur consultation au *Inner Imaging Centre*, un centre d'imagerie cardiaque affilié au *Beth Israel Hospital* de New York, à New York. Une régression logistique multiple a permis de déterminer les facteurs associés de manière indépendante à la calcification de l'artère coronaire.

RÉSULTATS : L'âge, le sexe, l'hypertension et le tabagisme étaient des facteurs de risque associés de manière indépendante à la calcification de l'artère coronaire au sein de la population à l'étude. Le groupe emphysémateux obtenait des résultats beaucoup plus élevés que le groupe témoin à l'égard des mesures de tabagisme et d'hypertension. La comparaison des indices entre les deux groupes au moyen de catégories différentes d'indices de calcification de l'artère coronaire n'ont pas démontré de différence statistiquement significative au moyen de l'analyse χ^2 ($P=0,088$). Cependant, on remarquait une différence considérable entre les indices de calcification de l'artère coronaire dichotomiques de moins de 100 ou d'au moins 100 chez les patients emphysémateux et non emphysémateux, respectivement ($P=0,013$). La coexistence du tabagisme et de l'hypertension peut contribuer à l'incidence accrue de calcification de l'artère coronaire chez les patients emphysémateux. Les symptômes de douleur thoracique et d'essoufflement ne différaient pas entre le groupe de patients emphysémateux et le groupe témoin.

CONCLUSION : Les patients emphysémateux avaient une prévalence plus élevée de calcification importante de l'artère coronaire, définie par un indice de calcification de l'artère coronaire supérieur à 100.

absence of a history of hypertension (treated or untreated), diabetes mellitus, current or past smoking, obesity (weight more than 20% over ideal body weight) and a first-degree family history of CAD.

EBCT

EBCT is an accessible, accurate and noninvasive test for the detection of preclinical CAD. EBCT can rapidly and noninvasively detect and quantify calcified atherosclerotic plaque in the coronary arteries. A higher quantity of coronary artery calcium is associated with the likelihood of obstructive lesions by angiography.

CAC is also associated with an increased risk of future cardiovascular disease (CVD) in middle-aged populations (1-4).

EBCT was performed with an Imatron C-150 scanner (Imatron Inc, USA).

Heart images were obtained using a 40 to 50 slice (3 mm thickness) protocol with image acquisition gated to 70% to 80% of the electrocardiographic RR interval. Exposure time was 0.1 s per image

Department of Internal Medicine, Good Samaritan Hospital, Cincinnati, Ohio, and Department of Preventive Cardiology, Continuum Heart Institute/ BIMC/Inner Imaging Center, New York, New York, USA

Correspondence: Dr Eyad Alhaj, Westside Medical Center, 10304 Memory Lane, Florence, Kentucky 41042, USA. Telephone 513-227-3354,

fax 859-746-0685, e-mail eyadalhaj@yahoo.com

Received for publication June 21, 2007. Accepted July 11, 2007

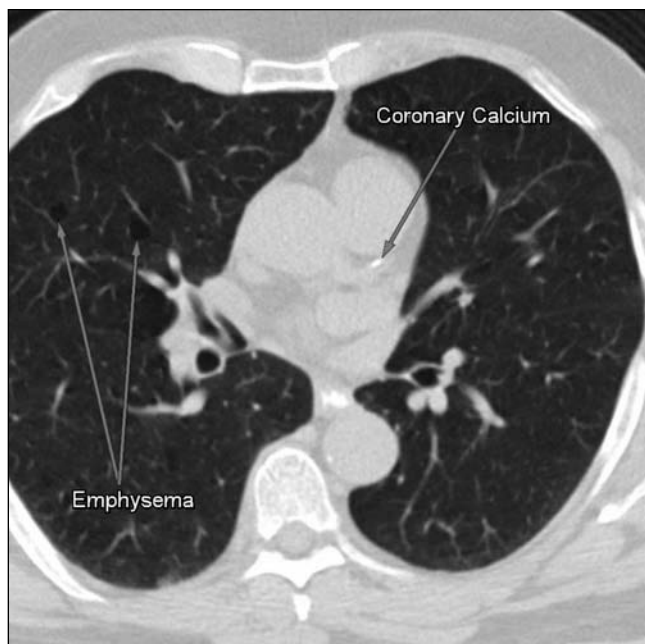


Figure 1) Electron beam computed tomography showing bullous changes and coronary calcification, indicating emphysema, in one patient

and the radiation dose was 50 mrem. Scans with at least four contiguous pixels greater than 130 HU were considered to be positive for CAC.

One radiologist, who was blinded to the questionnaire, determined the presence of emphysema based on typical bilateral bullous changes on the lung scan. CAC scores were determined using the Agatston scoring method (5). Lung images were obtained using a 120 contiguous slice (5 mm thickness) protocol, with an exposure time of 0.1 s per image and radiation dose of 150 mrem. One experienced radiologist interpreted all scans (Figure 1).

Statistical analysis

Summary statistics were generated for all variables (Table 1). All predictor variables were compared between the emphysema and control groups using *t* tests for continuous variables and χ^2 tests for categorical variables.

Multiple logistic regression was performed to determine which factors were independently associated with CAC.

RESULTS

Approximately 5% of patients (78 of 1720) had significant emphysema, characterized by typical bilateral bullous changes on the lung scan. Demographic characteristics and CVD risk factors of patients are shown in Table 1.

Forty-five per cent of patients (763 of 1720) exhibited CAC. Fifty per cent of patients (39 of 78) with emphysema were positive for CAC.

There was a significant difference between sex and the dichotomized CAC scores ($P < 0.0001$) (Figure 2).

In patients with CAC, age across groups significantly differed with sex ($P < 0.0001$) (Figure 3).

Comparison of CAC scores between the two groups using different categories for CAC scores did not show statistically significant difference using χ^2 analysis ($P = 0.088$) (Table 2, Figure 4).

The aim of the present study was to determine the difference between the group with emphysema and the group without emphysema using dichotomized scores with a cut-off value of 100, believed to indicate clinically significant disease (6-7). It was found that 19% of patients (310 of 1642) without emphysema had CAC scores of 100 or

TABLE 1
Demographic characteristics of patients with cardiovascular risk factors and symptoms

Variable	Emphysema group (n=78)	Control group (n=1642)	P
Age, years (mean \pm SD)	54.2 \pm 10.5	53.1 \pm 10.6	0.469
Sex, n (%)			0.414
Male	47 (60.3)	1044 (63.6)	
Female	31 (39.7)	598 (36.4)	
Ethnicity, n (%)			0.652
Caucasian	68 (87.2)	1406 (85.6)	
African-American	2 (2.6)	79 (4.8)	
Other	8 (10.3)	157 (9.6)	
Diabetes, n (%)			0.639
Yes	3 (3.8)	48 (2.9)	
No	75 (96.2)	1594 (97.1)	
Hypertension, n (%)			0.033
Yes	20 (25.6)	269 (16.4)	
No	58 (74.4)	1373 (83.6)	
Smoking, n (%)			<0.001
Yes	74 (94.9)	428 (26.1)	
No	4 (5.1)	1214 (73.9)	
BMI*, kg/m ² (mean \pm SD)	26.9 \pm 4.8	26.9 \pm 4.8	0.134
Family history of cardiovascular disease, n (%)			
Reported by parents			0.129
Yes	15 (19.2)	217 (13.2)	
No	63 (80.8)	1425 (86.8)	
Reported by siblings			0.664
Yes	3 (3.8)	49 (3.0)	
No	75 (96.2)	1593 (97.0)	
Chest pain, n (%)			0.643
Yes	12 (15.4)	286 (17.4)	
No	66 (84.6)	1356 (82.6)	
Shortness of breath, n(%)			0.12
Yes	15 (19.2)	215 (13.1)	
No	63 (80.8)	1427 (86.9)	

*n=1376 in the control group. BMI Body mass index

higher compared with 31% of patients (24 of 78) with emphysema. This difference was statistically significant ($P = 0.013$) (Figure 5).

Logistic regression analysis using the backward limitation-of-risks method showed that age, sex, hypertension and smoking significantly and independently contributed to CAC (Table 3).

DISCUSSION

One of the most commonly encountered comorbidities in emphysema patients is CAD. The direct relationship between chronic lung disease such as emphysema and the incidence of CVD has been known for many years (8-12).

The studies that assessed the prevalence of CAD in this population of patients were limited, and very few used CAC as a marker for atherosclerosis.

Using CAC, Newman et al (11) demonstrated that emphysema, among other variables, including age, sex, race, clinical CVD, triglyceride level and pack-years of smoking were independently associated with CAC scores in the highest quartile (defined as a CAC score higher than 918) compared with the other lower quartiles.

We used EBCT as a precise tool to diagnose emphysema, which has not been used before. We also aimed to explore the association between CAC and emphysema using different standard categories and then a cut-off of 100, which is known to imply some degree of significant CAD.

Download English Version:

<https://daneshyari.com/en/article/2732579>

Download Persian Version:

<https://daneshyari.com/article/2732579>

[Daneshyari.com](https://daneshyari.com)