

E-QUID: ANSWER / *Musculoskeletal imaging*

## Pelvic digit: A rare lesion<sup>☆</sup>



K. Bouzaïdi<sup>a,\*</sup>, A. Daghfous<sup>b</sup>, H. Chahbani<sup>a</sup>,  
M. Bouassida<sup>c</sup>, F. Jabnoun<sup>a</sup>, L. Rezgui Marhoul<sup>b</sup>

<sup>a</sup> Department of Radiology, MT Maamouri Hospital, 8000 Nabeul, Tunisia

<sup>b</sup> Department of Radiology, Trauma Center, Tunis, Tunisia

<sup>c</sup> Department of Surgery, MT Maamouri Hospital, Nabeul, Tunisia

### Observation

A 50-year-old man with a history of kidney cancer was referred to our department for evaluation of recurrent left lumbar and hypogastric pain after nephrectomy. On examination, there was no palpable mass. Biological tests were within normal limits. Plain radiograph of the pelvis (Fig. 1) and CT-scan (Fig. 2) were performed.



**Figure 1.** Plain radiograph of the pelvis.

DOI of original article: <http://dx.doi.org/10.1016/j.diii.2014.04.012>.

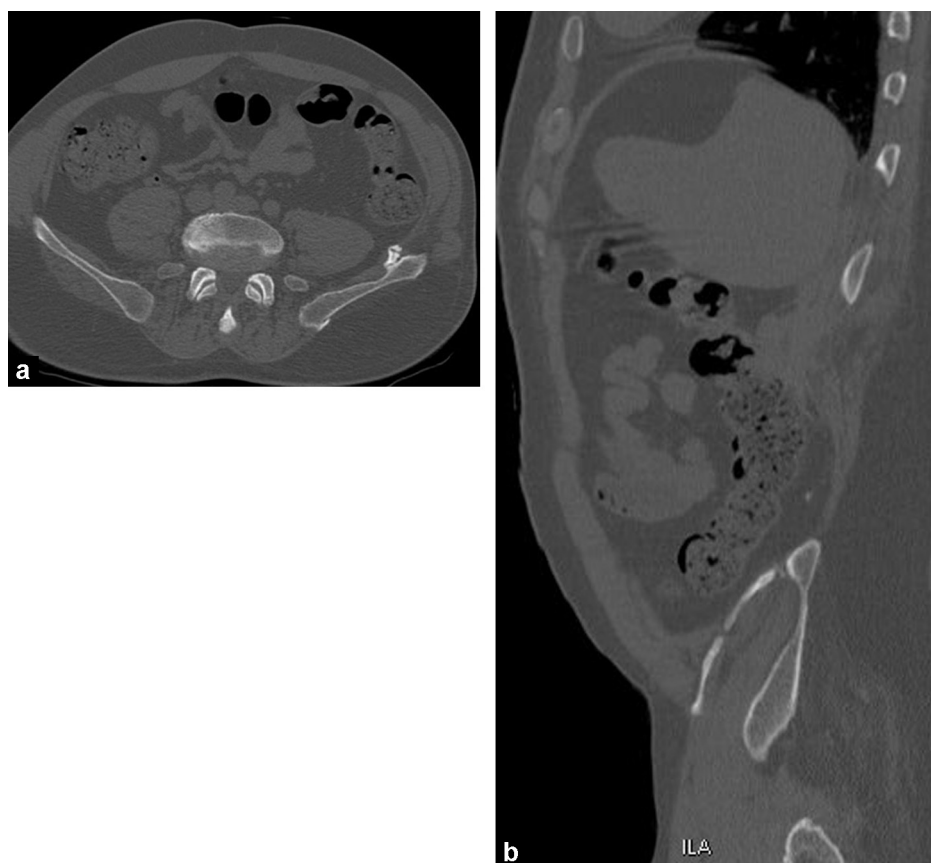
<sup>☆</sup> Here is the answer to the case “An incidental rare lesion” previously published. As a reminder we publish again the entire case with the response following.

\* Corresponding author.

E-mail address: [khaled.bouzaïdi@yahoo.fr](mailto:khaled.bouzaïdi@yahoo.fr) (K. Bouzaïdi).

<http://dx.doi.org/10.1016/j.diii.2014.04.013>

2211-5684/© 2014 Éditions françaises de radiologie. Published by Elsevier Masson SAS. All rights reserved.



**Figure 2.** Transverse (a) and sagittal (b) CT images of the pelvis.

### What is your diagnosis?

From the observation, what, from among the following, would your diagnosis be:

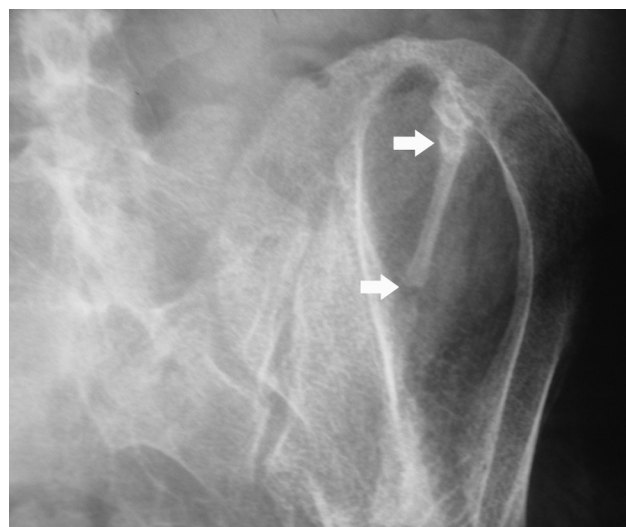
- osteochondroma;
- pelvic digit;
- myositis ossificans;
- Fong's disease;
- anterior superior iliac spine avulsion fracture.

### Diagnosis

Pelvic digit.

### Results

Plain radiograph of the pelvis shows the presence of a bony finger-like protuberance arising from the left iliac wing extending inferiorly and laterally, several centimeters in length (Fig. 3). CT-scan confirms the X-ray findings. It shows a bony structure with a clear corticomedullary differentiation, located anterior to the left iliac wing and extending inferiorly and laterally toward the abdominal wall. There is one pseudoarticulation at the site of origin in the pelvis (Fig. 4) and three pseudoarticulations in the body of the ossification (Fig. 5). This appearance is consistent with a pelvic digit.



**Figure 3.** Lateral detailed radiographic of the pelvis showing the finger-like bone articulating with the anterior superior angle of the left iliac wing and extending inferiorly and laterally toward the abdominal wall.

### Discussion

Pelvic digit is a rare anatomic anomaly in which bone develops in soft tissues adjacent to normal skeletal bone [1]. Its origin is still unknown. The suggested theory of origin

Download English Version:

<https://daneshyari.com/en/article/2733771>

Download Persian Version:

<https://daneshyari.com/article/2733771>

[Daneshyari.com](https://daneshyari.com)