

The Effect of a Resin-based Sealer Cement on Micropunch Shear Strength of Dentin

Angsana Jainaen, DDS, Cert (Endodontology), PhD, Joseph E.A. Palamara, PhD, and Harold H. Messer, MDSc, PhD

Abstract

Dentinal tubules occupy a substantial proportion of total dentin volume, especially of inner dentin. Resin-based sealer cements are known to penetrate deeply into dentinal tubules, but their ability to influence root strength is controversial. In this study, the contribution of dentinal tubules to shear strength and the influence of a resin-based sealer on shear strength were evaluated. Coronal 100- μ m sections of 12 single-canal premolar teeth were tested in different locations (buccal and proximal) and tubule directions (parallel and perpendicular) using the micropunch shear test (MPSS). Tests were also conducted by using 10 two-canal premolars, with one untreated canal and the other obturated using epoxy resin-based sealer (plus gutta-percha). No difference in MPSS was found because of location or tubule orientation ($p > 0.05$). Outer dentin had a higher MPSS than middle and inner dentin ($p < 0.001$). Tubule infiltration by epoxy resin did not increase MPSS. (*J Endod* 2008;34:1215–1218)

Key Words

Dentinal tubules, punch shear strength, resin infiltration, sealer cement

From the School of Dental Science, The University of Melbourne, Melbourne, Victoria, Australia.

Address requests for reprints to Dr Harold H. Messer, School of Dental Science, The University of Melbourne, 720 Swanston Street, Melbourne, Victoria, Australia 3010. E-mail address: hhm@unimelb.edu.au.

0099-2399/\$0 - see front matter

Copyright © 2008 American Association of Endodontists. doi:10.1016/j.joen.2008.07.003

Dentinal tubules are the most characteristic structural feature of dentin. The number of dentinal tubules varies in different locations, from approximately 20,000/mm² near the dentinoenamel junction (DEJ), increasing to over 45,000/mm² near the pulp in coronal dentin. The diameter of each dentinal tubule is approximately 0.9 μ m at the DEJ, increasing to about 2.5 μ m at the pulpal surface (1). The percentage of dentin occupied by dentinal tubules varies from less than 1% in the outer dentin to more than 22% near the pulp (2). Despite their distinctive appearance, the effect of tubule density, diameter, and orientation on physical properties of dentin remains controversial. Both ultimate tensile strength and work of fracture are dependent on tubule orientation (3–5), with higher values for fracture parallel to tubule direction. Punch shear strength is greater in outer versus inner dentin (6, 7), but the effect of tubule orientation has not been previously reported. Root dentin has a higher tensile strength than coronal dentin (8, 9), and the difference has been attributed to the lower number of dentinal tubules in root dentin.

Several recent studies have documented the extensive penetration of resin-based sealers into dentinal tubules in root canal-treated teeth (10–13). The resin penetrates not only the main tubules but also tubule branches (11). Several studies have also claimed that the use of a resin-based root-filling material (Resilon; Pentron, Wallingford, CT) reinforced roots against fracture (14–16), although other studies have not confirmed this finding (17–19). Bond strength of resin-based sealers to dentin has also been variable (20–22). Extensive resin infiltration of tubules has the potential to increase fracture strength of dentin. Thus, the aim of this study was to investigate the role of tubules in biomechanical properties of dentin, as measured by micropunch shear strength (MPSS), and to evaluate the effect of resin infiltration on strength. The null hypotheses tested were as follows: (1) there is no difference in MPSS of coronal root dentin in relation to location (buccal and proximal), tubule orientation (perpendicular and parallel), and area (inner, middle, and outer dentin), and (2) there is no difference in MPSS of resin-filled root dentin and sound dentin.

Materials and Methods

This study was conducted using maxillary and mandibular premolars with either a single root (12 teeth) or two roots (10 teeth), extracted for orthodontic reasons. Teeth were stored in 1% chloramine T (Sigma-Aldrich, St Louis, MO) at 4°C until use. The protocol was approved by the Human Research Ethics Committee, University of Melbourne, Australia. Teeth were thoroughly cleaned, and the crown of each tooth was resected 2 mm apical to the cementoenamel junction. All samples were then prepared from the coronal third of the root.

Sample Preparation

Transverse Sections

A sample cut in transverse section approximately 200 μ m thick was lapped and polished with a series of silicon carbide papers (1,200, 2,400, and 4,000 grit) until the thickness was 100 μ m as measured with a digital caliper to the nearest 0.001 mm. Care was taken to prevent desiccation of the dentin, and tooth slices were stored moist at 4°C until the punch shear test. These samples allowed testing perpendicular to tubule orientation.

Longitudinal Samples

The remaining portion of the coronal third of the root was used for longitudinal sections, which were tested in a direction parallel to tubule orientation. The sample was attached to a mounting stub and sliced into buccal, lingual, and proximal samples. Each sample was then sequentially cut to yield three samples: inner, middle, and outer dentin. All samples were lapped to a thickness of 100 μm with silicon carbide papers as described earlier. Before testing, all sections were examined under a light microscope to locate regions in which the dentinal tubules were seen precisely in a cross or longitudinal section.

Punch Shear Testing

A micropunch shear apparatus was modified from the device previously described (23) with a punch diameter of 0.3 mm (Fig. 1). The dentin slice was positioned over the central hole of the lower die, and the upper die was placed over the lower die and secured so that the dentin slice was constrained. All tests were randomized in sequence among inner dentin (approximately 0.5 mm from the canal space), middle dentin, and outer dentin (approximately 0.5 mm from the root surface). The punch apparatus was then mounted on a universal testing machine (Instron model 5544; Instron Corp, Canton, MA). The load was applied to the punch at a constant crosshead speed of 0.1 mm/min until a hole was punched, as determined from the drop in force. The MPSS was calculated by the following equation: shear strength (MPa) = force/ $\pi \times \text{diameter} \times \text{thickness}$. Force is in newtons, and punch diameter and specimen thickness are in millimetres. Data were normally distributed and were analyzed by general linear model analysis of variance with location (buccal and proximal), orientation of tubules (parallel and perpendicular), and area tested (inner, middle, and outer dentin) as independent variables. Post hoc pair-wise comparisons were conducted by using Tukey multiple comparisons. For each outcome, statistical significance was set at $p < 0.05$.

Resin-infiltrated versus Sound Dentin

This part of the study investigated the effect on MPSS in locations in which sealer penetration was confirmed by incorporating Sudan black into an epoxy resin-based sealer cement (AH Plus; Dentsply DeTrey, Konstanz, Germany) (13). Ten premolars with two separate canals were used. For each tooth, buccal and palatal canals were randomly allocated

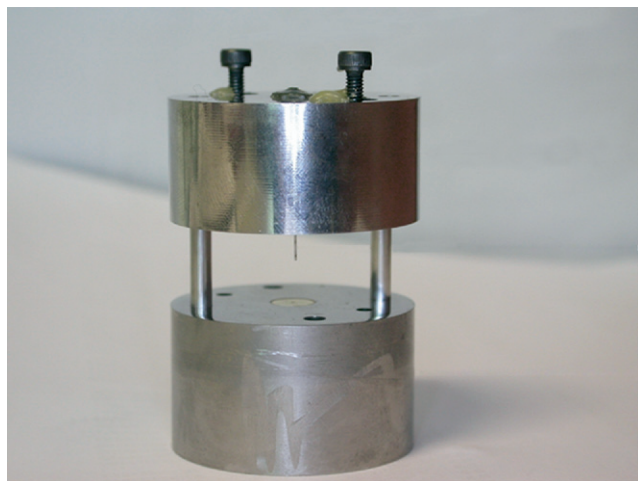


Figure 1. The micro-punch apparatus with 300 μm diameter punch. After the dentin slice was positioned over the bush of the lower die, the upper die was placed over the lower die and secured with screws so that the dentin slice was constrained.

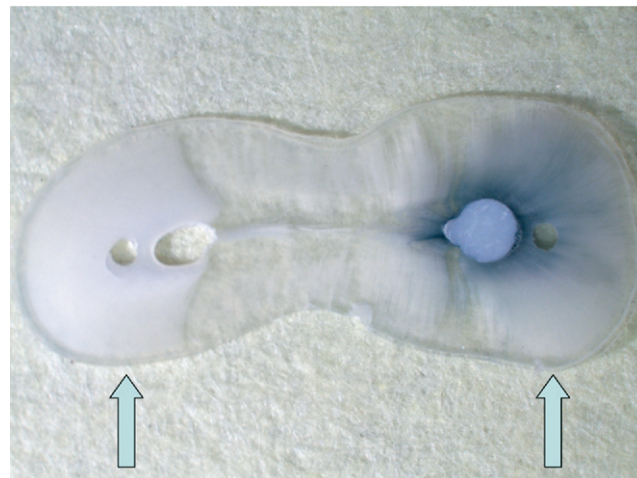


Figure 2. The right hand side shows the canal filled with gutta percha and AH Plus™ stained with Sudan black. The sealer extensively infiltrated the inner third of dentin where the punch shear strength was measured. A comparable area was tested in the canal with sound dentin on the left hand side. The mean MPSS of dentin filled with AH Plus™ was slightly higher than sound dentin, with no statistically significant difference ($p = 0.08$).

(using a random numbers table) to either no treatment (sound dentin) or prepared canal with a 0.04 taper ProFile (ProFile; Dentsply Maillefer, Johnson City, TN) to master apical rotary size #40, plus root filling with main cone plus AH Plus with Sudan black. Sections from the coronal third of each root were lapped in series with silicon carbide paper until the thickness was approximately 100 μm , as described earlier. An area of inner dentin in which sealer containing Sudan black was seen heavily infiltrating tubules was tested for MPSS, and a comparable area was tested in the canal with sound dentin (Fig. 2). The effect of epoxy resin sealer on MPSS was analyzed by using a paired t test.

Results

The mean MPSS of coronal root dentin in two locations (buccal and proximal), in two orientations (parallel and perpendicular), and in three areas tested (inner, middle, and outer) are shown in Table 1. The mean value of MPSS varied from 73.6 ± 18.3 to 117.5 ± 18.8 MPa. There were no statistically significant differences in MPSS between the two locations (buccal and proximal) ($p = 0.28$) or when comparing the two orientations with respect to dentinal tubules ($p = 0.6$). However, the mean MPSS of outer dentin was significantly higher than that of the middle and inner dentin ($p < 0.001$), and the middle dentin had a significantly higher MPSS than the inner dentin ($p < 0.01$) (Table 1).

The test was conducted for roots filled using epoxy resin-based sealer, with Sudan black as an indicator of areas in which tubules were densely filled with resin (Fig. 2). No difference in MPSS of inner dentin in which color could be seen was found compared with sound dentin from the same tooth in a comparable location (root-filled = 74.5 ± 10.8 MPa, sound dentin = 67.8 ± 11.5 MPa, $p = 0.08$).

Discussion

Using the punch shear test to show dentin strength was first reported by Roydhouse in 1970 (24). The shear strength of dentin varied from 68.6 MPa to 147 MPa depending on the site within the tooth, tooth type, and the direction of the punch in relation to the long axis of the tooth. Smith and Cooper (7) used a micropunch 100, 200, or 300 μm in diameter and reported that the value near the DEJ was higher than near the pulp. Dentin from root-filled teeth has been variously reported

Download English Version:

<https://daneshyari.com/en/article/3149709>

Download Persian Version:

<https://daneshyari.com/article/3149709>

[Daneshyari.com](https://daneshyari.com)