
Twin melanomas

Jennifer Cautela, MD,^a Elvira Moscarella, MD,^b Aimilios Lallas, MD,^b Caterina Longo, MD,^b
Simonetta Piana, MD,^c and Giuseppe Argenziano, MD^d
Modena, Reggio Emilia, and Naples, Italy

Key words: dermoscopy; melanoma; multiple primary melanoma.

CLINICAL PRESENTATION

An 80-year-old man with extensive sun-damaged skin presented with 2 flat, asymmetric pigmented lesions on his right shoulder of unknown history. Clinically, the lesions showed similar appearance, with a pigmented peripheral rim and a central hypopigmented area (Fig 1).



Fig 1. Clinical appearance of flat pigmented macules arising on the shoulder of a 80-year-old man.

DERMOSCOPIC APPEARANCE

Both lesions (case 1, Fig 2, A and case 2, Fig 2, B) displayed atypical pigment network at the periphery and a central white scarlike area compatible with a regression area.

From the Department of Dermatology, University of Modena and Reggio Emilia,^a Dermatology and Skin Cancer Unit^b and Pathology Unit,^c Arcispedale S.Maria Nuova, IRCCS, and Department of Dermatology, Second University of Naples.^d

Funding sources: None.

Conflicts of interest: None declared.

Correspondence to: Giuseppe Argenziano, MD, Dermatology Unit, Second University of Naples, Via G. Fiorelli 5, 80121 Naples, Italy. E-mail: g.argenziano@gmail.com.

J Am Acad Dermatol 2015;73:e165-8.

0190-9622/\$36.00

© 2015 by the American Academy of Dermatology, Inc.

<http://dx.doi.org/10.1016/j.jaad.2015.07.020>

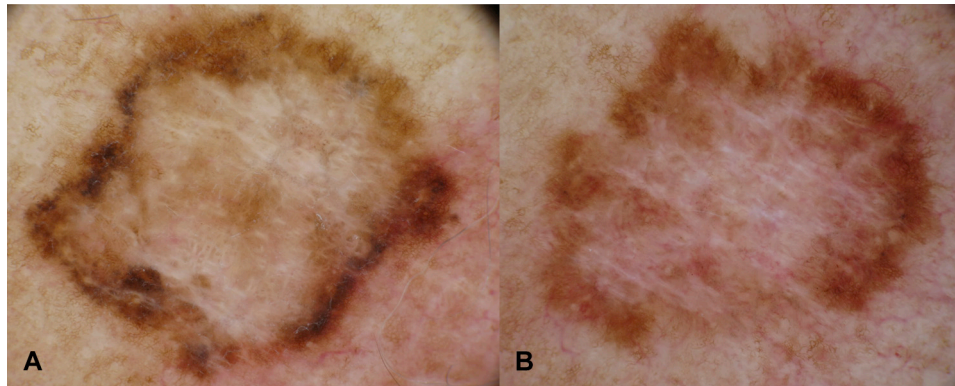


Fig 2. Dermoscopy image. In both cases (**A**, **B**) atypical pigment network and central white scarlike area were detected.

CONFOCAL MICROSCOPY

In both lesions, numerous pagetoid cells were visible at the superficial epidermal layers, and junctional thickening was detected at the dermal-epidermal junction, with more marked atypia in case 1 (Fig 3, *A* and *B*).

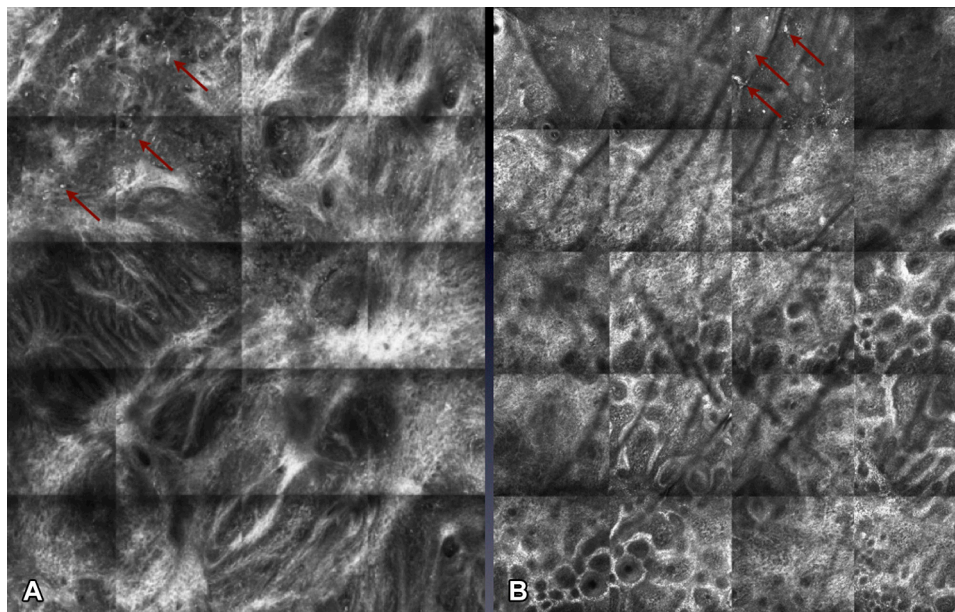


Fig 3. Reflectance confocal microscopy image. **A**, Mosaic image (2×2.5 mm) at the level of the dermal-epidermal junction, shows a markedly asymmetric lesion, displaying junctional thickening and atypical roundish and dendritic cells (*red arrows*). **B**, Mosaic image (2×2.5) at the level of the dermal-epidermal junction, shows junctional thickening. The upper part of mosaic is taken at the level of the spinous layer and shows the presence of multiple pagetoid cells (*red arrows*).

Download English Version:

<https://daneshyari.com/en/article/3204620>

Download Persian Version:

<https://daneshyari.com/article/3204620>

[Daneshyari.com](https://daneshyari.com)