



Contents lists available at ScienceDirect

International Journal of Surgery Case Reports

journal homepage: www.casereports.com

Conservative treatment for isolated dissection of the superior mesenteric artery: Report of two cases



Hitoshi Funahashi*, Naoya Shinagawa, Takaaki Saitoh, Yoshihide Takeda, Akihiko Iwai

Division of Surgery, JA Mie Komono Public Welfare Hospital, 75 Fukumura, Komono-cho, Mie 5101234, Japan

ARTICLE INFO

Article history:

Received 27 April 2016

Received in revised form 1 July 2016

Accepted 5 July 2016

Available online 9 July 2016

Keywords:

Isolated SMA dissection case reports

Conservative therapy

ABSTRACT

INTRODUCTION: Isolated spontaneous dissection of the superior mesenteric artery (SMA) is rare and a treatment strategy has not been established yet. In this paper, we present our experience with two cases and review the literature.

PRESENTATION OF CASE: Both cases were treated conservatively as they did not show signs of bowel ischemia. They were symptom free with no evidence of disease progression after a median follow-up of 3.5 years.

DISCUSSION: There are three methods for the treatment of isolated SMA dissection; observation with medical therapy, endovascular surgery, and open surgery. Most patients with isolated SMA dissection can be treated with observation alone. Although the indications for surgery are still controversial, patients with bowel ischemia should undergo invasive treatment in the form of either endovascular or open surgery.

CONCLUSION: We recommend observation with medical therapy as the first choice for isolated SMA dissection. However, long term follow-up is necessary as the extent of the dissection may change over time.

© 2016 The Author(s). Published by Elsevier Ltd on behalf of IJS Publishing Group Ltd. This is an open access article under the CC BY-NC-ND license (<http://creativecommons.org/licenses/by-nc-nd/4.0/>).

1. Introduction

Spontaneous isolated dissection of the superior mesenteric artery (SMA) is a rare condition and potentially fatal. The first case report of isolated SMA dissection was in 1947 by Bauersfeld et al. [1]. Although the number of reported cases has increased with the development of diagnostic imaging techniques, such as multidetector computed tomography (MDCT) and CT angiography (CTA), the etiology and natural history have not cleared yet. Moreover, three different treatment strategies for SMA dissection are reported: observation with medical therapy, endovascular therapy, and surgery. There is no consensus as to one optimal therapy.

2. Presentation of case

2.1. Case 1

A 58-year-old man presented to the emergency department in a local hospital with severe sudden onset abdominal pain. He had no

medical history. Ileus was suspected and he was treated with bowel rest. After four days, he was transferred to our hospital with ongoing abdominal pain. On admission, physical examination revealed mild epigastric tenderness without any signs of peritonitis. Laboratory tests showed hepatic dysfunction with a slightly elevated serum bilirubin as well as leukocytosis. Plain x-ray of the abdomen showed nivo (Fig. 1A). Contrast-enhanced CT showed isolated dissection of the SMA. The dissection began from just after the orifice of the SMA and separated the SMA into two distinct lumens (Fig. 1B). Although the false lumen was completely obstructed and compressed the true lumen, there were no suggestive signs of bowel ischemia, such as bowel thickening, abnormal contrast enhancement, and/or ascites. Therefore, we chose conservative treatment with blood pressure control, fasting, vasodilators, and anticoagulation. His abdominal pain completely disappeared on day 2 and oral intake was resumed without worsening of his symptoms. He was discharged and was symptom-free two years after discharge with no recurrent symptoms or disease progression (Fig. 1C).

2.2. Case 2

A 67-year-old man presented to the urology department with hematuria. He had no abdominal symptoms. Contrast-enhanced CT revealed an isolated dissection of the SMA and he was referred to our department. There were no signs of bowel ischemia and the dissection was classified as a type I dissection (patent type with an entry and re-entry) by Sakamoto's classification (Fig. 2A). Moreover, there were no signs of the development of an aneurysm. His

Abbreviations: SMA, superior mesenteric artery; CT, computed tomography; MDCT, multidetector computed tomography; CTA, computed tomographic angiography; ULP, ulcer-like projection; PGE1, Prostaglandin E1.

* Corresponding author.

E-mail addresses: funa84@aol.com (H. Funahashi), n-shinagawa@khh.miekosei.or.jp (N. Shinagawa), t-saitoh@khh.miekosei.or.jp (T. Saitoh), y-takeda@khh.miekosei.or.jp (Y. Takeda), a-iwai@khh.miekosei.or.jp (A. Iwai).

<http://dx.doi.org/10.1016/j.ijscr.2016.07.003>

2210-2612/© 2016 The Author(s). Published by Elsevier Ltd on behalf of IJS Publishing Group Ltd. This is an open access article under the CC BY-NC-ND license (<http://creativecommons.org/licenses/by-nc-nd/4.0/>).

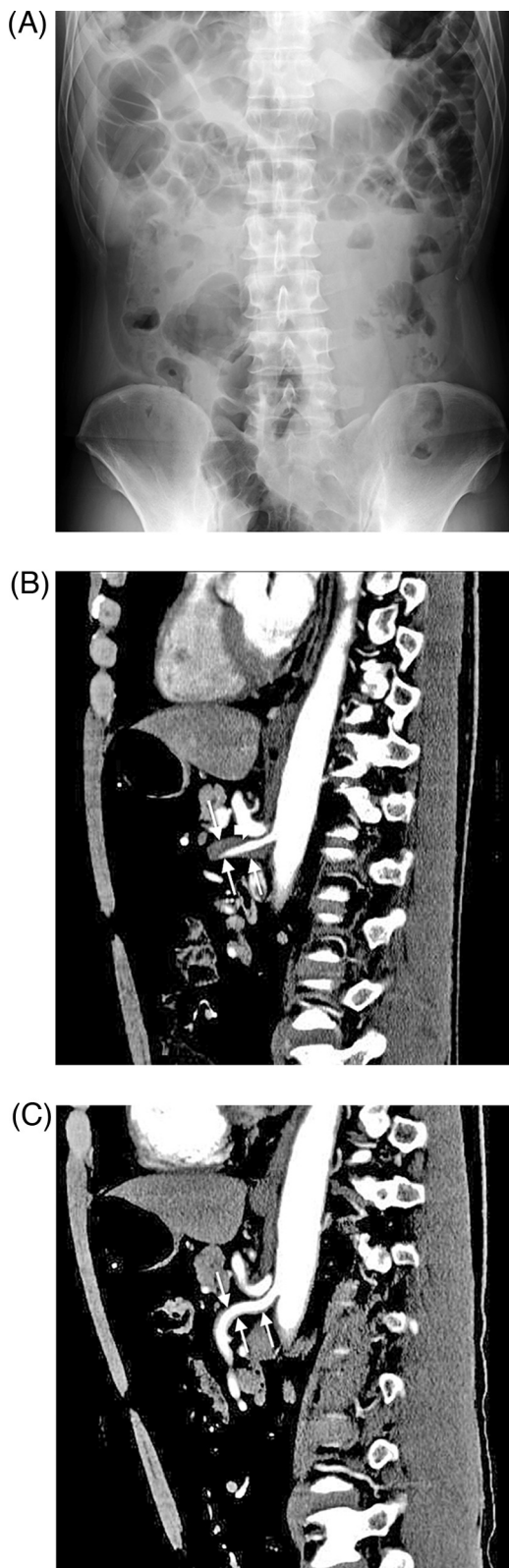


Fig. 1. Plain x-ray film of the abdomen showed intestinal gas and niveau (A). Abdominal CT scan showed isolated superior mesenteric artery dissection with true and false lumen (white arrow). The dissection which began from just after the orifice of the SMA and extended to the distal portion. The narrow true lumen was compressed by the thrombosed false lumen (B). After 15 months from the onset, false lumen disappeared (C).

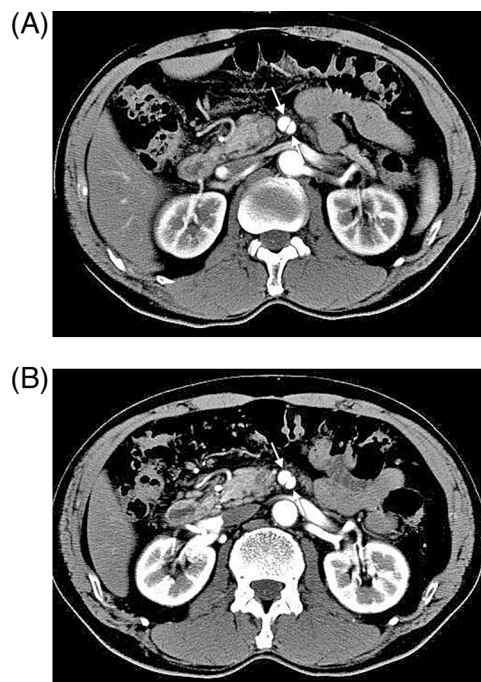


Fig. 2. Abdominal CT scan showed isolated superior mesenteric artery dissection with true and false lumen, which had patency each other (white arrow) (A). After 18 months from the onset, the dissection did not change without development and/or dilation. In addition, it did not show the formation of aneurysm (B).

physical examination and laboratory data were unremarkable. We decided to treat him conservatively with blood pressure control. The patient was symptom-free for five years and there was no progression of dissection on follow-up CT (Fig. 2B).

3. Discussion

The etiology of isolated SMA dissection has not been elucidated yet, but atherosclerosis, cystic medial necrosis, and fibromuscular dysplasia are thought to be implicated. In addition, untreated hypertension may also have a role [2]. Solis et al. hypothesized that the dissection is caused by stress on the anterior wall of the artery at the inferior edge of the pancreas, where the transition from the fixed to the mobile part of the SMA occurs [3]. In our first case, the dissection began from just after the orifice of the SMA; this is thus not consistent with the hypothesis of Solis et al. On the other hand, the location of the dissection in the second case was in accordance with this hypothesis. Case 1 suggested that the dissection could extend not only distally but also proximally.

The clinical course of this disease is also unclear. Most patients present with acute abdominal pain, which might be due to the dissection itself and/or intestinal ischemia. Other possible symptoms include nausea, vomiting, melena, and abdominal distention [4]. Laboratory tests and abdominal radiography are usually unremarkable. Therefore, patients are often misdiagnosed with other disease processes including gastritis or colitis. As in case 1, intestinal paralysis caused by intestinal ischemia might show niveau on plain x-ray. Interestingly, case 2 was asymptomatic and diagnosed incidentally. As the result that isolated SMA dissection can present in a variety of ways.

Accurate diagnosis has become possible as a result of the development of imaging techniques such as MDCT and CTA [2,5]. Sakamoto et al. have categorized the morphology of isolated SMA dissection into four types based on contrast-enhanced CT images: type I, patent type with an entry and re-entry; type II, “cul-de-sac” type without re-entry; type III, with a thrombosed false lumen

Download English Version:

<https://daneshyari.com/en/article/4288171>

Download Persian Version:

<https://daneshyari.com/article/4288171>

[Daneshyari.com](https://daneshyari.com)