



Contents lists available at ScienceDirect

International Journal of Surgery Case Reports

journal homepage: www.casereports.com

Adult cystic lymphangioma in the inner quadrant of the breast—Rare location for a rare disease: A case report

Eve Rusdianto^{a,*}, Mary Murray^a, Jennifer Davis^b, Anne Caveny^c

^a Department of Surgery, Akron General Medical Center, 1 Akron General Avenue, Akron, OH 44307, USA

^b Department of Radiology, Akron General Medical Center, 1 Akron General Avenue, Akron, OH 44307, USA

^c Department of Pathology, Akron General Medical Center, 1 Akron General Avenue, Akron, OH 44307, USA

ARTICLE INFO

Article history:

Received 27 August 2015

Received in revised form 13 January 2016

Accepted 16 January 2016

Available online 22 January 2016

Keywords:

Breast lymphangioma

Cystic lymphangioma

Adult lymphangioma

Breast mass

Breast cystic lesion

ABSTRACT

INTRODUCTION: Adult cystic lymphangioma of the breast is extremely rare, especially in the breast's upper, inner quadrant. Review of literature is discussed, including etiology, differential diagnosis, workup, and treatment of the disease.

PRESENTATION OF CASE: A 20-year-old female presented with a recurrent left breast cyst. Previous aspirations showed no malignancy. Ultrasonography showed a lobulated anechoic lesion with internal debris and thin septations. The patient then underwent a lumpectomy of the left breast cyst, and pathology showed lymphangioma.

DISCUSSION: Cystic lymphangiomas of the breast are benign lymphatic malformations. Consistent with the main drainage pattern of the breast, cystic lymphangiomas are typically located in the upper, outer quadrant, tail of Spence, and subareolar area. Radiologic evaluation may include ultrasound, mammogram, and MRI. FNA cytology and core biopsy assist in the diagnosis of breast lymphangioma. Although different treatment options exist, complete surgical excision remains the most effective treatment modality for adult cystic lymphangioma of the breast.

CONCLUSION: Breast cystic lymphangioma is an extremely rare condition, especially in the upper, inner quadrant of the breast. The patient had multiple recurrences of the lesion after fine needle aspirations. Proper index of suspicion, prompt diagnosis, and definitive treatment is necessary to prevent recurrence and complications.

© 2016 The Authors. Published by Elsevier Ltd. on behalf of IJS Publishing Group Ltd. This is an open access article under the CC BY-NC-ND license (<http://creativecommons.org/licenses/by-nc-nd/4.0/>).

1. Introduction

Adult cystic lymphangioma of the breast is an extremely rare condition with less than 20 cases reported worldwide in the last 40 years. To our knowledge, only one case has been described in the U.S. [1–3]. Cystic lymphangiomas are benign lymphatic malformations [4], typically found in infants [5,6]. Diagnosis of cystic lymphangiomas is uncommon in the adult population, as greater than 90% of them are diagnosed prior to 2 years of age [2].

The most common location of breast lymphangiomas, as described in the limited number of case reports, is in the subareolar and the upper, outer quadrant of the breast. Most likely, this represents the governing anatomic principle: the majority of lymphatic drainage from the breast is to the ipsilateral axilla [3,7]. To our knowledge, an isolated location of breast lymphangioma in the upper, inner quadrant of the breast has not been described

before. This case report involves the discovery of a rare cystic lymphangioma of the breast in a patient presenting with a history of multiple fine needle aspirations for a cyst located in the upper, inner quadrant of the breast. This work has been reported in line with the CARE criteria [8].

2. Case report

A 20-year-old female was referred to our surgery clinic with a left breast cyst that recurred despite multiple fine needle aspirations by her primary care physician. She had an obvious bulging deformity and mastodynia due to the mass effect. There were no other complaints or systemic symptoms, including fever, chills, or weight loss. The fluid from one of the aspirations was sent for cytological evaluation and was unremarkable, showing no atypia or other discerning neoplastic features.

Clinical examination found a cyst greater than six centimeters located in the upper, inner quadrant of the left breast at the 10 o'clock position, adjacent to the sternal border. There were no skin changes, including erythema, cellulitis, nipple retraction, or breast tenderness. Initial clinical impression was that the lesion

* Corresponding author.

E-mail addresses: eveline.rusdianto@akrongeneral.org (E. Rusdianto),

Mary.murray@akrongeneral.org (M. Murray), Jennifer.Davis@akrongeneral.org (J. Davis), E.AnneCaveny@akrongeneral.org (A. Caveny).

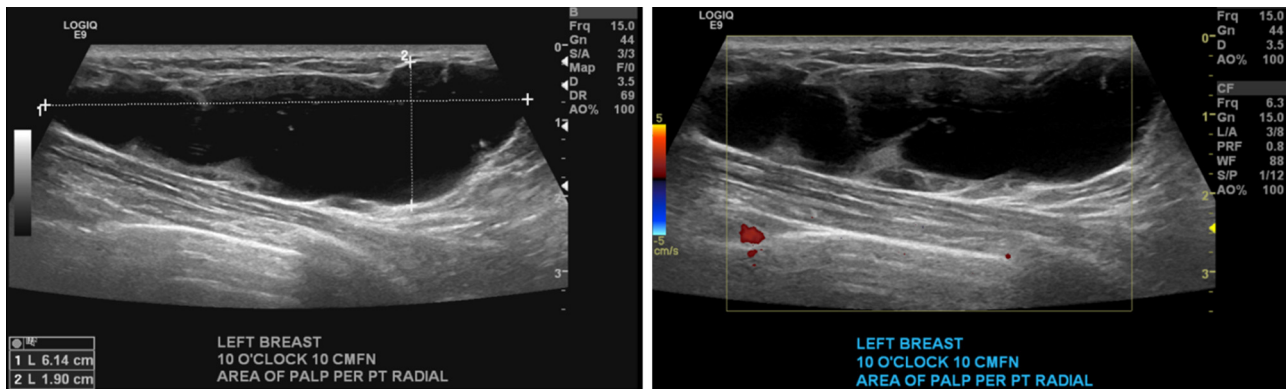


Fig. 1. Lobulated cyst with a septated internal wall in the left breast at a 10 o'clock position and middle depth 10 cm from the nipple measuring $6 \times 6.1 \times 1.9$ cm. This lobulated cyst is anechoic with posterior acoustic enhancement.



Fig. 2. Gross examination of the surgical specimen measuring $3 \times 1.5 \times 1.5$ cm showed a poorly demarcated, multicystic lesion containing clear yellowish fluid.

represented a cyst, both on clinical examination as well as radiologic studies.

Ultrasound at the palpable area of concern found a 6.1 cm lobulated anechoic lesion with internal debris and several thin partial septations. On color Doppler, there was no flow in the cystic lesion or in the partial septations. Posterior acoustic enhancement was present (Fig. 1).

Lumpectomy was recommended due to the recurrent disease process and the patient's concern regarding the disfiguring bulge and associated pain. The patient underwent lumpectomy of the left breast cyst with intraoperative ultrasound-guided needle localization. A circumareolar incision in the upper aspect was made using an oncoplastic approach, and a tunnel was made into the upper, inner quadrant. The cyst was intimately associated with the pectoralis muscle at the 10 o'clock position, 10 cm from the nipple. The needle localization wire was then brought into the wound and the cyst was excised in its entirety (Fig. 2).

Pathologic findings and diagnosis included no evidence of a cystic wall on gross inspection and microscopic features supporting diagnosis of lymphangioma (Fig. 3). The patient tolerated the procedure well and was discharged the same day. She was seen in the clinic three weeks after surgery without any signs of postoperative complications.

3. Discussions

Lymphangiomas are dilated lymphatics with endothelial linings that may be caused by congenital weakness of the wall, proliferation of lymphatic vessels, and blockage of the lymphatic channels [9]. It has been suggested that lymphangiomas are caused by failure of the sequestered lymphatic tissue to communicate with the normal lymphatic system during development [4]. Finally, an instigating event, e.g., trauma or infection, can delay proliferation of resting lymphoid cells, resulting in lymphangioma formation in the adult patient [2]. Lymphangiomas are most commonly benign, slow-growing lesions that do not transform into malignancy [4], although malignant degeneration into squamous cell carcinoma in longstanding *lymphangioma circumscriptum* has been described [1,5,10].

There are several subtypes of lymphangiomas that can be clearly distinguished by their pathologic features. *Simple lymphangiomas* are composed of small capillary, thin-walled vessels. *Lymphangioma circumscriptum* (capillary lymphangioma) is a cutaneous lymphangioma consisting of small lymphatic channels. *Cystic lymphangioma* is characterized as spaces lined by endothelial cells, filled with clear lymph fluid. *Cavernous lymphangiomas* are long standing cavernous lesions with massively dilated cystic spaces lined by endothelial cells separated by connective tissue containing lymphoid aggregates [1,2,9].

Cystic lymphangioma is an uncommon congenital lymphatic malformation typically located in the head, neck, and axilla [1], and it is typically diagnosed before 2 years of age [5,6]. Breast lymphangiomas are typically located in the upper, outer quadrant, the tail of Spence, and subareolar area [9]. This is related to the main drainage pattern of the breast lymphatics toward the tail of Spence and the axilla [11].

Lymphatic drainage of breast originates from breast lobules and flow into the Sappey's plexus, which is a network of lymphatics within the areola of the nipple. There are three lymphatic drainage pathways from the Sappey's plexus. The axillary or lateral pathway is on the inferior edge of the pectoralis major and goes to the pectoral group of axillary nodes. The internal mammary pathway passes through the pectoralis major to the contralateral breast, and the retromammary pathway originates from the posterior portion of the breast [12]. The axillary lymph nodes receive more than 75% of the lymph drained from the breast, especially from the lateral quadrants. The remainder of lymph drains to either the parasternal nodes or the opposite breast (medial quadrants) or the inferior phrenic nodes (lower quadrants) [13]. Lymphangioma in the upper, inner quadrant of the breast, as seen in the presented patient, is extremely unusual.

Download English Version:

<https://daneshyari.com/en/article/4288571>

Download Persian Version:

<https://daneshyari.com/article/4288571>

[Daneshyari.com](https://daneshyari.com)