



# Intradiploic epidermoid cyst with intracranial hypertension syndrome: Report of two cases and literature review

J.C. Moreira-Holguin\*, R. Medélez-Borbonio, E. Quintero-Lopez, U. García-González, J.L. Gómez-Amador

Neurosurgery Department, National Institute of Neurology and Neurosurgery "Manuel Velasco Suárez", Mexico City, Mexico

## ARTICLE INFO

### Article history:

Received 16 March 2015  
Received in revised form  
17 September 2015  
Accepted 17 September 2015  
Available online 25 September 2015

### Keywords:

Squamous  
Intradiploic  
Extradural cyst  
Intradiploic epidermoid cyst  
Hypertension syndrome

## ABSTRACT

**INTRODUCTION:** Intradiploic epidermoid intracranial cysts (IEIC) derive from ectodermal cells and are covered with stratified squamous epithelium. They are extremely rare, and most common locations are in the occipital, frontal and parietal bones. They have a very slow growth and can be asymptomatic until becoming evident by the deformation produced. The treatment is based on the removal of the lesion, and subsequent histopathological confirmation.

**PRESENTATION OF CASE:** Two cases are reported, with intracranial hypertension syndrome, which is very uncommon because of the slow growth of this type of pathology; however, decompensations occurring in the space-occupying lesions at intracranial level explain this type of clinical presentation.

**DISCUSSION:** The most common presentation of intracranial intradiploic epidermoid cysts (IEIC) is asymptomatic, which is made evident by the prominence at the level of the soft tissues and then presenting less frequently local pain and cephalgia; rarely the size of the lesion can cause focal neurological signs.

**CONCLUSION:** These benign lesions, although they are of low incidence, are seen very rarely in intradiploic locations and above all, of significant size, may produce significant mass effect in patients, which was initially tolerated because of its slow growth, however, they may become decompensate and cause intracranial hypertension syndrome.

© 2015 The Authors. Published by Elsevier Ltd. on behalf of Surgical Associates Ltd. This is an open access article under the CC BY-NC-ND license (<http://creativecommons.org/licenses/by-nc-nd/4.0/>).

## 1. Introduction

Epidermoid cysts are benign tumors that originate in the spine or intracranially [1]. Love and Kernohan in 1936, referred to epidermoid cysts as congenital epithelial tumors [2]. They originate from granulation alterations producing a defect in the closure of the neural tube during the third to sixth week of gestation, at level surface of the ectoderm [3].

At intracranial level represents 0.2–1.8% of all tumor lesions; they can be located intra- or extradurally [4,5]. Intradural compose 75% of epidermoid cysts and -IEIC-25% are extradural in the diploic space—IEIC [6,7].

IEICs are very rare; as the name indicates are found among the two tables of the skull bones, having a slow growth [8,9]. The first IEIC was reported by Müller in 1838, Cushing in 1922, also performed a description of an IEIC [12,10] and the first case of giant IEIC in the posterior cranial fossa was reported by Rengachary [11].

Two cases are reported, that in a particular way, go to the emergency room because they display intracranial hypertension syndrome, which is very intriguing because of the slow growth of this type of pathology; however, decompensation occurring in the pathophysiology of space-occupying lesions at intracranial level explain this type of clinical presentation.

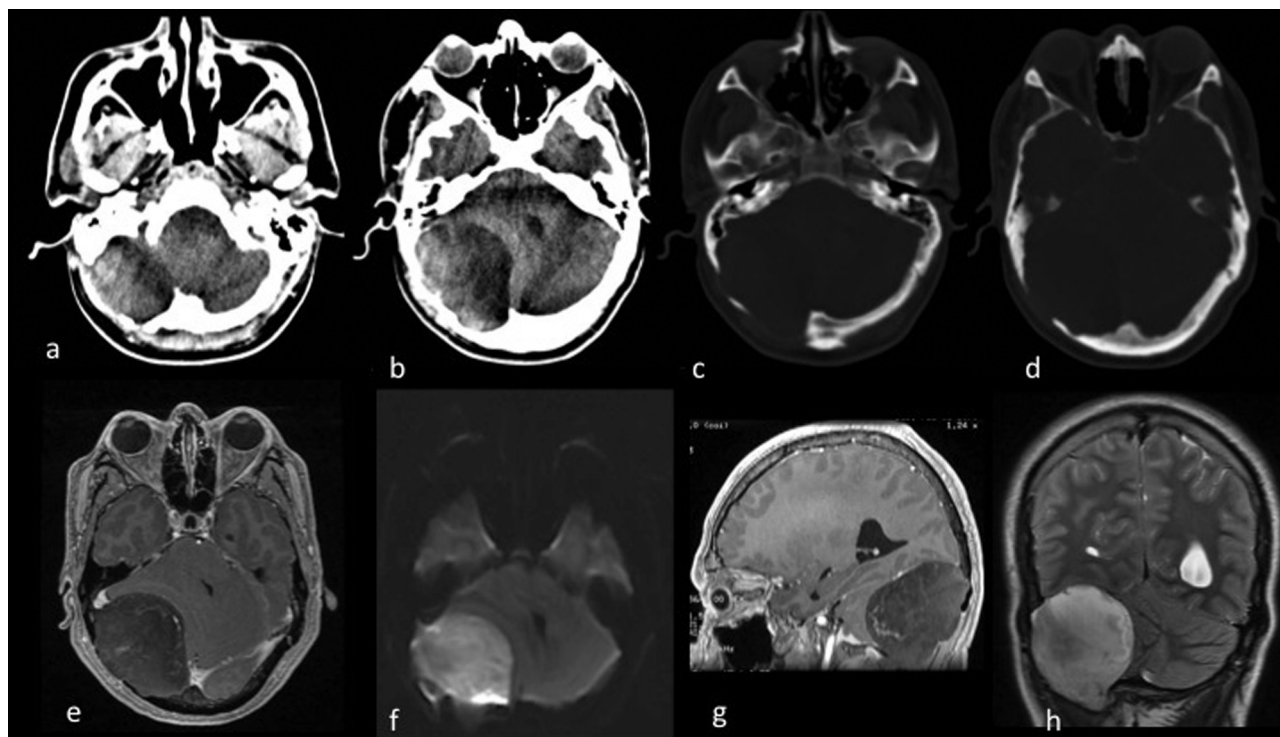
## 2. Presentation of cases

### 2.1. Case 1

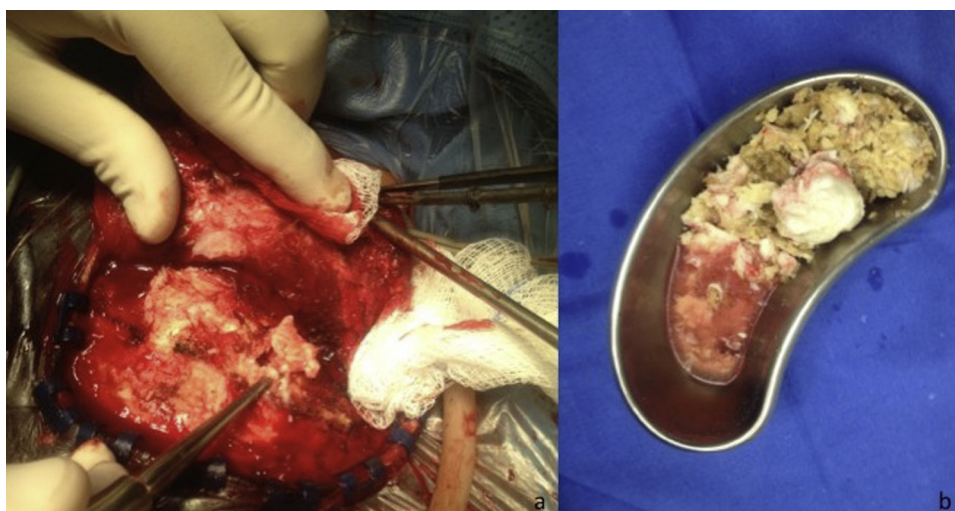
Male, 42, with a history of smoking and drug use—methamphetamines. Presents occipital headache with 3 months evolution that radiates to the frontal region, pulsatile, which increases with Valsalva maneuvers with a frequency initially described as sporadic until evolving to daily, in the week prior to admission; accompanied by vomiting, on the day of admission, with intensified headache intensity. On physical examination, the patient exhibits intracranial hypertension symptoms (papilledema) without rostrocaudal deterioration, which is accompanied by indifferent lateropulsion; in imaging studies, extra-axial (Fig. 1) lesion is observed. Study protocol is completed, and resection of the lesion is performed by means of a right lateral suboccipital approach. Among the findings an important erosion of

\* Corresponding author at: Av. Insurgentes Sur No. 3877, Col. La Fama, Del. Tlalpan. Tel.: +52 56063822. Distrito Federal CP. 14269.

E-mail address: [jcmoreiraholguin@neurocirugia-innn.com](mailto:jcmoreiraholguin@neurocirugia-innn.com) (J.C. Moreira-Holguin).



**Fig. 1.** Tomography images (a–d) and MRI (e and f): where space occupying lesion is observed, extra-axial, right suboccipital, with significant erosion of the occipital squama (c, d), heterogeneous, predominantly hypo dense in tomography (a, b) and in the T1 weighted MRI sequence (e), hyper intense on T2-weighted sequence (h), which does not enhance with gadolinium administration (e, g) and restricts the diffusion sequence (f). Significant mass effect upon the cerebellar hemisphere and the right middle cerebellar peduncle is observed, in addition to compression of the fourth ventricle, without causing acute hydrocephaly.



**Fig. 2.** Intraoperative photos, where it is observed how the injury causes significant injury to the occipital squama (a); at the end of resection the greasy appearance of the lesion content (b) is observed.

the occipital squama was observed due to extra-axial injury, eroding the bone, avascular, not infiltrating with surrounding tissues, of pearly aspect with fatty content inside (Fig. 2). Histopathological studies, reports us soft lesion with granular areas and firm membranous areas with calcifications, reporting an epidermal cyst. The patient progressed favorably, without neurological deficits with one-year follow-up (Fig. 3).

## 2.2. Case 2

Male 46 years old, without major importance history. Since 6 months ago presents painless right frontal region deformation;

since 2 months ago with palpebral edema, which lasted four days, and was treated at another health facility as cellulitis, with antibiotics and anti-inflammatory therapy, resolving favorably; due to increasing deformity of the right frontal region, consults with private doctor who diagnosed intracranial lesion with respective imaging studies and subsequently refers to our hospital, by the mass effect is admitted (Fig. 4); at the time of admission the patient develops severe holocraneal cephalgia, accompanied by vomiting, papilledema and stupor, therefore is decided to take to the OR suite for resection of the lesion, through a centered approach; during surgery important right frontal bone erosion was

Download English Version:

<https://daneshyari.com/en/article/4288632>

Download Persian Version:

<https://daneshyari.com/article/4288632>

[Daneshyari.com](https://daneshyari.com)