



# Hypoglycemia with a large retroperitoneal mass – Case report



Jennifer A. Hawasli<sup>\*</sup>, Jacob R. Hopping, Eddy C. Hsueh

Department of Surgery, Saint Louis University School of Medicine, St. Louis, MO, United States

## ARTICLE INFO

### Article history:

Received 27 July 2014

Received in revised form 5 November 2014

Accepted 5 November 2014

Available online 11 November 2014

### Keywords:

Hypoglycemia

Retroperitoneal mass

Insulin-like growth factor

## ABSTRACT

**INTRODUCTION:** Retroperitoneal sarcomas have rarely been reported to secrete insulin-growth factor II (IGF-II) and produce an enigmatic hypoglycemia. IGF-II-secreting sarcomas represent an extremely rare subset of soft tissue tumors, and reports are limited to a handful of cases.

**PRESENTATION OF CASE:** The authors present the case of hypoglycemia due to an IGF-II-secreting retroperitoneal sarcoma that was successfully treated by complete surgical resection. This report describes the diagnosis and management of this rare syndrome with 1-year follow-up and a review of the literature.

**DISCUSSION:** Steroid and growth hormone therapies also have efficacy to treat this hypoglycemia in some patients. However, outcomes appear better if combined with surgical resection.

**CONCLUSIONS:** The findings of this case report and review of the literature support a primary role for complete tumor resection to address tumor-induced hypoglycemia.

© 2014 Published by Elsevier Ltd. on behalf of Surgical Associates Ltd. This is an open access article under the CC BY-NC-ND license (<http://creativecommons.org/licenses/by-nc-nd/3.0/>).

## 1. Introduction

Hypoglycemia is a rare but potentially life-threatening presentation of soft tissue tumors the etiology of hypoglycemia may be difficult to diagnose. Retroperitoneal sarcomas have rarely been reported to secrete insulin-growth factor II (IGF-II) which can lead to low blood glucose levels. IGF-II-secreting sarcomas represent an extremely rare subset of soft tissue tumors, and there is no consensus on the ideal management of the hypoglycemia associated with this tumor-type. Here we present a case report of hypoglycemia with a large retroperitoneal mass and review of the literature.

## 2. Presentation of the case

A 38-year-old diabetic man presented with increasing episodes of hypoglycemia over the previous 8 months. As a consequent, his insulin had been discontinued 5 months prior, despite a long history of insulin-dependent diabetes. He also complained of increasing abdominal girth over the previous several months and 15 pound weight loss. A varicocele was discovered by ultrasound after complaints of worsening right testicular pain. Biochemical work-up revealed blood glucose level was very low at 32 mg/dL.

Total and free insulin levels were <1.2 and <1.5  $\mu$ U/mL (normal: 0–22  $\mu$ U/mL), respectively. Elevated Insulin-Like Growth Factor (IGF)-II level was 944 ng/mL (normal: 288–736 ng/mL). IGF-1 levels were reduced and C-peptide levels were undetectable (normal: 1.1–4.4 nL/mL). Computer tomography (CT) of abdomen demonstrated a large right retroperitoneal tumor involving the right kidney and displacing the IVC and liver (Fig. 1A).

The patient was admitted preoperatively for intravenous dextrose while unable to eat prior to surgery. He underwent an *en block* tumor resection via a chevron incision secondary to the size of the mass. After the celiotomy, a large mass arising from the retroperitoneum was encountered occupying the majority of the right hemi-abdomen (Fig. 1B). During tumor extirpation, a plane could not be developed between the mass and right kidney. Therefore, a right nephrectomy was included in the *en block* resection. The tumor weighed 3.25 kg and measured 19.5 cm  $\times$  17.2 cm  $\times$  13.5 cm (Fig. 1B, inset). Pathological examination using stains, immunohistochemistry, electron microscopy and molecular and cytogenetic studies showed a primitive, undifferentiated mesenchymal tumor (sarcoma).

After surgery, the patient was taken to the intensive care unit for blood sugar monitoring. The expected half-lives of free IGF-II and carrier protein-bound IGF-II in a healthy male are 10–12 min and 12–15 h, respectively.<sup>1</sup> However, immediately postoperatively, the patient's glucose levels elevated to the 200s mg/dL. He was started on an insulin drip with intravenous dextrose and then was transitioned to subcutaneous insulin with resumption of a diet. He was discharged home on postoperative day 6 with a serum glucose range 90–237 mg/dL. Within one month, the patient's IGF-II level returned to normal (317 ng/mL) with a serum glucose of 170 mg/dL.

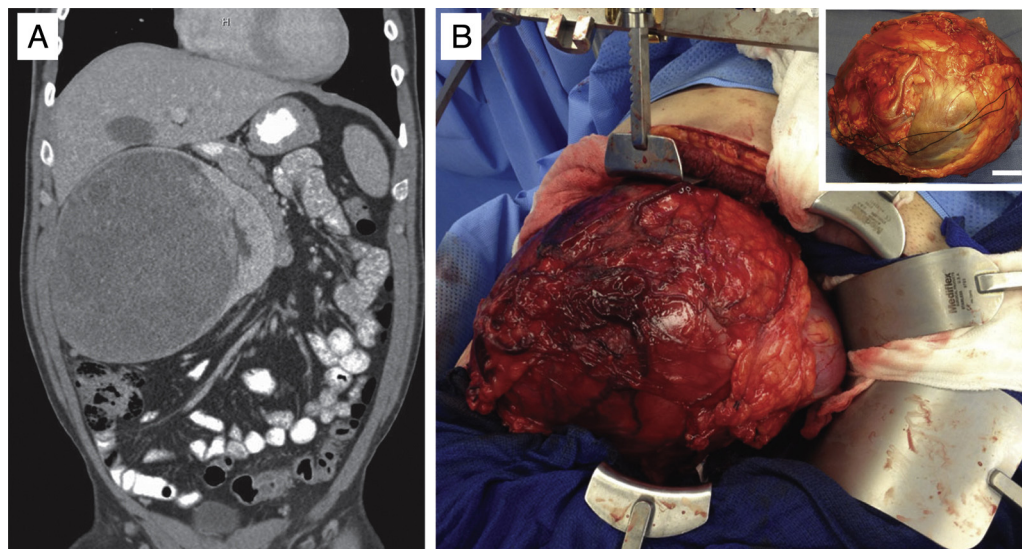
**Abbreviations:** F, female; GH, recombinant human growth hormone; M, male; MO, months; NR, not reported; RP, Retroperitoneum; YR, years.

<sup>\*</sup> Corresponding author at: Department of Surgery, Saint Louis University School of Medicine, 3rd Floor Desloge Tower, 3635 Vista at Grand Boulevard, St. Louis, MO 63110, United States. Tel.: +1 314 790 2758.

E-mail address: [JPick@SLU.edu](mailto:JPick@SLU.edu) (J.A. Hawasli).

<http://dx.doi.org/10.1016/j.ijscr.2014.11.013>

2210-2612/© 2014 Published by Elsevier Ltd. on behalf of Surgical Associates Ltd. This is an open access article under the CC BY-NC-ND license (<http://creativecommons.org/licenses/by-nc-nd/3.0/>).



**Fig. 1.** Evaluation and resection of IGF-II-secreting retroperitoneal tumor. (A) Coronal computed tomography shows a retroperitoneal tumor involving the right kidney and displacing the inferior vena cava and liver. (B) A very large mass occupied the right hemiabdomen. Inset shows the gross pathology specimen, resected *en block*. Bar indicates 3 cm.

**Table 1**

Hypoglycemia associated with IGF-II secreting tumors – literature review.

Reference	Age, sex	Symptoms	Tumor pathology, location	Treatment	Hypoglycemia outcome	Oncologic outcome
Rose et al. <sup>4</sup>	54, F	Fatigue Early satiety Weight loss	Mesenchymal solid fibrous tumor, Abdominal cavity	1. Intratumoral alcohol injections 2. Surgical debulking	Persistent hypoglycemia and death in 24 h	Not applicable
Teale and Wark <sup>3</sup> (8 cases: A–H)	34–81	Drowsiness Coma Otherwise NR	A. Carcinoma, lung B. Fibroma, thoracic C. Spindle-cell, NR D. Sarcoma, RP E. Sarcoma, NR F. Carcinoma, prostate G. Sarcoma, NR H. Fibroma, pleura	A. Steroids only B. Steroids only C. Debulking/Steroids D. Resection/chemo/steroids E. Steroids only F. Steroids/resection G. Resection H. Resection	A. Resolved, 5 MO B. Resolved, 8 MO C. Resolved, 9 MO D. Resolved, 6 MO E. Not resolved F. Resolved G. Resolved H. Resolved	A. NR B. Recur, 8 MO C. NR D. NR E. NR F. NR G. NR H. NR
Bourcigaux et al. <sup>8</sup>	67, F	Acromegaly	Pleural fibroma, hemithorax	1. Chronic steroids 2. GH 3. Steroids and GH	Resolution of hypoglycemia with combined steroids and GH	NR
Chan et al. <sup>7</sup>	70, M	Loss of consciousness	Fibrosarcoma, liver	1. Embolization 2. Complete resection	Resolved, 9 MO	Recurrence, 1 YR
De Groot et al. <sup>6</sup>	83, M	Confusion	Solid fibrous tumor, kidney	Complete resection and nephrectomy <i>en block</i>	Resolution of hypoglycemia and normalization of glucose and IGF-II	NR
	48, F	Lethargy Coma	Metastatic hemangiopericytoma, liver	1. Chronic steroids 2. Chemotherapy	Free of hypoglycemic events through 1-YR follow up	Stable disease, 1 YR
Dutta et al. <sup>5</sup>	77, M	Loss of consciousness	Sarcoma, retroperitoneum	1. Debulking 2. Chemotherapy 3. Radiotherapy 4. Chronic steroids	Free of hypoglycemic events through 6-YR follow up	Residual disease, 1 YR Asymptomatic, 6 YR Then lost to follow up

Download English Version:

<https://daneshyari.com/en/article/4289373>

Download Persian Version:

<https://daneshyari.com/article/4289373>

[Daneshyari.com](https://daneshyari.com)