

HOSTED BY



ELSEVIER

Contents lists available at ScienceDirect

Journal of Asia-Pacific Biodiversity

journal homepage: <http://www.elsevier.com/locate/japb>Journal of
Asia-Pacific
Biodiversity

Original article

Two species of genus *Ypsolopha* Latreille (Lepidoptera: Ypsolophidae) from Korea, with first description of female of *Ypsolopha fujimotoi* MoriutiSol-Moon Na^a, Dong-June Lee^a, Bo-Sun Park^a, Yang-Seop Bae^{a,b,*}^a Division of Life Science, Incheon National University, Incheon, South Korea^b Bio-Resource and Environmental Center, College of Life Sciences and Bioengineering, Incheon National University, Incheon, South Korea

ARTICLE INFO

Article history:

Received 11 March 2016
Received in revised form
26 March 2016
Accepted 6 April 2016
Available online 27 April 2016

Keywords:

Korea
Lepidoptera
Ypsolopha fujimotoi
Ypsolopha longa
Ypsolophidae

ABSTRACT

Japanese species, *Ypsolopha fujimotoi* Moriuti, 1964 is reported from Korea for the first time. Additionally, the female of *Ypsolopha fujimotoi* Moriuti is newly described. Illustrations of adults and photographs of genitalia, diagnosis, distribution, and host plants are provided, as well as a discussion of *Y. fujimotoi* Moriuti and *Ypsolopha longa* Moriuti.Copyright © 2016, National Science Museum of Korea (NSMK) and Korea National Arboretum (KNA). Production and hosting by Elsevier. This is an open access article under the CC BY-NC-ND license (<http://creativecommons.org/licenses/by-nc-nd/4.0/>).

Introduction

The genus *Ypsolopha* Latreille, 1796, belongs to the family Ypsolophidae, with about 160 described species worldwide (Jin et al 2013). Among them, about 70 species are distributed in East Asia (Jin et al 2013; Park et al 2014; Ponomarenko and Zinchenko 2013; Sohn et al 2010). *Ypsolopha* species can be recognized by the following characters: forewing elongate with round or falcate at apex; labial palpus with well tuft on ventral surface of second segment. *Ypsolopha fujimotoi* Moriuti and *Ypsolopha longa* Moriuti were described together in 1964. Also, *Y. fujimotoi* Moriuti is similar to *Y. longa* Moriuti in the superficial characteristics, but diagnostic characters of these two species are short in the original description. *Y. fujimotoi* Moriuti was described from only one male. The female genitalia are still undescribed, and additional specimens have not been collected after the original description in Japan. *Y. longa* Moriuti was first reported by Jeong et al (1995) from Korea without taxonomic notes of this species from Korea.

In the present study, we report a species *Y. fujimotoi* Moriuti, 1964 from Korea for the first time, as well as provide a discussion of *Y. longa*. Additionally, a female of *Y. fujimotoi* Moriuti, 1964 is described for the first time. Illustrations of adults and genitalia, diagnosis, description of adults and genitalia, host plants, and distribution are provided.

Materials and methods

Specimens examined are based on the materials collected from Korea. The specimens were mostly collected using light traps with a mercury vapor lamp (200 V/200 W, Dongseong Co., Korea) and four lamps (20W, FL20SbL/18, Kumho Co., Korea). Genitalia were dissected and examined under a Leica EZ4 stereomicroscope (Leica Microsystems, CMS GmbH, Wetzlar, Germany). Images of adults and genitalia were taken with a Nikon D700 digital camera attached to a Nikon AF-S VR Micro-Nikkor 105mm f/2.8G IF-ED lens (Nikon Co., Japan) and a Leica DM 2500 microscope (Leica Microsystems, CMS GmbH, Wetzlar, Germany). Voucher specimens are deposited in the Animal Diversity Laboratory, College of Life Sciences, Incheon National University, Incheon, Korea. Abbreviations used herein are as follows; TL, type locality; GG, Gyeonggi Province; GW, Gwangwon Province; JB, Jeollabuk Province; JN, Jeollanam Province; and INU, Incheon National University.

* Corresponding author. Tel.: +82 32 835 8246.

E-mail address: baeys@inu.ac.kr (Y.-S. Bae).

Peer review under responsibility of National Science Museum of Korea (NSMK) and Korea National Arboretum (KNA).

Systematic accounts

Family Ypsolophidae [Guenée, 1845](#)

Subfamily Ypsolophinae [Guenée, 1845](#)

Genus *Ypsolopha* [Latreille, 1796](#)

Ypsolopha fujimotoi [Moriuti, 1964](#)

([Figures 1A–1C, 3A–3D, 5A, 5B](#))

Ypsolophus fujimotoi [Moriuti, 1964](#): 209. TL: Japan (Kyushu).

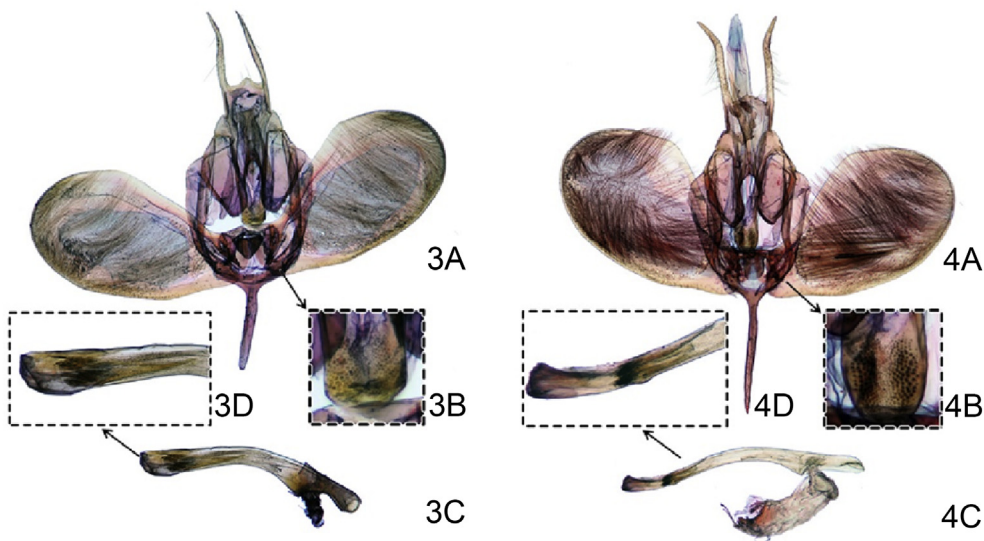
Ypsolopha fujimotoi [Moriuti, 1977](#): 106; [Moriuti, 1982](#): 211;

[Yamauchi and Hirowatari, 2013](#): 174.

Adult ([Figures 1A–1C](#)). Wingspan, 23–30 mm. Vertex rough, with reddish brown or brown, elongate narrow scales, frons smoothly pale brown, dark gray around compound eye; ocellus present. Antenna filiform; scape and flagellum reddish brown or brown. Labial palpus porrect, pointed terminally; tuft on ventral surface of second segment blackish pale brown outside and creamy white inside. Thorax reddish brown; tegula reddish brown or whitish purple inwardly, reddish brown outwardly. Fore- and midleg femur to tibia grayish white and tarsus brown; hindleg femur to tibia pale brown, tarsus mixed with black and pale brown. Forewing with apex acutely expanded outwardly, ground color reddish brown or brown with black scales scattered; a small black



Figures 1–2. Adults of *Ypsolopha* spp: 1, *Ypsolopha fujimotoi* Moriuti, ♀; 2, *Y. longa* Moriuti, ♂.



Figures 3–4. Male genitalia of *Ypsolopha* spp: 3, *Ypsolopha fujimotoi* Moriuti, gen. slide no. INU-4570; 4, *Y. longa* Moriuti, gen. slide no. INU-4567.

Download English Version:

<https://daneshyari.com/en/article/4394933>

Download Persian Version:

<https://daneshyari.com/article/4394933>

[Daneshyari.com](https://daneshyari.com)