



Short Communication

New Records of Korean Whiteflies (Hemiptera: Aleyrodidae)

Soo-Jung Suh*

Central Post-entry Quarantine Station, National Plant Quarantine Service, 234-3, Mangpo-dong, Youngtong-gu, Suwon, Republic of Korea

ARTICLE INFO

Article history:

Received 18 September 2008

Revised 10 November 2008

Accepted 11 November 2008

Keywords:

Whiteflies

Aleyrodidae

New records

Korea

*Aleuroclava**Asterobemisia**Pentaleyrodes**Rhachisphora*

ABSTRACT

Four aleyrodid species, *Aleuroclava montanus* (Takahashi), *Asterobemisia atraphaxius* (Danzig), *Pentaleyrodes yasumatsui* Takahashi, and *Rhachisphora styraci* (Takahashi) are newly recorded in the Korean fauna of whiteflies (Aleyrodidae).

© Korean Society of Applied Entomology, Taiwan Entomological Society and Malaysian Plant Protection Society, 2008 Published by Elsevier B.V. All rights reserved.

Introduction

Whiteflies (Aleyrodidae) of about 1556 species belonging to 161 genera worldwide have been listed (Evans, 2008; Martin and Mound, 2007). Even though they are a small group, aleyrodids have recently become one of the most economically important groups of insect pests on crops and ornamental plants. Due to the increase in importation of plant materials from various countries, Korean agriculture may be threatened by the introduction of invasive whitefly species. The proper evaluation of the potential threat of a whitefly species intercepted on imported products and the determination of the appropriate response or action that needs to be taken, require the knowledge of which species of whiteflies are already known to occur in Korea. Twenty species in 13 genera of whiteflies have been documented from Korea (Lee et al., 2005; Suh and Hodges, 2005).

This paper records the occurrence of additional species of whiteflies, namely, *Aleuroclava montanus* (Takahashi), *Asterobemisia atraphaxius* (Danzig), *Pentaleyrodes yasumatsui* Takahashi, and *Rhachisphora styraci* (Takahashi) in Korean fauna, and provides illustrations, brief descriptions and information on the distribution

and hosts of each species. An asterisk (*) is used to indicate new host or distribution records.

***Aleuroclava montanus* (Takahashi) (Figs. 1–3)**

Taiwanaleyrodes montanus Takahashi 1939

Diagnosis

Black puparium, not very sclerotised on the median area of dorsum (Fig. 1). Submarginal area without markings, which are parallel to the mesal wavy margin (Figs. 1 and 2). Caudal furrow distinct, slightly narrowed towards the hind end. Vasiform orifice rather large and circular. Anterior marginal area of the vasiform orifice expanded (Fig. 3) (Takahashi, 1939).

Specimens examined

Korea. Jejudo: Seongpanak, 3 puparia (on the underside of leaf), on *Daphniphyllum teijsmanni*, 20.x.2005 (S.J. Suh).

Distribution

*Korea and Taiwan.

Host plants

**Daphniphyllum teijsmanni* Zollinger ex Kurg (Daphniphyllaceae). An unidentified species of Lauraceae was listed as the host of this species in Taiwan (Takahashi, 1939).

* Fax: +82 31 204 0668.

E-mail address: suhj97@npqs.go.kr.



Fig. 1. *Aleuroclava montanus* (Takahashi); puparium.



Fig. 3. *Aleuroclava montanus* (Takahashi); vasiform orifice.

***Asterobemisia atraphaxius* (Danzig) (Figs. 4–6)**

Neobemisia atraphaxius Danzig 1969

Diagnosis

Black puparium. Transverse moulting suture curved, directed anteriorly, joined at the anterior end of body to form a closed figure (Fig. 4). Abdominal segmentation distinct, rhachis faint and forming short ridges (Fig. 5). Caudal furrow undeveloped (Fig. 6).

Specimens examined

Korea. Chungcheongnamdo: Anmyeondo, 9 puparia (on the underside of leaf), on *Polygonum* sp., 15.ix.2006 (S.J. Suh).

Distribution

Iran, *Korea, Russia and Europe.

Host plants

Polygonum sp. (Polygonaceae). In addition twelve different plant families were listed as hosts (Evans, 2008).



Fig. 2. *Aleuroclava montanus* (Takahashi); Cephalothoracic margin.

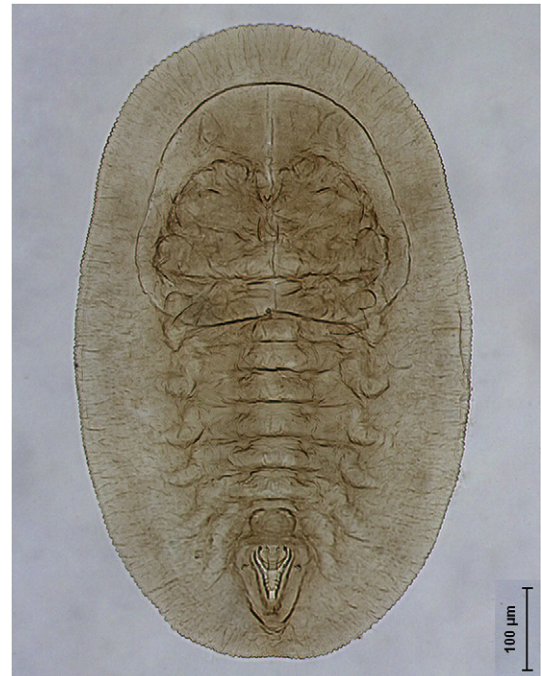


Fig. 4. *Asterobemisia atraphaxius* (Danzig); puparium.

Download English Version:

<https://daneshyari.com/en/article/4524990>

Download Persian Version:

<https://daneshyari.com/article/4524990>

[Daneshyari.com](https://daneshyari.com)