

## Accepted Manuscript

Mathematically Modeling Chromatograms of Evaporated Ignitable Liquids for Fire Debris Applications

Ruth Waddell Smith, Rebecca J. Brehe, John W. McIlroy, Victoria L. McGuffin

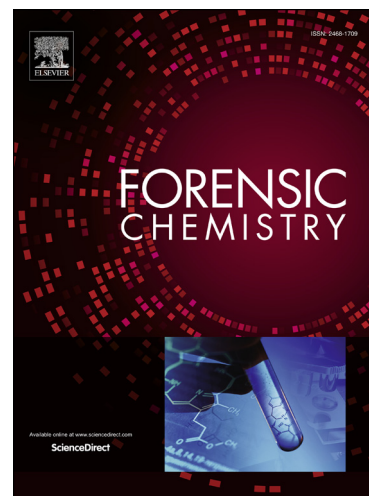
PII: S2468-1709(16)30027-3  
DOI: <http://dx.doi.org/10.1016/j.forc.2016.08.005>  
Reference: FORC 16

To appear in: *Forensic Chemistry*

Received Date: 13 May 2016  
Revised Date: 24 August 2016  
Accepted Date: 25 August 2016

Please cite this article as: R.W. Smith, R.J. Brehe, J.W. McIlroy, V.L. McGuffin, Mathematically Modeling Chromatograms of Evaporated Ignitable Liquids for Fire Debris Applications, *Forensic Chemistry* (2016), doi: <http://dx.doi.org/10.1016/j.forc.2016.08.005>

This is a PDF file of an unedited manuscript that has been accepted for publication. As a service to our customers we are providing this early version of the manuscript. The manuscript will undergo copyediting, typesetting, and review of the resulting proof before it is published in its final form. Please note that during the production process errors may be discovered which could affect the content, and all legal disclaimers that apply to the journal pertain.



**Mathematically Modeling Chromatograms of Evaporated Ignitable Liquids for Fire Debris Applications**

Ruth Waddell Smith<sup>a</sup>, Rebecca J. Brehe<sup>a,1</sup>, John W. McIlroy<sup>a,b,2</sup>, and Victoria L. McGuffin<sup>b</sup>

<sup>a</sup>Forensic Science Program, School of Criminal Justice, Michigan State University, East Lansing, MI 48824

<sup>b</sup>Department of Chemistry, Michigan State University, East Lansing, MI 48824

**Corresponding Authors**

Ruth Waddell Smith

Forensic Science Program

School of Criminal Justice

578 S Shaw Lane, Rm 319

Michigan State University

East Lansing, MI 48824

[rwsmith@msu.edu](mailto:rwsmith@msu.edu)

Victoria L. McGuffin

Department of Chemistry

578 S Shaw Lane, Rm 318

Michigan State University

East Lansing, MI 48824

[mcguffin@msu.edu](mailto:mcguffin@msu.edu)

**Present Address**

<sup>1</sup>RD Laboratories, Inc.

204 Lange Drive

Washington, MO 63090

<sup>2</sup>Drug Enforcement Administration

South Central Laboratory

10150 Technology Blvd.

Dallas, TX 75220

Download English Version:

<https://daneshyari.com/en/article/4760216>

Download Persian Version:

<https://daneshyari.com/article/4760216>

[Daneshyari.com](https://daneshyari.com)