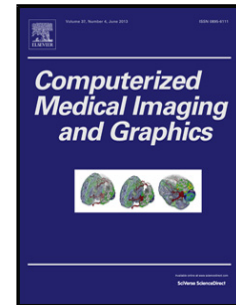


Accepted Manuscript

Title: Graph-Based Segmentation of Abnormal Nuclei in Cervical Cytology

Author: Ling Zhang Hui Kong Shaoxiong Liu Tianfu Wang
Siping Chen Milan Sonka



PII: S0895-6111(17)30002-2
DOI: <http://dx.doi.org/doi:10.1016/j.compmedimag.2017.01.002>
Reference: CMIG 1488

To appear in: *Computerized Medical Imaging and Graphics*

Received date: 21-3-2016
Revised date: 15-11-2016
Accepted date: 26-1-2017

Please cite this article as: Ling Zhang, Hui Kong, Shaoxiong Liu, Tianfu Wang, Siping Chen, Milan Sonka, Graph-Based Segmentation of Abnormal Nuclei in Cervical Cytology, *Computerized Medical Imaging and Graphics* (2017), <http://dx.doi.org/10.1016/j.compmedimag.2017.01.002>

This is a PDF file of an unedited manuscript that has been accepted for publication. As a service to our customers we are providing this early version of the manuscript. The manuscript will undergo copyediting, typesetting, and review of the resulting proof before it is published in its final form. Please note that during the production process errors may be discovered which could affect the content, and all legal disclaimers that apply to the journal pertain.

- A general method for improving the segmentation of abnormal cell nuclei.
- Nuclear shape constraint is embedded in the construction of the segmentation graph.
- Nucleus border, region, and context are incorporated in a global optimal solution.
- Our approach demonstrates superior performance on two cervical cell datasets.

Accepted Manuscript

Download English Version:

<https://daneshyari.com/en/article/4964701>

Download Persian Version:

<https://daneshyari.com/article/4964701>

[Daneshyari.com](https://daneshyari.com)