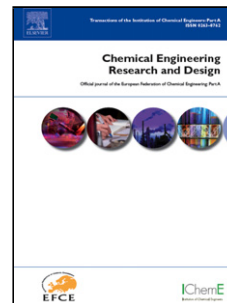


Accepted Manuscript

Title: Assessment and computation of the delay tolerability for batch reactors under uncertainty

Authors: Weiqing Huang, Hongbo Fan, Yu Qian, Faliang Cheng



PII: S0263-8762(17)30330-1
DOI: <http://dx.doi.org/doi:10.1016/j.cherd.2017.06.010>
Reference: CHERD 2713

To appear in:

Received date: 20-3-2017
Revised date: 2-6-2017
Accepted date: 12-6-2017

Please cite this article as: Huang, Weiqing, Fan, Hongbo, Qian, Yu, Cheng, Faliang, Assessment and computation of the delay tolerability for batch reactors under uncertainty. *Chemical Engineering Research and Design* <http://dx.doi.org/10.1016/j.cherd.2017.06.010>

This is a PDF file of an unedited manuscript that has been accepted for publication. As a service to our customers we are providing this early version of the manuscript. The manuscript will undergo copyediting, typesetting, and review of the resulting proof before it is published in its final form. Please note that during the production process errors may be discovered which could affect the content, and all legal disclaimers that apply to the journal pertain.

Submitted to Chemical Engineering Research and Design

Assessment and computation of the delay tolerability for batch reactors under uncertainty

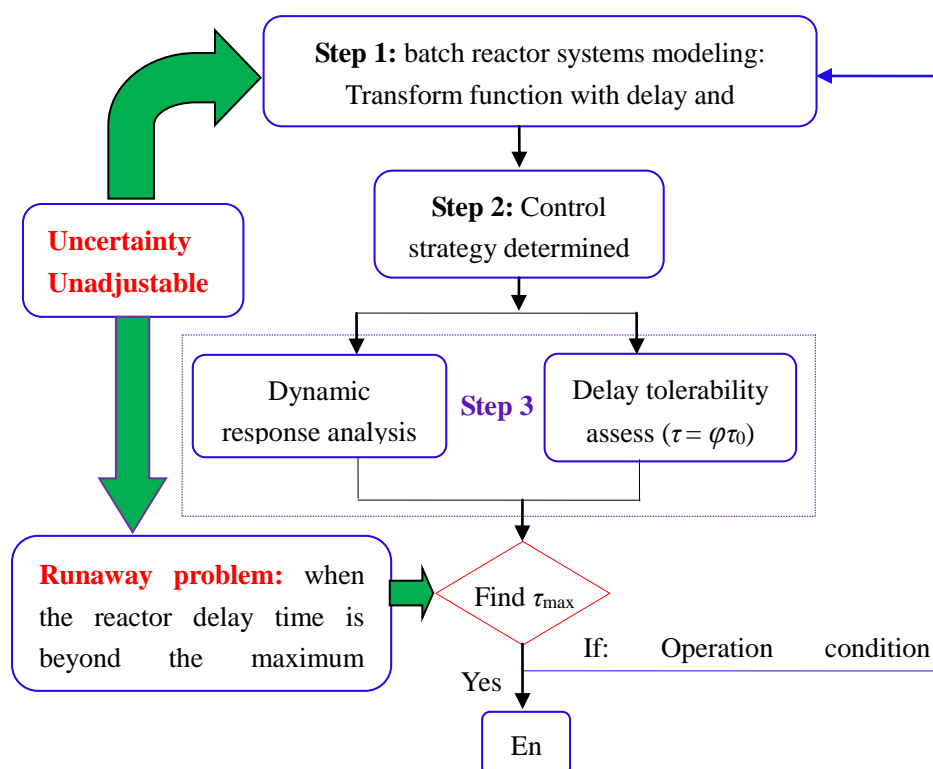
Weiqing Huang^{a,*}, Hongbo Fan^a, Yu Qian^b, Faliang Cheng^a

^a School of Environment and Civil Engineering, Dongguan University of Technology, Dongguan, Guangdong 523808, PR China

^b School of Chemical Engineering, South China University of Technology, Guangzhou 510640, PR China

*Corresponding Author. E-mail address: huangwq@dgut.edu.cn (W. Huang)

Graphical Abstract



To find the maximum tolerable time delay of batch reactors, a delay tolerability index problem (DTI) is proposed based on the bisection search method combining with dynamic response analysis.

Download English Version:

<https://daneshyari.com/en/article/4987201>

Download Persian Version:

<https://daneshyari.com/article/4987201>

[Daneshyari.com](https://daneshyari.com)