

Accepted Manuscript

Title: A simple dilute and shoot approach incorporated with pentafluorophenyl (PFP) column based LC-MS/MS assay for the simultaneous determination of trimethylamine *N*-oxide and trimethylamine in spot urine samples with high throughput

Authors: Xiaoguang Sunny Li, Shu Li, Gottfried Kellermann

PII: S1570-0232(17)30940-6
DOI: <https://doi.org/10.1016/j.jchromb.2017.09.049>
Reference: CHROMB 20827

To appear in: *Journal of Chromatography B*

Received date: 23-5-2017
Revised date: 18-8-2017
Accepted date: 30-9-2017

Please cite this article as: Xiaoguang Sunny Li, Shu Li, Gottfried Kellermann, A simple dilute and shoot approach incorporated with pentafluorophenyl (PFP) column based LC-MS/MS assay for the simultaneous determination of trimethylamine *N*-oxide and trimethylamine in spot urine samples with high throughput, *Journal of Chromatography B* <https://doi.org/10.1016/j.jchromb.2017.09.049>

This is a PDF file of an unedited manuscript that has been accepted for publication. As a service to our customers we are providing this early version of the manuscript. The manuscript will undergo copyediting, typesetting, and review of the resulting proof before it is published in its final form. Please note that during the production process errors may be discovered which could affect the content, and all legal disclaimers that apply to the journal pertain.



A simple dilute and shoot approach incorporated with pentafluorophenyl (PFP) column based LC-MS/MS assay for the simultaneous determination of trimethylamine *N*-oxide and trimethylamine in spot urine samples with high throughput

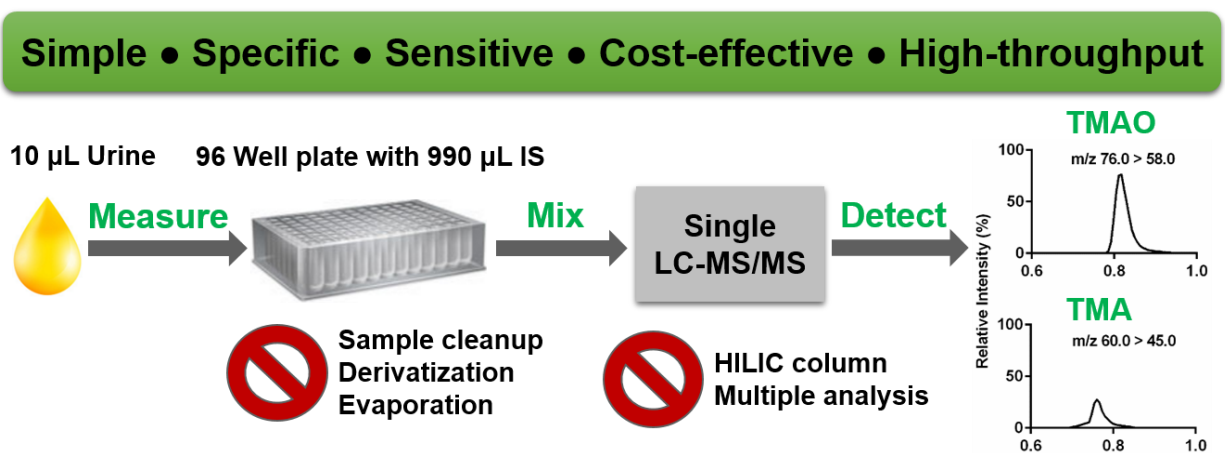
Xiaoguang (Sunny) Li *xiaoguang.li@pharmasan.com, Shu Li, Gottfried Kellermann

Pharmasan Labs, Inc., 373 280th Street, Osceola, WI 54020, USA

*Corresponding author: Pharmasan Labs, Inc., 373 280th Street, Osceola, WI 54020, USA

Tel: +1 715 294 1433; Fax: +1 715 294 3921; E-mail address:

Graphical Abstract



Highlights

- Simultaneous LC-MS/MS determination of urinary TMAO and TMA without derivatization.
- First dilute and shoot for TMAO and TMA analysis without sample preparation.
- Rapid LC separation on a PFP column instead of predominant HILIC column.
- Clinical utility of spot urine collection as alternative to traditional 24h urine.

Download English Version:

<https://daneshyari.com/en/article/5136136>

Download Persian Version:

<https://daneshyari.com/article/5136136>

[Daneshyari.com](https://daneshyari.com)