

Accepted Manuscript

Title: Prediction Model for Construction Cost of Conventional and Sustainable College Buildings in North America

Author: Othman Subhi Alshamrani

PII: S1658-3655(16)00014-5
DOI: <http://dx.doi.org/doi:10.1016/j.jtusci.2016.01.004>
Reference: JTUSCI 284



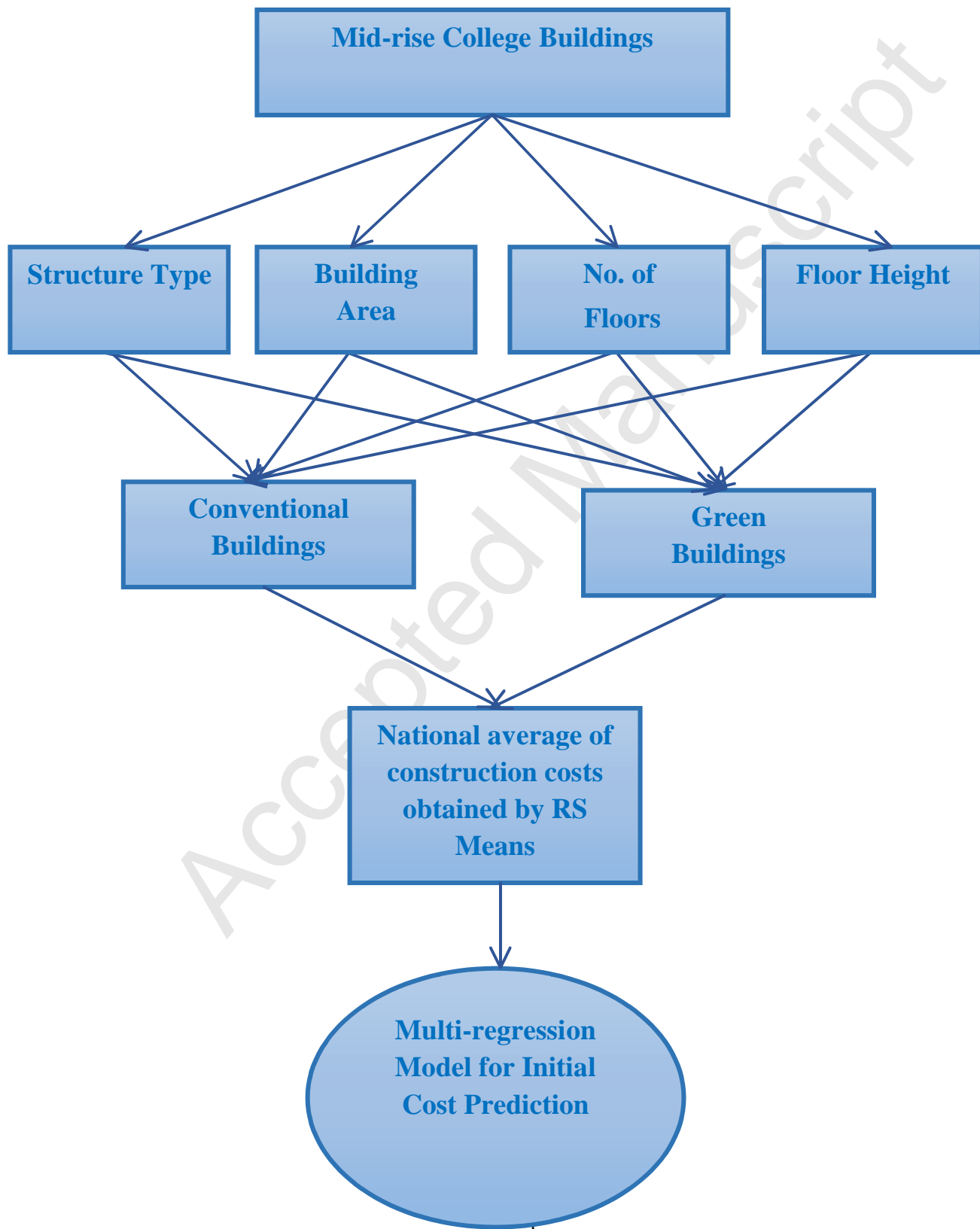
To appear in:

Received date: 27-8-2015
Revised date: 24-1-2016
Accepted date: 25-1-2016

Please cite this article as: O.S. Alshamrani, Prediction Model for Construction Cost of Conventional and Sustainable College Buildings in North America, *Journal of Taibah University for Science* (2016), <http://dx.doi.org/10.1016/j.jtusci.2016.01.004>

This is a PDF file of an unedited manuscript that has been accepted for publication. As a service to our customers we are providing this early version of the manuscript. The manuscript will undergo copyediting, typesetting, and review of the resulting proof before it is published in its final form. Please note that during the production process errors may be discovered which could affect the content, and all legal disclaimers that apply to the journal pertain.

Graphical Abstract



Download English Version:

<https://daneshyari.com/en/article/5143551>

Download Persian Version:

<https://daneshyari.com/article/5143551>

[Daneshyari.com](https://daneshyari.com)