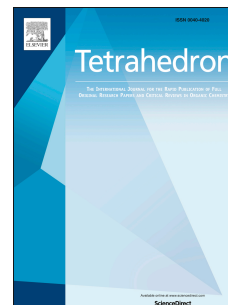


# Accepted Manuscript



Solvent-dependent selective fluorescence sensor for  $Zn^{2+}$  and  $Al^{3+}$  based on a new diarylethene with a salicylal schiff base group

Lele Ma, Gang Liu, Shouzhi Pu, Chunhong Zheng, Congbin Fan

PII: S0040-4020(17)30134-5

DOI: [10.1016/j.tet.2017.02.009](https://doi.org/10.1016/j.tet.2017.02.009)

Reference: TET 28450

To appear in: *Tetrahedron*

Received Date: 25 October 2016

Revised Date: 17 January 2017

Accepted Date: 6 February 2017

Please cite this article as: Ma L, Liu G, Pu S, Zheng C, Fan C, Solvent-dependent selective fluorescence sensor for  $Zn^{2+}$  and  $Al^{3+}$  based on a new diarylethene with a salicylal schiff base group, *Tetrahedron* (2017), doi: 10.1016/j.tet.2017.02.009.

This is a PDF file of an unedited manuscript that has been accepted for publication. As a service to our customers we are providing this early version of the manuscript. The manuscript will undergo copyediting, typesetting, and review of the resulting proof before it is published in its final form. Please note that during the production process errors may be discovered which could affect the content, and all legal disclaimers that apply to the journal pertain.

## Graphical Abstract

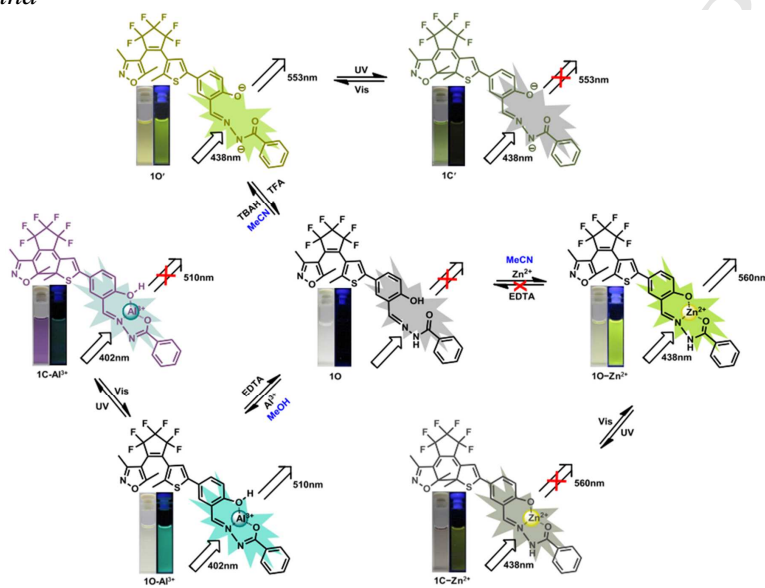
To create your abstract, type over the instructions in the template box below.  
Fonts or abstract dimensions should not be changed or altered.

### Solvent-dependent selective fluorescence sensor for $Zn^{2+}$ and $Al^{3+}$ based on a new diarylethene with a salicylal Schiff base group

Lele Ma, Gang Liu, Shouzhi Pu\*, Chunhong Zheng, Congbin Fan

Jiangxi Key Laboratory of Organic Chemistry, Jiangxi Science and Technology Normal University, Nanchang, Jiangxi 330013, PR China

Leave this area blank for abstract info.



Download English Version:

<https://daneshyari.com/en/article/5212597>

Download Persian Version:

<https://daneshyari.com/article/5212597>

[Daneshyari.com](https://daneshyari.com)