

Accepted Manuscript

A highly selective dual channel hypochlorite probe based on fluorescein and 1,10-phenanthroline

Melek Pamuk Algi

PII: S0040-4020(16)30067-9

DOI: [10.1016/j.tet.2016.02.004](https://doi.org/10.1016/j.tet.2016.02.004)

Reference: TET 27474

To appear in: *Tetrahedron*

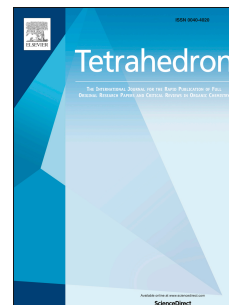
Received Date: 2 December 2015

Revised Date: 18 January 2016

Accepted Date: 1 February 2016

Please cite this article as: Algi MP, A highly selective dual channel hypochlorite probe based on fluorescein and 1,10-phenanthroline, *Tetrahedron* (2016), doi: 10.1016/j.tet.2016.02.004.

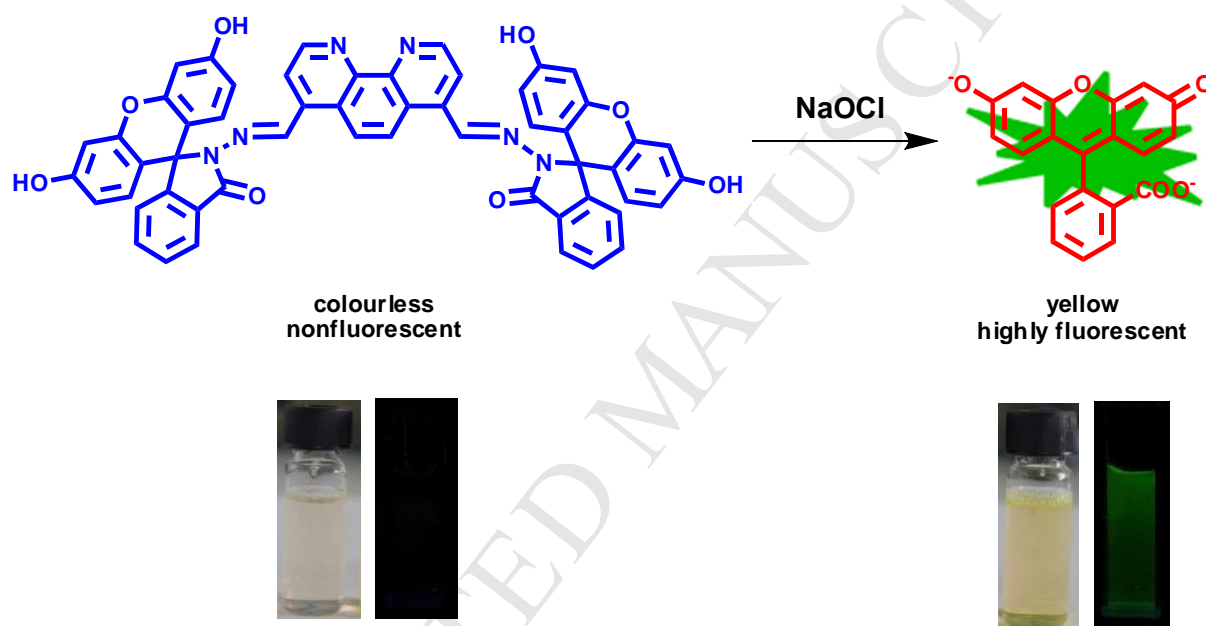
This is a PDF file of an unedited manuscript that has been accepted for publication. As a service to our customers we are providing this early version of the manuscript. The manuscript will undergo copyediting, typesetting, and review of the resulting proof before it is published in its final form. Please note that during the production process errors may be discovered which could affect the content, and all legal disclaimers that apply to the journal pertain.



Graphical Abstract

A highly selective dual channel hypochlorite probe based on fluorescein and 1,10-phenanthroline

Melek Pamuk Algi*



Download English Version:

<https://daneshyari.com/en/article/5213946>

Download Persian Version:

<https://daneshyari.com/article/5213946>

[Daneshyari.com](https://daneshyari.com)