



## N-Bromosuccinimide mediated synthesis of triazatruxenes from indoles <sup>☆</sup>



Natthawut Toworakajohnkun <sup>a</sup>, Mongkol Sukwattanasinitt <sup>a,b</sup>, Paitoon Rashatasakhon <sup>a,b,\*</sup>

<sup>a</sup> Department of Chemistry, Faculty of Science, Chulalongkorn University, Bangkok 10330, Thailand

<sup>b</sup> Nanotec-CU Center of Excellence on Food and Agriculture, Department of Chemistry, Faculty of Science, Chulalongkorn University, Bangkok 10330, Thailand

### ARTICLE INFO

#### Article history:

Received 7 August 2017

Revised 19 September 2017

Accepted 20 September 2017

Available online 21 September 2017

#### Keywords:

Indole

Triazatruxene

N-Bromosuccinimide

Trimerization

Optimization

### ABSTRACT

A new synthetic method for triazatruxenes from indoles is developed using *N*-bromosuccinimide (NBS) as a user-friendly reagent. Major reaction parameters including the amount of NBS, substrate concentration, temperature, addition rate and addition method are investigated. Additional experiments are also conducted in order to gain access toward the reaction mechanism. Compared to the use of Br<sub>2</sub> in the conventional method, this reaction requires less reaction time, provides better yields, and displays excellent reproducibility. The reaction can be conveniently performed at 10 g scale and it is also applicable to several substituted indoles, benzoindole, and *N*-alkyl indoles.

© 2017 Elsevier Ltd. All rights reserved.

Triazatruxenes (TAT) are cyclic trimers of indole which are known for their excellent thermal stability and outstanding photo-physical behavior.<sup>1</sup> They have been frequently used as key building blocks in the synthesis of optoelectronic materials for various applications such as organic light-emitting diodes,<sup>2</sup> solar cells,<sup>3</sup> batteries and capacitors.<sup>4</sup> According to the literature survey, there are two conventional synthetic methods for TAT which involve the cyclotrimerization of either indoles or oxindoles (Scheme 1). The treatment of indole with liquid Br<sub>2</sub> followed by debromination using Pd/C and triethylammonium formate has been reported by Robertson<sup>5</sup> and Franceschin.<sup>6</sup> The reaction usually provided poor yields of TAT ranging between 13 and 18%, and there has never been any example of such reaction on *N*-alkylated indole reported in the literature. Meanwhile, there have been reports on the reaction of oxindoles with phosphorus oxychloride (POCl<sub>3</sub>) which provided triazatruxene in varying yields between 6 and 48% yield.<sup>3b–6</sup> However, the higher price of oxindoles as compared to indole derivatives along with the high toxicity of reactive liquid reagents (both Br<sub>2</sub> and POCl<sub>3</sub>) led us to investigate the cyclotrimerization of indoles using a safer and more manageable reagent. Since *N*-bromosuccinimide (NBS) has been a successful replacement for Br<sub>2</sub> in a number of reactions,<sup>7</sup> we herein report our development of

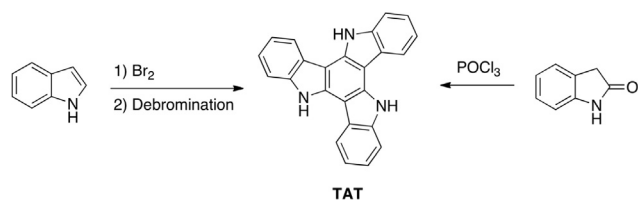
NBS-catalyzed cyclotrimerization of indoles. The key reaction parameters such as the amount of NBS, the type of solvent, the substrate concentration, reaction time and temperature were investigated on the 0.1-g reaction using the unsubstituted indole as a model substrate. The scope and generality of this process were explored using substituted indoles as reactants. The reproducibility and scalability were also demonstrated on several 1 and 10-g batches.

We began this work by re-examining the synthesis of TAT from indole using liquid Br<sub>2</sub> in CH<sub>3</sub>CN as reported by Franceschin.<sup>6</sup> It should be noted that in this procedure, the crude product mixture became insoluble in most organic solvents since it was composed of various poly-brominated TAT. Without isolation, this insoluble mixture was converted to the unsubstituted TAT by a reductive debromination using triethylammonium formate and Pd/C. We next directly replaced liquid Br<sub>2</sub> with NBS under the same reaction conditions to obtain an insoluble crude mixture which was supposed to be a mixture of compounds including brominated TAT. The crude product mixture was then subjected to the reductive debromination procedure mentioned previously. As for this initial viability assessment, we found that the use of NBS could poorly afford both symmetrical TAT (**2**) and asymmetrical TAT (**3**) in 6 and 8% yields, respectively, after flash chromatography. When NBS was replaced by its chloro and iodo analogs (NCS and NIS), only starting indole was detected by TLC. These results indicated a feasibility of this project and prompted us to further investigate other reaction parameters.

<sup>☆</sup> In remembrance of His Majesty King Bhumibol Adulyadej (1927–2016), for his life-time dedication to Thailand.

\* Corresponding author at: Department of Chemistry, Faculty of Science, Chulalongkorn University, Bangkok 10330, Thailand.

E-mail address: [paitoon.r@chula.ac.th](mailto:paitoon.r@chula.ac.th) (P. Rashatasakhon).



**Scheme 1.** Typical synthesis of triazatruxenes (TAT).

The reaction optimization was conducted on 0.1 g of indole using a 2-step procedure as mentioned above. We first examined the effect of the solvent by using nonpolar ( $\text{CHCl}_3$ ), aprotic polar (EtOAc, acetone,  $\text{CH}_3\text{CN}$ , DMF, DMSO) and protic solvent ( $\text{CH}_3\text{OH}$ ) (Table 1, entry 1–7). Reactions in  $\text{CHCl}_3$  and EtOAc were very sluggish and a lot of unreacted indole was detected after 16 h. This might probably be due to the low solubility of NBS. The treatment of indole with NBS in DMF or DMSO, which has been a conventional method for preparation of 3-bromoindole, gave raise to very poor yields of the trimerized products. On the other hands, reactions in acetone and  $\text{CH}_3\text{OH}$  resulted in a number of unidentified products. Acetonitrile ( $\text{CH}_3\text{CN}$ ) was then chosen as the best solvent for further experiments. Next, we varied the amount of NBS from 1 to 5 M equivalents compared to indole (Table 1, entry 4, 8–11) and noticed that the ratios between **2** and **3** decreased as the amount of NBS increased. The results implied that the amount of NBS can affect the mechanism by which the two products are formed.

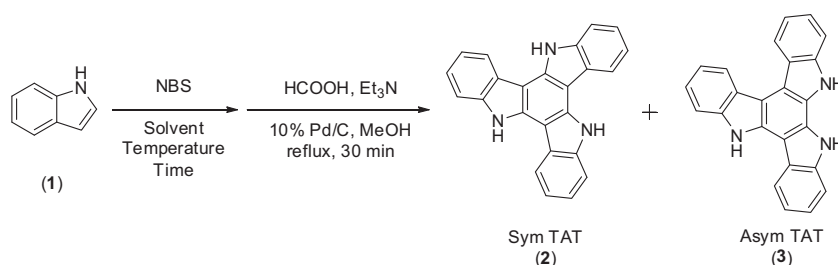
Since this reaction involves a combination of three indole molecules, the reactant concentration can affect the product yields. We

then varied the amount of  $\text{CH}_3\text{CN}$  from 1 to 8 mL in order to obtain solutions of starting indole at 0.85–0.11 M (Table 1, entry 9, 12–14). Significantly lower yields were obtained at the indole concentration of 0.11 M (0.1 g in 8 mL), but a strongly exothermic reaction with unaffected product yields was observed at 0.85 M of indole (0.1 g in 1 mL). Therefore, the concentration of indole at 0.43 M (0.1 g in 2 mL) was selected as the most practical condition. Even though this reaction is exothermic, it poorly produced the expected products in 4–5% yields when conducted at 0 °C (Table 1 entry 15). The reactions at ambient temperature (28 °C) and 50 °C (Table 1, entry 9 and 16) were quite similar in term of product yields and ratios. Therefore, we chose to perform this reaction at 28 °C which is convenient for further studies.

According to Franceschin procedure, the reaction time between indole and liquid bromine required an overnight stirring at room temperature. From our investigation, the overall yields of the NBS-catalyzed trimerization reached about 40% after 3 h of stirring at room temperature. Prolong stirring of the reaction mixture did not improve the yields (Table 1, entry 9 and 17–20). The optimal conditions, therefore, involve a treatment of indole with 2 equivalents of NBS in  $\text{CH}_3\text{CN}$  at room temperature for 3 h (Table 1, entry 19), followed by a reductive debromination. This condition provides symmetrical TAT (**2**) and asymmetrical TAT (**3**) in a total yield of 39%.

During the addition of NBS into a solution of indole, we usually observed generation of heat that could cause evaporation of volatile solvent if the NBS addition was too fast. Therefore, we studied the effect of addition rate and addition method on the reaction efficiency. For every reaction in the optimization studies

**Table 1**  
Optimization studies on the cyclotrimerization reaction.<sup>a</sup>



Entry	Solvent	NBS (eq.)	[indole] (M)	Temp. (°C)	Time (h)	Yield (%) <sup>b</sup>	
						<b>2</b>	<b>3</b>
1	$\text{CHCl}_3$	3	0.43	28	16	2	12
2	EtOAc	3	0.43	28	16	1	1
3	Acetone	3	0.43	28	16	–	–
4	MeCN	3	0.43	28	16	15	18
5	DMF	3	0.43	28	16	1	1
6	DMSO	3	0.43	28	16	2	1
7	MeOH	3	0.43	28	16	–	–
8	MeCN	1	0.43	28	16	10	1
9	MeCN	2	0.43	28	16	23	12
10	MeCN	4	0.43	28	16	13	24
11	MeCN	5	0.43	28	16	9	18
12	MeCN	2	0.11	28	16	8	6
13	MeCN	2	0.21	28	16	21	11
14	MeCN	2	0.85	28	16	21	12
15	MeCN	2	0.43	0	16	5	4
16	MeCN	2	0.43	50	16	21	8
17	MeCN	2	0.43	28	1	15	16
18	MeCN	2	0.43	28	2	16	15
19	MeCN	2	0.43	28	3	23	16
20	MeCN	2	0.43	28	6	23	17

<sup>a</sup> Conditions: Indole (0.1 g, 0.85 mmol), HCOOH (3.02 mmol),  $\text{Et}_3\text{N}$  (3.02 mmol), 10% Pd/C (0.018 mmol), in MeOH (3 mL).

<sup>b</sup> HPLC yields were estimated from the calibration curves.

Download English Version:

<https://daneshyari.com/en/article/5264231>

Download Persian Version:

<https://daneshyari.com/article/5264231>

[Daneshyari.com](https://daneshyari.com)