



Regular Article

The equilibrium crystal shape of strontium titanate: Impact of donor doping



Wolfgang Rheinheimer*, Fabian J. Altermann, Michael J. Hoffmann

Institute of Applied Materials – Ceramic materials and Technologies (IAM-KWT), Karlsruhe Institute of Technology (KIT), Haid-und-Neu-Str. 7, 76131 Karlsruhe, Germany

ARTICLE INFO

Article history:

Received 21 July 2016

Received in revised form 9 September 2016

Accepted 13 September 2016

Available online xxx

Keywords:

Equilibrium crystal shape

Anisotropy

Surface energy

Strontium titanate

Point defects

ABSTRACT

The present study investigates the impact of point defect concentrations on the equilibrium crystal shape of strontium titanate. Therefore the shape of intergranular pores in coarse microstructures was observed. The point defect concentration was changed by donor-doping with Niobium (0.2 at.%–2.4 at.%). A decreasing surface energy anisotropy was found with increasing donor dopant concentration and with increasing temperature. These findings are correlated to the defect chemistry and grain growth behavior of strontium titanate.

© 2016 Acta Materialia Inc. Published by Elsevier Ltd. All rights reserved.

Grain growth in undoped strontium titanate is known to show a remarkable anomaly as the growth rate k decreases by orders of magnitude in the temperature range of 1350 °C–1425 °C [1–4]. This counterintuitive behavior was observed using a standard grain growth law

$$D^2 - D_0^2 = k \cdot t = 2\alpha\gamma_{GB}m \cdot t \quad (1)$$

with the mean grain size D , the grain size D_0 at time $t=0$, the grain boundary energy γ_{GB} , the grain boundary mobility m , a geometric constant α close to one [5] and the grain growth rate constant $k=2\alpha\gamma_{GB}m$, which includes the grain boundary energy and mobility [6].

Despite of a number of studies, the origin of the grain growth anomaly of strontium titanate is yet not understood in detail. While the anomaly is most likely related to an interaction of point defects and boundary motion [3,7,8], the importance of interfacial anisotropy (i.e. grain boundary mobility and energy) was discussed as well [1,9,10]. Whereas a multitude of information on both parameters is available for the undoped material, few studies investigate the impact of point defects on the interfacial energy and its anisotropy. Accordingly the present study explores the surface energy anisotropy at different donor dopant levels for the perovskite model system strontium titanate.

As in previous studies [9,11–13], the surface energy anisotropy was approached by observing the equilibrium crystal shape. The equilibrium

crystal shape (Wulff shape) reflects the minimization of surface energy of an isolated particle or void [14,15] and directly relates to the relative surface energy and anisotropy. However, the observation of the equilibrium crystal shape is difficult due to the kinetics of equilibration. Growing or shrinking particles or voids will be bounded preferentially by low-mobility and not necessarily by low-energy planes, and will therefore have a kinetic impact on the crystal shape [16,17]. Discriminating between the equilibrium shape and a kinetic shape is a central problem in every study of the Wulff shape [18,19]. Different analytical approaches to the equilibration kinetics of particles or pores have been used [19,20], in which the most important factor for equilibration of an isolated particle or void is its size. In this study, the Wulff shape of small intragranular pores was used to measure the anisotropy of the surface energy as a function of temperature.

Small pores needed for analysis of the Wulff shape were obtained by observing overgrown pores in coarse polycrystalline microstructures, which passed through a stage of rapid grain growth. Stoichiometric polycrystalline material was prepared by a mixed oxide/carbonate route based on high purity raw materials (SrCO₃ and TiO₂, purity of 99.95% and 99.995%, Sigma Aldrich Chemie GmbH, Taufkirchen, Germany). Niobium(V)oxide (Nb₂O₅, purity of 99.9%, chemPUR GmbH, Karlsruhe, Germany) was used as donor dopant on the B-site of the perovskite lattice. Charge compensation was assumed to be electronic. The dopant concentrations were 0.2 at.%, 0.6 at.%, 1.2 at.% and 2.4 at.% with respect to the B-site of the perovskite lattice. Further details of the powder synthesis are published elsewhere [21,22].

Samples were sintered at 1600 °C for 10 h in a batch furnace (HTK 16 K, Carbolite Gero GmbH & Co. KG, Neuhausen, Germany). At this

* Corresponding author.

E-mail address: wolfgang.rheinheimer@kit.edu (W. Rheinheimer).

temperature coarse-grained microstructures are obtained with a multitude of intragranular pores [9,21].

Samples were equilibrated at 1350 °C for 96 h, at 1460 °C for 55 h or at 1600 °C for 10 h in oxygen in a tube furnace (HRTV70-250, Carbolite Gero GmbH & Co. KG, Neuhausen, Germany). In a previous study, these heating times were argued to be sufficient for the equilibration of pores in strontium titanate [9]. Samples were gas-quenched to room temperature at ~200 K/min to minimize changes of the pore shape during cooling.

The pore shape was observed by SEM-imaging (Nova NanoSEM 450, FEI, Hillsboro, USA). The typical size of the measured pores was 0.5–2 μm (max. 3 μm at high temperatures). At each temperature at least 5 pores (typically 10) were analyzed.

To evaluate the 3D pore shape, the SEM images were compared to a calculated pore shape using the Wulff-construction for a fully faceted pore. The energies of the facets in the Wulff-construction were adjusted until the calculated shape fitted the observed shape [9]. The orientations of the facets, which form the pore shape, were obtained by both comparing their symmetry and their position in the pore shape. Further details on this procedure are published elsewhere [9].

Figs. 1, 2 and 3a–c show SEM images of pores in strontium titanate equilibrated at 1350 °C (Fig. 1), 1460 °C (Fig. 2) and 1600 °C (Fig. 3) doped with 0.2 at.% (a), 1.2 at.% (b) and 2.4 at.% Nb (c). The reconstructed pore shapes are shown in d–f, respectively. Since the orientation of the pores is different in each SEM image, the orientation of the corresponding facets is highlighted to ease comparison between observed and reconstructed shape. The shape with 0.6 at.% Nb dopant is not shown, as it is very similar to the neighboring dopant concentrations.

In general, all pores shown in Figs. 1, 2 and 3 have a similar shape: dominant facet orientations are {100}, {110} and {111}. Almost all pores show {310}-planes as well, but not at 1350 °C with 1.2 at.% Nb-dopant (Fig. 1b). The reason for the missing orientation in this particular case is not clear. Apart from that, the dataset shows a very consistent behavior: as reported for undoped strontium titanate [9], higher temperatures result in rounder pore shapes indicating a decreasing surface energy anisotropy. As can be seen in Figs. 1, 2 and 3, the same seems to be true for increasing dopant concentrations.

All observed pores show microfaceted (corrugated) areas as highlighted in orange in Figs. 1, 2 and 3. In general, their area fraction in the pore shape increases with increasing temperature and with increasing dopant concentration. Similar effects were published for undoped strontium titanate [9] and can appear in other materials as well [23,24]. While faceted and round areas can be part of the Wulff shape, microfaceted areas should not occur [15]. Their presence shows that there is a constraint on the pore shape [9]. In general, this constraint can be kinetic (pinning of the corner edges or metastable surface configurations) or geometric due to the existence of saddle-shaped surfaces [25] or quad junctions in the Wulff shape [26].

Independ of the cause of the microfaceted areas, we assume that there is no significant impact on the reconstructed pore shape, since for the reconstruction of each pore shape several pores were observed and the variance within this data is low (cf. Fig. 4). Accordingly the main planes in the pores ({100}, {110}, {111} and {310}) are most likely not influenced by the microfacetting. Thus the pore shapes shown in Figs. 1, 2 and 3 are assumed to be close to equilibrium.

The Wulff theorem states that the relative surface energy of a particular facet in the Wulff shape is proportional to its distance to the center of the Wulff shape [14,15]. Accordingly, if the Wulff shape is known, the relative surface energy of all visible facets is known. Note that this only holds for those orientations, which are included in the Wulff shape; for all other orientations only a minimum relative surface energy can be obtained ('missing orientations' [27]).

Given the reconstructed pore shapes from Figs. 1–3 and assuming that they are close to equilibrium, the relative surface energy of the four orientations {100}, {110}, {111} and {310} can be extracted. This data is shown in Fig. 4. All three datasets show a continuous decrease of the surface energy anisotropy with increasing dopant concentration. At 1350 °C, the difference between highest and lowest energy orientation in the Wulff shape (i.e. {111} and {100}) decreases from 22% to 9% with increasing dopant concentration. At 1460 °C it decreases from 15% to 7% and at 1600 °C from 12% to 7%. As discussed above, one inconsistency can be found: at 1350 °C and 1.2 at.% Nb {310} is missing and {111} has a very low surface energy. As expected, a comparison with Fig. 4a–c shows that the surface energy anisotropy decreases with increasing temperature as well [9].

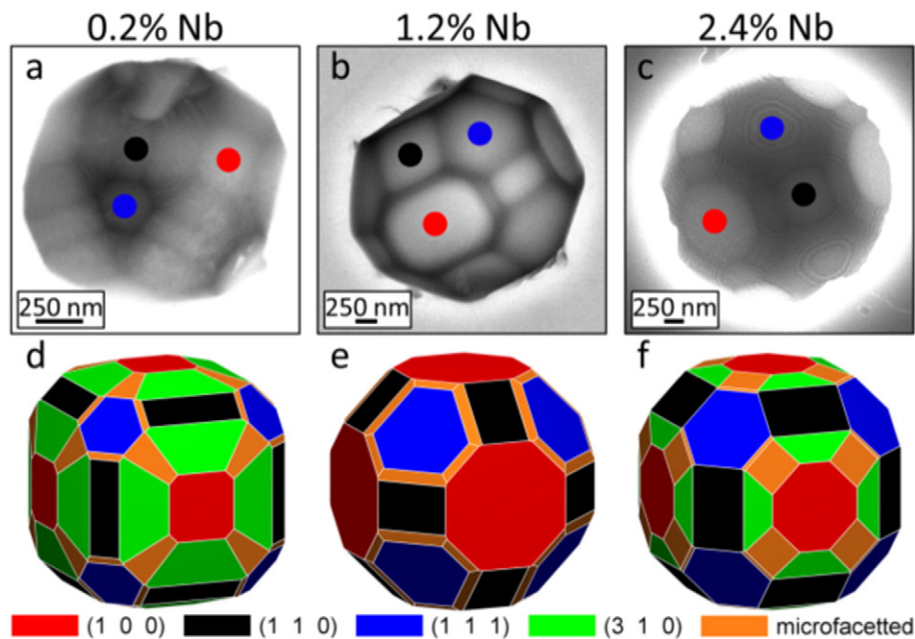


Fig. 1. SEM images of pores in strontium titanate annealed at 1350 °C in oxygen with 0.2 at.% (a), 1.2 at.% (b) and 2.4 at.% (c) Nb dopant. (d–f) Reconstructed pore shapes corresponding to a–c. Note that the orientation of pores is different in a–c. To guide the eye one facet with the orientation {100}, {110} and {111} is highlighted in a–c according to the color legend. (For interpretation of the references to color in this figure legend, the reader is referred to the web version of this article.)

Download English Version:

<https://daneshyari.com/en/article/5443702>

Download Persian Version:

<https://daneshyari.com/article/5443702>

[Daneshyari.com](https://daneshyari.com)