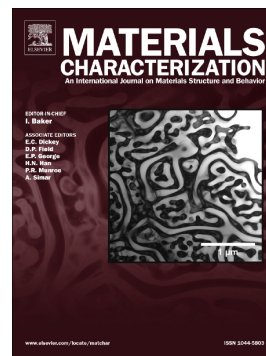


Accepted Manuscript

Elemental distribution within the long-period stacking ordered structure in a Mg-Gd-Zn-Mn alloy

Jiehua Li, Fredrik S. Hage, Xiangli Zhong, Yujuan Wu, Liming Peng, Sarah J. Haigh, Quentin M. Ramasse, Peter Schumacher



PII: S1044-5803(16)31402-4
DOI: doi: [10.1016/j.matchar.2017.05.008](https://doi.org/10.1016/j.matchar.2017.05.008)
Reference: MTL 8669

To appear in: *Materials Characterization*

Received date: 23 December 2016
Revised date: 7 May 2017
Accepted date: 9 May 2017

Please cite this article as: Jiehua Li, Fredrik S. Hage, Xiangli Zhong, Yujuan Wu, Liming Peng, Sarah J. Haigh, Quentin M. Ramasse, Peter Schumacher, Elemental distribution within the long-period stacking ordered structure in a Mg-Gd-Zn-Mn alloy, *Materials Characterization* (2017), doi: [10.1016/j.matchar.2017.05.008](https://doi.org/10.1016/j.matchar.2017.05.008)

This is a PDF file of an unedited manuscript that has been accepted for publication. As a service to our customers we are providing this early version of the manuscript. The manuscript will undergo copyediting, typesetting, and review of the resulting proof before it is published in its final form. Please note that during the production process errors may be discovered which could affect the content, and all legal disclaimers that apply to the journal pertain.

**Elemental distribution within the long-period stacking ordered
structure in a Mg-Gd-Zn-Mn alloy**

Jiehua Li^{1,2*}, Fredrik S. Hage³, Xiangli Zhong⁴, Yajuan Wu², Liming Peng², Sarah J.

Haigh⁴, Quentin M. Ramasse³, Peter Schumacher^{1,5}

¹ Institute of Casting Research, Montanuniversität Leoben, A-8700, Leoben, Austria

² National Engineering Research Center of Light Alloy Net Forming and State Key
Laboratory of Metal Matrix Composites, Shanghai Jiaotong University, 200240, Shanghai,

PR China

³ SuperSTEM Laboratory, SciTech Daresbury Campus, Keckwick Lane, Daresbury, WA4

4AD, UK.

⁴ School of Materials, The University of Manchester, Manchester M13 9PL, England, UK

⁵ Austrian Foundry Research Institute, Leoben, Austria

*Corresponding Author:

Post address: Institute of Casting Research, Montanuniversität Leoben, A-8700, Leoben,
Austria.

Tel.: +43-3842-402-3304; Fax: +43-3842-402-3302.

Email address: jie-hua.li@hotmail.com (Jiehua Li)

Download English Version:

<https://daneshyari.com/en/article/5454866>

Download Persian Version:

<https://daneshyari.com/article/5454866>

[Daneshyari.com](https://daneshyari.com)