

Accepted Manuscript

The Adaptive Computer-aided Diagnosis System based on Tumor Sizes for the Classification of Breast Tumors detected at Screening Ultrasound

Woo Kyung Moon, I-Ling Chen, Jung Min Chang, Sung Ui Shin, Chung-Ming Lo, Ruey-Feng Chang

PII: S0041-624X(16)30426-7

DOI: <http://dx.doi.org/10.1016/j.ultras.2016.12.017>

Reference: ULTRAS 5446

To appear in: *Ultrasonics*

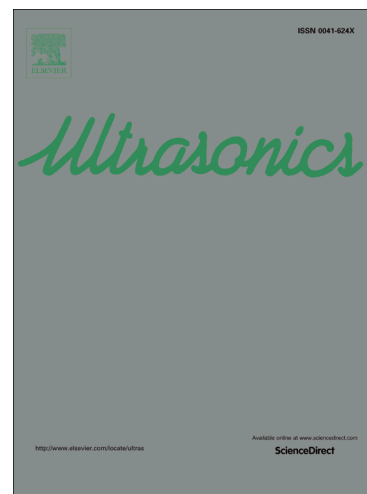
Received Date: 17 June 2016

Revised Date: 6 December 2016

Accepted Date: 26 December 2016

Please cite this article as: W. Kyung Moon, I-L. Chen, J. Min Chang, S. Ui Shin, C-M. Lo, R-F. Chang, The Adaptive Computer-aided Diagnosis System based on Tumor Sizes for the Classification of Breast Tumors detected at Screening Ultrasound, *Ultrasonics* (2016), doi: <http://dx.doi.org/10.1016/j.ultras.2016.12.017>

This is a PDF file of an unedited manuscript that has been accepted for publication. As a service to our customers we are providing this early version of the manuscript. The manuscript will undergo copyediting, typesetting, and review of the resulting proof before it is published in its final form. Please note that during the production process errors may be discovered which could affect the content, and all legal disclaimers that apply to the journal pertain.



The Adaptive Computer-aided Diagnosis System based on Tumor Sizes for the Classification of Breast Tumors detected at Screening Ultrasound

Woo Kyung Moon¹, I-Ling Chen², Jung Min Chang¹, Sung Ui Shin¹,
Chung-Ming Lo^{2,3*}, and Ruey-Feng Chang^{2,4*}

¹Department of Radiology, Seoul National University College of Medicine and Seoul National University Hospital, Seoul, Korea

²Department of Computer Science and Information Engineering, National Taiwan University, Taipei, Taiwan

³Graduate Institute of Biomedical Informatics, College of Medical Science and Technology, Taipei Medical University, Taipei, Taiwan

⁴Graduate Institute of Biomedical Electronics and Bioinformatics, National Taiwan University, Taipei, Taiwan

* Corresponding Author:

Professor Chung-Ming Lo

Graduate Institute of Biomedical Informatics, College of Medical Science and Technology, Taipei Medical University, Taipei, Taiwan 11031, R.O.C.

Telephone: 886-2-2736-1661 ext. 3345

Fax: 886-2-2739-2914

E-mail: buddylo@tmu.edu.tw

Professor Ruey-Feng Chang

Department of Computer Science and Information Engineering, National Taiwan University, Taipei, Taiwan 10617, R.O.C.

Telephone: 886-2-33661503

Fax: 886-2-23628167

E-mail: rfchang@csie.ntu.edu.tw

Download English Version:

<https://daneshyari.com/en/article/5485364>

Download Persian Version:

<https://daneshyari.com/article/5485364>

[Daneshyari.com](https://daneshyari.com)