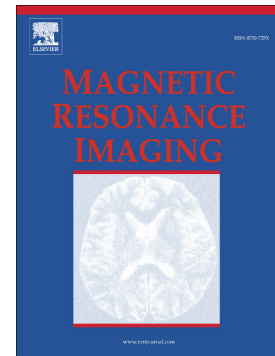


Accepted Manuscript

Test-retest reliability of cerebral blood flow in healthy individuals using arterial spin labeling: Findings from the EMBARC study

Jorge R.C. Almeida, Tsafrir Greenberg, Hanzhang Lu, Henry W. Chase, Jay Fournier, Crystal M. Cooper, Thilo Deckersbach, Phil Adams, Thomas Carmody, Mauricio Fava, Benji Kurian, Patrick J. McGrath, Melvin McInnis, Maria A. Oquendo, Ramin Parsey, Myrna Weissman, Madhukar Trivedi, Mary L. Phillips



PII: S0730-725X(17)30177-7
DOI: doi: [10.1016/j.mri.2017.09.004](https://doi.org/10.1016/j.mri.2017.09.004)
Reference: MRI 8830

To appear in:

Received date: 26 May 2016
Revised date: 17 March 2017
Accepted date: 1 September 2017

Please cite this article as: Jorge R.C. Almeida, Tsafrir Greenberg, Hanzhang Lu, Henry W. Chase, Jay Fournier, Crystal M. Cooper, Thilo Deckersbach, Phil Adams, Thomas Carmody, Mauricio Fava, Benji Kurian, Patrick J. McGrath, Melvin McInnis, Maria A. Oquendo, Ramin Parsey, Myrna Weissman, Madhukar Trivedi, Mary L. Phillips, Test-retest reliability of cerebral blood flow in healthy individuals using arterial spin labeling: Findings from the EMBARC study, (2017), doi: [10.1016/j.mri.2017.09.004](https://doi.org/10.1016/j.mri.2017.09.004)

This is a PDF file of an unedited manuscript that has been accepted for publication. As a service to our customers we are providing this early version of the manuscript. The manuscript will undergo copyediting, typesetting, and review of the resulting proof before it is published in its final form. Please note that during the production process errors may be discovered which could affect the content, and all legal disclaimers that apply to the journal pertain.

Word Count: Abstract: 234
 Main Text: 3824
 Tables: 2
 Figures: 2
 Supplemental Tables: 2
 Supplemental Figure: 1

Test-retest reliability of cerebral blood flow in healthy individuals using arterial spin labeling: Findings from the EMBARC study

Jorge R. C. Almeida^{a,b}, Tsafir Greenberg^a, Hanzhang Lu^c, Henry W. Chase^a, Jay Fournier^a, Crystal M. Cooper^c, Thilo Deckersbach^d, Phil Adams^e, Thomas Carmody^c, Mauricio Fava^d, Benji Kurian^c, Patrick J. McGrath^e, Melvin McInnis^f, Maria A. Oquendo^e, Ramin Parsey^g, Myrna Weissman^e, Madhukar Trivedi^c, Mary L. Phillips^a

a. Department of Psychiatry, University of Pittsburgh School of Medicine, Pittsburgh, PA 1521

b. Department of Psychiatry, Brown University School of Medicine, Providence, RI 02906

c. Department of Psychiatry, University of Texas Southwestern Medical Center, Dallas, TX 75235

d. Department of Psychiatry, Massachusetts General Hospital, Boston, MA 02114

e. Department of Psychiatry, Columbia University College of Physicians and Surgeons and the New York State Psychiatric Institute, New York, NY 10032

f. Department of Psychiatry, University of Michigan School of Medicine, Ann Arbor, MI 48109

g. Departments of Psychiatry and Behavioral Science & Radiology, Stony Brook University, Stony Brook, NY 11794

Corresponding author: Jorge Almeida
 Email: almeidajorge263@gmail.com
 Present Address: Brown University School of Medicine
 Department of Psychiatry and Human Behavior
 345 Blackstone Blvd.
 Providence, RI 02906
 USA

Download English Version:

<https://daneshyari.com/en/article/5491365>

Download Persian Version:

<https://daneshyari.com/article/5491365>

[Daneshyari.com](https://daneshyari.com)