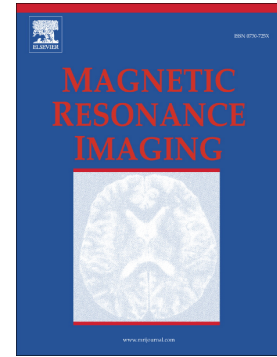


Accepted Manuscript

Assessment of MRI issues for a new cerebral spinal fluid shunt, gravitational valve (GV)

Daniel Moghtader, Hans-Joachim Crawack, Christoph Miethke, Zinah Dörlemann, Frank G. Shellock



PII: S0730-725X(17)30131-5
DOI: doi: [10.1016/j.mri.2017.07.018](https://doi.org/10.1016/j.mri.2017.07.018)
Reference: MRI 8805

To appear in:

Received date: 19 May 2017
Revised date: ####REVISEDDATE###
Accepted date: 13 July 2017

Please cite this article as: Daniel Moghtader, Hans-Joachim Crawack, Christoph Miethke, Zinah Dörlemann, Frank G. Shellock, Assessment of MRI issues for a new cerebral spinal fluid shunt, gravitational valve (GV), (2017), doi: [10.1016/j.mri.2017.07.018](https://doi.org/10.1016/j.mri.2017.07.018)

This is a PDF file of an unedited manuscript that has been accepted for publication. As a service to our customers we are providing this early version of the manuscript. The manuscript will undergo copyediting, typesetting, and review of the resulting proof before it is published in its final form. Please note that during the production process errors may be discovered which could affect the content, and all legal disclaimers that apply to the journal pertain.

Original Research**Assessment of MRI Issues for a New Cerebral Spinal Fluid Shunt, Gravitational Valve (GV)**

Daniel Moghtader
 Department of Chemistry and Biochemistry
 Loyola Marymount University
 1 Loyola Marymount University Dr.
 Los Angeles, CA 90045
 danielmoghtader@gmail.com

Hans-Joachim Crawack, Ph.D.
 CHRISTOPH MIETHKE GMBH & CO. KG
 Ulanenweg 2
 D-14469 Potsdam, Germany
 hansjoachim.crawack@miethke.com

Christoph Miethke, Dipl-Ing
 CHRISTOPH MIETHKE GMBH & CO. KG
 Ulanenweg 2
 D-14469 Potsdam, Germany
 Christoph.miethke@miethke.com

Zinah Dörlemann, Dipl-Ing
 CHRISTOPH MIETHKE GMBH & CO. KG
 Ulanenweg 2
 D-14469 Potsdam, Germany
 Zinah.Doerlemann@miethke.com

Frank G. Shellock, Ph.D.
 Departments of Radiology and Medicine
 Keck School of Medicine, University of Southern California
 7751 Veragua Dr.
 Playa Del Rey, CA 90293
 frank.shellock@mrifafety.com

Address all correspondence to:

Frank G. Shellock, Ph.D.
 University of Southern California
 7751 Veragua Dr.
 Playa Del Rey, CA 90293
 frank.shellock@mrifafety.com

Download English Version:

<https://daneshyari.com/en/article/5491423>

Download Persian Version:

<https://daneshyari.com/article/5491423>

[Daneshyari.com](https://daneshyari.com)