

Accepted Manuscript

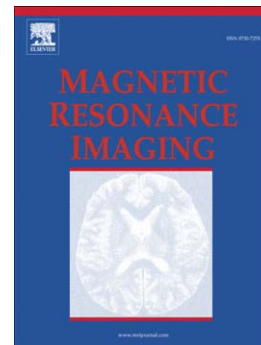
Multi-Phase Passband Balanced SSFP fMRI with 50 ms Sampling Rate at 7 Tesla Enables High Precision in Resolving 100 ms Neuronal Events

Zhongwei Chen, Rong Xue, Peng Zhang, Kaibao Sun, Zhentao Zuo, Jing An, Jing Chen, Sheng He, Lin Chen, Danny J.J. Wang

PII: S0730-725X(16)30118-7
DOI: doi: [10.1016/j.mri.2016.08.013](https://doi.org/10.1016/j.mri.2016.08.013)
Reference: MRI 8605

To appear in: *Magnetic Resonance Imaging*

Received date: 1 July 2016
Revised date: 9 August 2016
Accepted date: 20 August 2016



Please cite this article as: Chen Zhongwei, Xue Rong, Zhang Peng, Sun Kaibao, Zuo Zhentao, An Jing, Chen Jing, He Sheng, Chen Lin, Wang Danny J.J., Multi-Phase Passband Balanced SSFP fMRI with 50 ms Sampling Rate at 7 Tesla Enables High Precision in Resolving 100 ms Neuronal Events, *Magnetic Resonance Imaging* (2016), doi: [10.1016/j.mri.2016.08.013](https://doi.org/10.1016/j.mri.2016.08.013)

This is a PDF file of an unedited manuscript that has been accepted for publication. As a service to our customers we are providing this early version of the manuscript. The manuscript will undergo copyediting, typesetting, and review of the resulting proof before it is published in its final form. Please note that during the production process errors may be discovered which could affect the content, and all legal disclaimers that apply to the journal pertain.

Multi-Phase Passband Balanced SSFP fMRI with 50ms Sampling Rate at 7 Tesla Enables High Precision in Resolving 100ms Neuronal Events

Zhongwei Chen^{a,b,c,d}, Rong Xue^{a,b,c,d,e,*}, Peng Zhang^{a,b,c,d}, Kaibao Sun^{a,b,c,d}, Zhentao Zuo^{a,b,c,d},
Jing An^f, Jing Chen^{a,c,d}, Sheng He^{a,b,c,d,g}, Lin Chen^{a,b,c,d,e*} and Danny JJ Wang^{c,d,h,i}

^a State Key Laboratory of Brain and Cognitive Science, Beijing MRI Center for Brain Research, Institute of Biophysics, Chinese Academy of Sciences, Beijing, China

^b University of Chinese Academy of Sciences, Beijing 100049, China

^c UCLA-Beijing Joint Center for Advanced Brain Imaging, Beijing, China

^d UCLA-Beijing Joint Center for Advanced Brain Imaging, Los Angeles, California, United States

^e Beijing Institute for Brain Disorders, Beijing 100053, China

^f Siemens Shenzhen Magnetic Resonance Ltd, Shenzhen, China

^g Department of Psychology, University of Minnesota, Minneapolis, Minnesota 55455, USA

^h Laboratory of FMRI Technology (LOFT), Department of Neurology, University of California Los Angeles, Los Angeles, California, United States

ⁱ Stevens Neuroimaging and Informatics Institute, University of Southern California, Los Angeles, California, United States

* Correspondence to: Rong Xue or Lin Chen, State Key Lab. of Brain and Cognitive Science, Beijing MRI Center for Brain Research, Institute of Biophysics, Chinese Academy of Sciences, 15 Datun Road, Chaoyang District, Beijing 100101, China. Email: rxue@bcslab.ibp.ac.cn or linchen@bcslab.ibp.ac.cn

Download English Version:

<https://daneshyari.com/en/article/5491500>

Download Persian Version:

<https://daneshyari.com/article/5491500>

[Daneshyari.com](https://daneshyari.com)