

Accepted Manuscript

Non-Contrast-Enhanced MR Angiography in the Diagnosis of Budd-Chiari Syndrome (BCS) Compared with Digital Subtraction Angiography (DSA): Preliminary Results

Chun Yang, Ceng Li, Mengsu Zeng, Xin Lu, Jingjing Li, Jiali Wang, Muhammad Umair Sami, Kai Xu

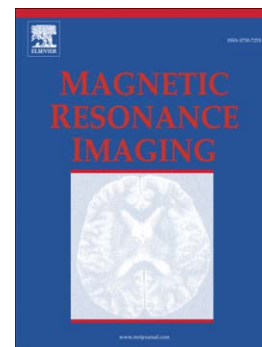
PII: S0730-725X(16)30153-9
DOI: doi: [10.1016/j.mri.2016.10.006](https://doi.org/10.1016/j.mri.2016.10.006)
Reference: MRI 8628

To appear in: *Magnetic Resonance Imaging*

Received date: 12 June 2016
Revised date: 10 September 2016
Accepted date: 5 October 2016

Please cite this article as: Yang Chun, Li Ceng, Zeng Mengsu, Lu Xin, Li Jingjing, Wang Jiali, Sami Muhammad Umair, Xu Kai, Non-Contrast-Enhanced MR Angiography in the Diagnosis of Budd-Chiari Syndrome (BCS) Compared with Digital Subtraction Angiography (DSA): Preliminary Results, *Magnetic Resonance Imaging* (2016), doi: [10.1016/j.mri.2016.10.006](https://doi.org/10.1016/j.mri.2016.10.006)

This is a PDF file of an unedited manuscript that has been accepted for publication. As a service to our customers we are providing this early version of the manuscript. The manuscript will undergo copyediting, typesetting, and review of the resulting proof before it is published in its final form. Please note that during the production process errors may be discovered which could affect the content, and all legal disclaimers that apply to the journal pertain.



Non-Contrast-Enhanced MR Angiography in the Diagnosis of Budd-Chiari Syndrome (BCS) Compared with Digital Subtraction Angiography (DSA): Preliminary Results

Chun Yang^{1,3*}, Ceng Li^{2,3*}, Mengsu Zeng¹, Xin Lu³, Jingjing Li³, Jiali Wang³, Muhammad Umair Sami³, Kai Xu³

1. Department of Radiology, Zhongshan Hospital, Fudan University, Shanghai, 200032, P.R. China
2. Department of Radiology, The Third Hospital of Xuzhou City, Xuzhou, P.R. China
3. Department of Radiology, Affiliated Hospital of Xuzhou Medical College, Xuzhou, P.R. China

* C.Y. and C. L. contributed equally to this work

Corresponding author:

Kai Xu

Department of Radiology

Affiliated Hospital of Xuzhou Medical College

99 West Huai-hai Road, Xuzhou, Jiangsu, 221002, P.R. China

E-mail: xkpaper@163.com

Abstract

Non-CE MRA techniques (true steady-state free-precession, SSFP) have been used effectively for the selective visualization of the portal venous system and inferior vena cava. Budd-Chiari Syndrome (BCS) encompasses a number of conditions that cause the obstruction of the hepatic outflow tract from the small

Download English Version:

<https://daneshyari.com/en/article/5491540>

Download Persian Version:

<https://daneshyari.com/article/5491540>

[Daneshyari.com](https://daneshyari.com)