

Accepted Manuscript

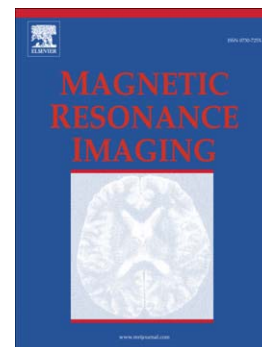
Comparison of Compressed Sensing Diffusion Spectrum Imaging and Diffusion Tensor Imaging in Patients with Intracranial Masses

Robert J Young, Ek T Tan, Kyung K Peck, Mehrnaz Jenabi, Sasan Karimi, Nicole Brennan, Jennifer Rubel, John Lyo, Wei Ji Shi, Zhigang Zhang, Marcel Prastawa, Xiaofeng Liu, Jonathan I Sperl, Robin Fatovic, Luca Marinelli, Andrei I Holodny

PII: S0730-725X(16)30148-5
DOI: doi: [10.1016/j.mri.2016.10.001](https://doi.org/10.1016/j.mri.2016.10.001)
Reference: MRI 8623

To appear in: *Magnetic Resonance Imaging*

Received date: 18 May 2016
Revised date: 31 August 2016
Accepted date: 5 October 2016



Please cite this article as: Young Robert J, Tan Ek T, Peck Kyung K, Jenabi Mehrnaz, Karimi Sasan, Brennan Nicole, Rubel Jennifer, Lyo John, Shi Wei Ji, Zhang Zhigang, Prastawa Marcel, Liu Xiaofeng, Sperl Jonathan I, Fatovic Robin, Marinelli Luca, Holodny Andrei I, Comparison of Compressed Sensing Diffusion Spectrum Imaging and Diffusion Tensor Imaging in Patients with Intracranial Masses, *Magnetic Resonance Imaging* (2016), doi: [10.1016/j.mri.2016.10.001](https://doi.org/10.1016/j.mri.2016.10.001)

This is a PDF file of an unedited manuscript that has been accepted for publication. As a service to our customers we are providing this early version of the manuscript. The manuscript will undergo copyediting, typesetting, and review of the resulting proof before it is published in its final form. Please note that during the production process errors may be discovered which could affect the content, and all legal disclaimers that apply to the journal pertain.

Comparison of Compressed Sensing Diffusion Spectrum Imaging and Diffusion Tensor Imaging in

Patients with Intracranial Masses

Robert J Young MD*; Ek T Tan PhD*; Kyung K Peck PhD; Mehrnaz Jenabi MSc; Sasan Karimi MD; Nicole Brennan; Jennifer Rubel MS; John Lyo MD; Weiji Shi MS; Zhigang Zhang PhD; Marcel Prastawa, PhD; Xiaofeng Liu PhD; Jonathan I Sperl PhD; Robin Fatovic BS; Luca Marinelli PhD Andrei I Holodny, MD

*These authors contributed equally as co-first authors.

From the Departments of Radiology (RJY, KKP, MJ, NB, JR, SK, JL, RF, AIH), Medical Physics (KKP), Epidemiology & Biostatistics (WS, ZZ), and the Brain Tumor Center (RJY, AIH), Memorial Sloan Kettering Cancer Center; and the Department of Diagnostics, Imaging and Biomedical Technologies, GE Global Research (ETT, MP, XL, JIS, LM)

Corresponding author:

Robert J Young, MD
Memorial Sloan Kettering Cancer Center
Neuroradiology Service, Department of Radiology
1275 York Avenue
New York, New York 10065
Office: 212-639-8196
Fax: 917-432-2345
Email: youngrobert@gmail.com

Acknowledgements: The authors are grateful for the expert editorial guidance provided by Ms. Joanne Chin and Ms. Ada Muellner from the Department of Radiology, Memorial Sloan Kettering Cancer Center.

Grant Support: RJY was supported by a Fujifilm Medical Systems / Radiological Society of North America Research Seed Grant RSD1111. This research was supported in part through the NIH/NCI Cancer Center Core Support Grant P30 CA008748.

Running Title: CS-DSI versus DTI

Download English Version:

<https://daneshyari.com/en/article/5491542>

Download Persian Version:

<https://daneshyari.com/article/5491542>

[Daneshyari.com](https://daneshyari.com)