

Accepted Manuscript

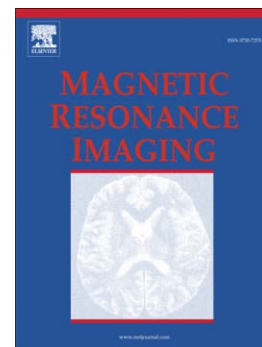
Intravoxel incoherent motion diffusion-weighted imaging as an adjunct to dynamic contrast-enhanced MRI to improve accuracy of the differential diagnosis of benign and malignant breast lesions

Dejing Ma, Feng Lu, Xuexue Zou, Hu Zhang, Yangyang Li, Lin Zhang, Liang Chen, Dongjing Qin, Bin Wang

PII: S0730-725X(16)30152-7
DOI: doi: [10.1016/j.mri.2016.10.005](https://doi.org/10.1016/j.mri.2016.10.005)
Reference: MRI 8627

To appear in: *Magnetic Resonance Imaging*

Received date: 26 May 2016
Revised date: 29 August 2016
Accepted date: 5 October 2016



Please cite this article as: Ma Dejing, Lu Feng, Zou Xuexue, Zhang Hu, Li Yangyang, Zhang Lin, Chen Liang, Qin Dongjing, Wang Bin, Intravoxel incoherent motion diffusion-weighted imaging as an adjunct to dynamic contrast-enhanced MRI to improve accuracy of the differential diagnosis of benign and malignant breast lesions, *Magnetic Resonance Imaging* (2016), doi: [10.1016/j.mri.2016.10.005](https://doi.org/10.1016/j.mri.2016.10.005)

This is a PDF file of an unedited manuscript that has been accepted for publication. As a service to our customers we are providing this early version of the manuscript. The manuscript will undergo copyediting, typesetting, and review of the resulting proof before it is published in its final form. Please note that during the production process errors may be discovered which could affect the content, and all legal disclaimers that apply to the journal pertain.

**Intravoxel incoherent motion diffusion-weighted imaging as an adjunct to
dynamic contrast-enhanced MRI to improve accuracy of the differential
diagnosis of benign and malignant breast lesions**

Dejing Ma^{1,2}, Feng Lu³, Xuexue Zou², Hu Zhang², Yangyang Li⁴, Lin Zhang², Liang
Chen², Dongjing Qin², Bin Wang^{5*}

¹Shandong Medical Imaging Research Institute, Shandong University, Jinan,
Shandong, 250021, China

²Department of Radiology, Affiliated Hospital of Binzhou Medical University,
Binzhou, Shandong, 256603, China

³Respiratory department, Affiliated Hospital of Binzhou Medical University, Binzhou,
Shandong, 256603, China

⁴Department of Pathology, Affiliated Hospital of Binzhou Medical University,
Binzhou, Shandong, 256603, China

⁵Medical Imaging Research Institute, Binzhou Medical University, Yantai, Shandong,
264003, China

***Corresponding Author:** Bin Wang

Medical Imaging Research Institute, Binzhou Medical University, No. 346 Guanhai
Road, Yantai, Shandong, 264003, China

Download English Version:

<https://daneshyari.com/en/article/5491557>

Download Persian Version:

<https://daneshyari.com/article/5491557>

[Daneshyari.com](https://daneshyari.com)