

Accepted Manuscript

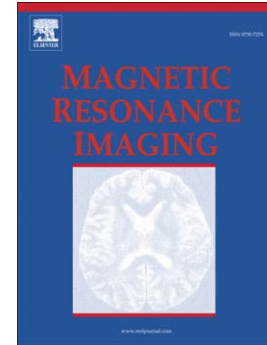
The natural history of streptozotocin-stimulated non-alcoholic steatohepatitis mice followed by Gd-EOB-DTPA-enhanced MRI: Comparison with simple steatosis mice

Hiroyuki Akai, Shigeru Kiryu, Yasunori Ohta, Koichiro Yasaka, Yoshiyasu Nakano, Yusuke Inoue, Kuni Ohtomo

PII: S0730-725X(16)30278-8
DOI: doi:[10.1016/j.mri.2016.12.027](https://doi.org/10.1016/j.mri.2016.12.027)
Reference: MRI 8706

To appear in: *Magnetic Resonance Imaging*

Received date: 15 October 2016
Revised date: 29 December 2016
Accepted date: 30 December 2016



Please cite this article as: Akai Hiroyuki, Kiryu Shigeru, Ohta Yasunori, Yasaka Koichiro, Nakano Yoshiyasu, Inoue Yusuke, Ohtomo Kuni, The natural history of streptozotocin-stimulated non-alcoholic steatohepatitis mice followed by Gd-EOB-DTPA-enhanced MRI: Comparison with simple steatosis mice, *Magnetic Resonance Imaging* (2017), doi:[10.1016/j.mri.2016.12.027](https://doi.org/10.1016/j.mri.2016.12.027)

This is a PDF file of an unedited manuscript that has been accepted for publication. As a service to our customers we are providing this early version of the manuscript. The manuscript will undergo copyediting, typesetting, and review of the resulting proof before it is published in its final form. Please note that during the production process errors may be discovered which could affect the content, and all legal disclaimers that apply to the journal pertain.

Title Page Original Research**The natural history of streptozotocin-stimulated non-alcoholic steatohepatitis mice followed by Gd-EOB-DTPA-enhanced MRI: comparison with simple steatosis mice**

Hiroyuki Akai MD PhD¹, Shigeru Kiryu MD PhD¹, Yasunori Ohta MD PhD², Koichiro Yasaka MD PhD¹, Yoshiyasu Nakano MD³, Yusuke Inoue MD PhD⁴, Kuni Ohtomo MD PhD³

¹ Department of Radiology, Institute of Medical Science, University of Tokyo, 4-6-1 Shirokanedai, Minato-ku, Tokyo 108-8639, Japan

² Department of Pathology, Institute of Medical Science, University of Tokyo, 4-6-1 Shirokanedai, Minato-ku, Tokyo 108-8639, Japan

³ Department of Radiology, Graduate School of Medicine, University of Tokyo, 7-3-1 Hongo, Bunkyo-ku, Tokyo 113-8655, Japan

⁴ Department of Diagnostic Radiology, Kitasato University School of Medicine, Sagamihara, Kanagawa, Japan

Corresponding author: Dr. S. Kiryu

Current address: Department of Radiology, Institute of Medical Science, University of Tokyo, 4-6-1 Shirokanedai, Minato-ku, Tokyo 108-8639, Japan

Tel: +81 3-3443-8111

Fax: +81 3-5449-5746

Email: kiryu-tyk@umin.ac.jp

Download English Version:

<https://daneshyari.com/en/article/5491590>

Download Persian Version:

<https://daneshyari.com/article/5491590>

[Daneshyari.com](https://daneshyari.com)