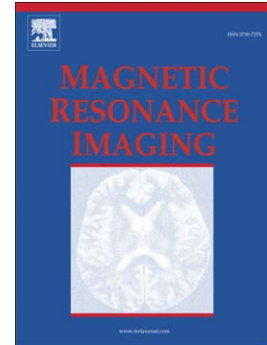


## Accepted Manuscript

Cardiac magnetic resonance tissue tracking in right ventricle: feasibility and normal values

Vien T Truong, Komal S Safdar, Dinesh K Kalra, Xuexin Gao, Stephanie Ambach, Michael D Taylor, Ryan Moore, Robin J Taylor, Joshua Germann, Olga Toro-Salazar, John L Jefferies, Cheryl Bartone, Subha V Raman, Tam Ngo, Wojciech Mazur



PII: S0730-725X(17)30007-3  
DOI: doi:[10.1016/j.mri.2017.01.007](https://doi.org/10.1016/j.mri.2017.01.007)  
Reference: MRI 8714

To appear in: *Magnetic Resonance Imaging*

Received date: 26 March 2016  
Revised date: 6 January 2017  
Accepted date: 7 January 2017

Please cite this article as: Truong Vien T, Safdar Komal S, Kalra Dinesh K, Gao Xuexin, Ambach Stephanie, Taylor Michael D, Moore Ryan, Taylor Robin J, Germann Joshua, Toro-Salazar Olga, Jefferies John L, Bartone Cheryl, Raman Subha V, Ngo Tam, Mazur Wojciech, Cardiac magnetic resonance tissue tracking in right ventricle: feasibility and normal values, *Magnetic Resonance Imaging* (2017), doi:[10.1016/j.mri.2017.01.007](https://doi.org/10.1016/j.mri.2017.01.007)

This is a PDF file of an unedited manuscript that has been accepted for publication. As a service to our customers we are providing this early version of the manuscript. The manuscript will undergo copyediting, typesetting, and review of the resulting proof before it is published in its final form. Please note that during the production process errors may be discovered which could affect the content, and all legal disclaimers that apply to the journal pertain.

**Cardiac magnetic resonance tissue tracking in right ventricle: feasibility and normal values**

Vien T Truong MD<sup>1,9\*</sup>, Komal S Safdar BS<sup>1\*</sup>, Dinesh K Kalra MD<sup>2</sup>, Xuexin Gao<sup>3</sup>, Stephanie Ambach<sup>4</sup>, Michael D Taylor MD<sup>5</sup>, Ryan Moore MD<sup>5</sup>, Robin J Taylor MD<sup>6</sup>, Joshua Germann<sup>5</sup>, Olga Toro-Salazar MD<sup>7</sup>, John L Jefferies MD<sup>5</sup>, Cheryl Bartone<sup>1</sup>, Subha V Raman MD<sup>8</sup>, Tam Ngo MD<sup>9</sup>, Wojciech Mazur MD<sup>1</sup>

\*These authors contributed equally

(1) The Christ Hospital Health Network, Cincinnati, OH, USA. (2) Rush University medical Center, Chicago, IL, USA. (3) Circle Cardiovascular Imaging Inc, Calgary, Canada. (4) The University of Cincinnati, College of Allied Health Sciences, Cincinnati, OH, USA. (5) Cincinnati Children's Hospital Medical Center, Cincinnati, OH, USA. (6) Centre for Cardiovascular Sciences University of Birmingham, Edgbaston, Birmingham, United Kingdom. (7) Connecticut Children's Medical Center, Hartford, CT, USA. (8) The Ohio State University Medical Center, Columbus, OH, USA. (9) Pham Ngoc Thach University of Medicine, Ho Chi Minh City, Vietnam.

**Corresponding Author:**

Wojciech Mazur  
2139 Auburn Avenue  
Cincinnati, Ohio 45219  
Phone # 513-721-881  
Fax # 513-721-8227  
mazurw@ohioheart.org

**Acknowledgments:** None

**Grant Support:** None

**Running Title:** RV Strain Using Tissue Tracking

Download English Version:

<https://daneshyari.com/en/article/5491597>

Download Persian Version:

<https://daneshyari.com/article/5491597>

[Daneshyari.com](https://daneshyari.com)