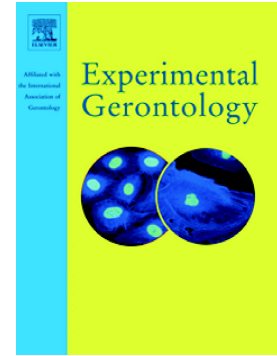


Accepted Manuscript

Physical performance and movement-evoked pain profiles in community-dwelling individuals at risk for knee osteoarthritis

Yenisel Cruz-Almeida



PII: S0531-5565(17)30495-3
DOI: doi: [10.1016/j.exger.2017.08.026](https://doi.org/10.1016/j.exger.2017.08.026)
Reference: EXG 10133

To appear in: *Experimental Gerontology*

Received date: 26 June 2017
Revised date: 7 August 2017
Accepted date: 18 August 2017

Please cite this article as: Yenisel Cruz-Almeida , Physical performance and movement-evoked pain profiles in community-dwelling individuals at risk for knee osteoarthritis, *Experimental Gerontology* (2017), doi: [10.1016/j.exger.2017.08.026](https://doi.org/10.1016/j.exger.2017.08.026)

This is a PDF file of an unedited manuscript that has been accepted for publication. As a service to our customers we are providing this early version of the manuscript. The manuscript will undergo copyediting, typesetting, and review of the resulting proof before it is published in its final form. Please note that during the production process errors may be discovered which could affect the content, and all legal disclaimers that apply to the journal pertain.

**Physical Performance and Movement-Evoked Pain Profiles in Community-Dwelling
Individuals at risk for Knee Osteoarthritis**

Affiliations

1. Pain Research & Intervention Center of Excellence, University of Florida
2. Institute on Aging, University of Florida
3. Cognitive Aging & Memory Clinical Translational Research Program, University of Florida
4. Department of Aging & Geriatric Research, College of Medicine, University of Florida
5. Department of Neuroscience, College of Medicine, University of Florida
6. Department of Community Dentistry and Behavioral Science, College of Dentistry, University of Florida
7. College of Nursing & Health Innovation, Arizona State University
8. Department of Psychology, University of Alabama at Birmingham
9. Pain Research Center, Cincinnati Children's Hospital Medical Center
10. Division of Clinical Immunology and Rheumatology, University of Alabama at Birmingham, Birmingham, AL, USA
11. Department of Medicine, University of Florida, Gainesville, FL, USA
12. Departments of Biostatistics and Medicine and Rheumatology, University of Alabama at Birmingham, Birmingham, AL, USA.

Corresponding Author:

**Yenisel Cruz-Almeida, MSPH, PhD
Institute on Aging, College of Medicine,
University of Florida, Gainesville, FL**

Download English Version:

<https://daneshyari.com/en/article/5501262>

Download Persian Version:

<https://daneshyari.com/article/5501262>

[Daneshyari.com](https://daneshyari.com)