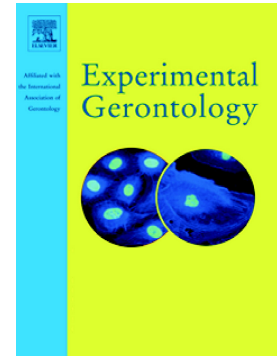


Accepted Manuscript

Regulatory effects of galanin system on development of several age-related chronic diseases

Penghua Fang, Mei Yu, Dang Wan, Lei Zhang, Long Han, Zhongqi Shen, Mingyi Shi, Yan Zhu, Zhenwen Zhang, Ping Bo



PII: S0531-5565(17)30071-2
DOI: doi: [10.1016/j.exger.2017.04.009](https://doi.org/10.1016/j.exger.2017.04.009)
Reference: EXG 10040

To appear in: *Experimental Gerontology*

Received date: 25 January 2017
Revised date: 21 April 2017
Accepted date: 24 April 2017

Please cite this article as: Penghua Fang, Mei Yu, Dang Wan, Lei Zhang, Long Han, Zhongqi Shen, Mingyi Shi, Yan Zhu, Zhenwen Zhang, Ping Bo , Regulatory effects of galanin system on development of several age-related chronic diseases. The address for the corresponding author was captured as affiliation for all authors. Please check if appropriate. *Exg*(2016), doi: [10.1016/j.exger.2017.04.009](https://doi.org/10.1016/j.exger.2017.04.009)

This is a PDF file of an unedited manuscript that has been accepted for publication. As a service to our customers we are providing this early version of the manuscript. The manuscript will undergo copyediting, typesetting, and review of the resulting proof before it is published in its final form. Please note that during the production process errors may be discovered which could affect the content, and all legal disclaimers that apply to the journal pertain.

Regulatory effects of galanin system on development of several age-related chronic
diseases

Penghua Fang^{a,b,c}, Mei Yu^a, Dang Wan^c, Lei Zhang^c, Long Han^a, Zhongqi Shen^b, Mingyi Shi^{b,c}, Yan Zhu^b, Zhenwen Zhang^{b,*}, Ping Bo^{b,c,*},

^aLaboratory of Gerontology, Nanjing University of Chinese Medicine Hanlin College, Taizhou, China, 225300;

^bDepartment of Endocrinology, Clinical Medical College, Yangzhou University, Yangzhou, China 225001;

^cJiangsu Key Laboratory of Integrated Traditional Chinese and Western Medicine for Prevention and Treatment of Age-related Diseases, Medical College, Yangzhou University, Yangzhou, China 225001;

*Corresponding author: Department of Endocrinology, Clinical Medical College, Yangzhou University, Nantong road 98#, Yangzhou, Jiangsu, China. Tel: +86-0514-87978880; Fax: +86-514-87341733; Email: physiolpep@sina.cn

Short running title: Galanin and age-related diseases

Download English Version:

<https://daneshyari.com/en/article/5501290>

Download Persian Version:

<https://daneshyari.com/article/5501290>

[Daneshyari.com](https://daneshyari.com)