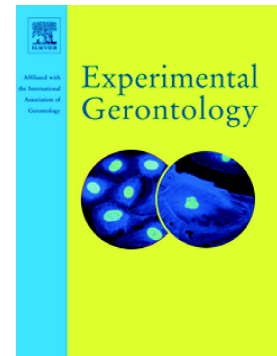


Accepted Manuscript

The joint association of insulin sensitivity and physical activity on the skeletal muscle mass and performance in community-dwelling older adults

Chuan-Wei Yang, Chia-Ing Li, Tsai-Chung Li, Chiu-Shong Liu, Chih-Hsueh Lin, Wen-Yuan Lin, Cheng-Chieh Lin



PII: S0531-5565(16)30239-X
DOI: doi: [10.1016/j.exger.2017.05.006](https://doi.org/10.1016/j.exger.2017.05.006)
Reference: EXG 10049

To appear in: *Experimental Gerontology*

Received date: 4 August 2016
Revised date: 16 March 2017
Accepted date: 5 May 2017

Please cite this article as: Chuan-Wei Yang, Chia-Ing Li, Tsai-Chung Li, Chiu-Shong Liu, Chih-Hsueh Lin, Wen-Yuan Lin, Cheng-Chieh Lin , The joint association of insulin sensitivity and physical activity on the skeletal muscle mass and performance in community-dwelling older adults, *Experimental Gerontology* (2017), doi: [10.1016/j.exger.2017.05.006](https://doi.org/10.1016/j.exger.2017.05.006)

This is a PDF file of an unedited manuscript that has been accepted for publication. As a service to our customers we are providing this early version of the manuscript. The manuscript will undergo copyediting, typesetting, and review of the resulting proof before it is published in its final form. Please note that during the production process errors may be discovered which could affect the content, and all legal disclaimers that apply to the journal pertain.

The Joint Association of Insulin Sensitivity and Physical Activity on the Skeletal
Muscle Mass and Performance in Community-Dwelling Older Adults

Chuan-Wei Yang^{1,2}, Chia-Ing Li^{2,3}, Tsai-Chung Li⁴, Chiu-Shong Liu^{2,3,5}, Chih-Hsueh
Lin^{3,5}, Wen-Yuan Lin^{3,5}, Cheng-Chieh Lin^{1,2,3,5,6*}

¹ Ph.D. Program for Aging, College of Medicine, China Medical University, Taichung,
Taiwan

² Department of Medical Research, China Medical University Hospital, Taichung,
Taiwan

³ School of Medicine, College of Medicine, China Medical University, Taichung,
Taiwan

⁴ Graduate Institute of Biostatistics, College of Public Health, China Medical
University, Taichung, Taiwan

⁵ Department of Family Medicine, China Medical University Hospital, Taichung,
Taiwan

⁶ Department of Healthcare Administration, College of Health Science, Asia
University, Taichung, Taiwan

* Correspondence to: Cheng-Chieh Lin

China Medical University, No.91 Hsueh-Shih Road, Taichung, Taiwan 40402, R.O.C,

Tel: 886-4-2205-3366 ext 6605, Fax: 886-4-2207-8539,

Download English Version:

<https://daneshyari.com/en/article/5501296>

Download Persian Version:

<https://daneshyari.com/article/5501296>

[Daneshyari.com](https://daneshyari.com)