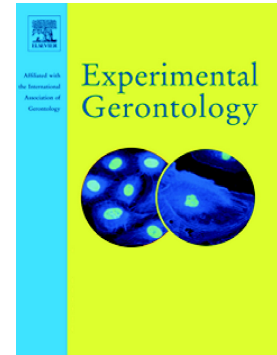


Accepted Manuscript

Effects of vitamin D and resveratrol on metabolic associated markers in liver and adipose tissue from SAMP8 mice

Yehua Rui, Jinbo Cheng, Liqiang Qin, Cheng Shan, Jie Chang, Guiping Wang, Zhongxiao Wan



PII: S0531-5565(16)30231-5
DOI: doi: [10.1016/j.exger.2017.03.017](https://doi.org/10.1016/j.exger.2017.03.017)
Reference: EXG 10029

To appear in: *Experimental Gerontology*

Received date: 1 August 2016
Revised date: 17 March 2017
Accepted date: 19 March 2017

Please cite this article as: Yehua Rui, Jinbo Cheng, Liqiang Qin, Cheng Shan, Jie Chang, Guiping Wang, Zhongxiao Wan , Effects of vitamin D and resveratrol on metabolic associated markers in liver and adipose tissue from SAMP8 mice. The address for the corresponding author was captured as affiliation for all authors. Please check if appropriate. *Exg*(2016), doi: [10.1016/j.exger.2017.03.017](https://doi.org/10.1016/j.exger.2017.03.017)

This is a PDF file of an unedited manuscript that has been accepted for publication. As a service to our customers we are providing this early version of the manuscript. The manuscript will undergo copyediting, typesetting, and review of the resulting proof before it is published in its final form. Please note that during the production process errors may be discovered which could affect the content, and all legal disclaimers that apply to the journal pertain.

Effects of Vitamin D and resveratrol on metabolic associated markers in liver and adipose tissue from SAMP8 mice

Yehua Rui^{1,#}, Jinbo Cheng^{1,#}, Liqiang Qin¹, Cheng Shan², Jie Chang³, Guiping Wang⁴,
Zhongxiao Wan^{1,5,*}

¹ Department of Nutrition and Food Hygiene, School of Public Health, Soochow University, Suzhou, PR China

² University of Waterloo, Waterloo, Ontario, Canada

³ Department of Occupational and Environmental Health, School of Public Health, Soochow University, 199 Ren'ai Road, Suzhou, 215123, P.R. China

⁴ Laboratory Animal Center, Soochow University, 199 Ren'ai Road, Suzhou, 215123, P.R. China

⁵ Jiangsu Key Laboratory of Preventive and Translational Medicine for Geriatric Disease, Soochow University, 199 Ren'ai Road, Suzhou, 215123, P.R. China

#, both authors make equal contribution to this study.

*, Address for Correspondence:

Zhongxiao Wan, PhD

Department of Nutrition and Food Hygiene, School of Public Health, Soochow University, Ren'ai Road 199, Dushuhu Higher Education Town, Suzhou, China, 215123

(P) 0186-0512-65883159; (F) 0186-0512-65883159

Download English Version:

<https://daneshyari.com/en/article/5501410>

Download Persian Version:

<https://daneshyari.com/article/5501410>

[Daneshyari.com](https://daneshyari.com)