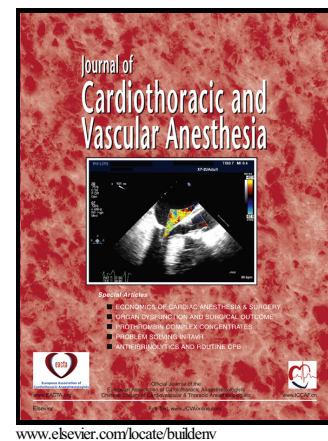


# Author's Accepted Manuscript

The Effect of Transesophageal Echocardiography Probe Placement on Intracuff Pressure of an Endotracheal Tube in Infants and Children

Mineto Kamata, Mumin Hakim, Dmitry Tumin, Senthil G. Krishna, Aymen Naguib, Joseph D. Tobias



PII: S1053-0770(16)30443-8  
DOI: <http://dx.doi.org/10.1053/j.jvca.2016.09.032>  
Reference: YJCAN3858

To appear in: *Journal of Cardiothoracic and Vascular Anesthesia*

Received date: 23 August 2016

Cite this article as: Mineto Kamata, Mumin Hakim, Dmitry Tumin, Senthil G. Krishna, Aymen Naguib and Joseph D. Tobias, The Effect of Transesophageal Echocardiography Probe Placement on Intracuff Pressure of an Endotracheal Tube in Infants and Children, *Journal of Cardiothoracic and Vascular Anesthesia*, <http://dx.doi.org/10.1053/j.jvca.2016.09.032>

This is a PDF file of an unedited manuscript that has been accepted for publication. As a service to our customers we are providing this early version of the manuscript. The manuscript will undergo copyediting, typesetting, and review of the resulting galley proof before it is published in its final citable form. Please note that during the production process errors may be discovered which could affect the content, and all legal disclaimers that apply to the journal pertain.

**Title:** The effect of transesophageal echocardiography probe placement on intracuff pressure of an endotracheal tube in infants and children

**Running title:** Intracuff pressure during TEE

**Authors:** Mineto Kamata, MD<sup>1</sup>  
Mumin Hakim, MBBS<sup>1</sup>  
Dmitry Tumin, PhD<sup>1</sup>  
Senthil G. Krishna, MD<sup>1,2</sup>  
Aymen Naguib, MD<sup>1,2</sup>  
Joseph D. Tobias, MD<sup>1-3</sup>

**Affiliations:**

1. Department of Anesthesiology & Pain Medicine, Nationwide Children's Hospital, Columbus, Ohio
2. Department of Anesthesiology & Pain Medicine, The Ohio State University, Columbus, Ohio
3. Department of Pediatrics, Nationwide Children's Hospital and the Ohio State University, Columbus, Ohio

**Address correspondence to:**

Mineto Kamata, MD  
Department of Anesthesiology & Pain Medicine  
Nationwide Children's Hospital  
700 Children's Drive  
Columbus, Ohio 43205, USA  
Phone: +1(614) 722-5817  
FAX: +1(614) 722-4203  
E-mail: Mineto.Kamata@gmail.com

**Acknowledgements:** none

This research did not receive any specific grant from funding agencies in the public, commercial, or not-for-profit sectors.

**Ethics approval:**

The study was approved by the Institutional Review Board of Nationwide Children's Hospital, Columbus, Ohio (**IRB 14-00554**), which waived requirements for informed consent due to the observational nature of the study. The study was registered at ClinicalTrials.gov (**NCT 02645019**).

**Disclosures:** The authors report no conflict of interest.

Download English Version:

<https://daneshyari.com/en/article/5582438>

Download Persian Version:

<https://daneshyari.com/article/5582438>

[Daneshyari.com](https://daneshyari.com)