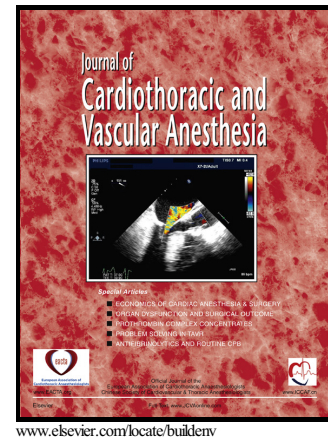


# Author's Accepted Manuscript

## Cognitive Outcomes after Coronary Artery Bypass Grafting

Deepak Bhamidipati, Jordan E. Goldhammer, Michael Sperling, Marc C. Torjman, Melissa M. McCarey, David J. Whellan



PII: S1053-0770(16)30436-0  
DOI: <http://dx.doi.org/10.1053/j.jvca.2016.09.028>  
Reference: YJCAN3854

To appear in: *Journal of Cardiothoracic and Vascular Anesthesia*

Received date: 6 May 2016

Cite this article as: Deepak Bhamidipati, Jordan E. Goldhammer, Michael Sperling, Marc C. Torjman, Melissa M. McCarey and David J. Whellan, Cognitive Outcomes after Coronary Artery Bypass Grafting, *Journal of Cardiothoracic and Vascular Anesthesia*, <http://dx.doi.org/10.1053/j.jvca.2016.09.028>

This is a PDF file of an unedited manuscript that has been accepted for publication. As a service to our customers we are providing this early version of the manuscript. The manuscript will undergo copyediting, typesetting, and review of the resulting galley proof before it is published in its final citable form. Please note that during the production process errors may be discovered which could affect the content, and all legal disclaimers that apply to the journal pertain.

**Title:** Cognitive Outcomes after Coronary Artery Bypass Grafting

**Author Names:** Deepak Bhamidipati<sup>a</sup>, Jordan E. Goldhammer MD<sup>b1</sup>, Michael Sperling MD<sup>c</sup>, Marc C. Torjman PhD<sup>b2</sup>, Melissa M. McCarey MPH<sup>d1</sup>, David J. Whellan MD MHS<sup>d2</sup>

**Affiliations:** <sup>a</sup>Sidney Kimmel Medical College, Thomas Jefferson University, 1025 Walnut Street Philadelphia, PA 19107 Deepak.bhamidipati@jefferson.edu, <sup>b</sup>Department of Anesthesiology, Sidney Kimmel Medical College, Thomas Jefferson University 111 S. 11<sup>th</sup> Street, Suite 8490 Philadelphia, PA 19107 <sup>b1</sup>jordan.goldhammer@jefferson.edu <sup>b2</sup>marc.torjman@jefferson.edu <sup>c</sup>Department of Neurology, Sidney Kimmel Medical College, Thomas Jefferson University, 900 Walnut Street Philadelphia, PA 19107 michael.sperling@jefferson.edu, <sup>d</sup>Jefferson Clinical Research Institute, Thomas Jefferson University, 1015 Chestnut Street Suite 317, Philadelphia PA 19107 <sup>d1</sup>melissa.mccarey@jefferson.edu, <sup>d2</sup>david.whellan@jefferson.edu

**Corresponding Author:**

David J. Whellan, MD MHS  
Jefferson Clinical Research Institute  
Thomas Jefferson University  
1015 Chestnut Street  
Suite 317  
Philadelphia, PA 19107  
215-955-2007  
David.Whellan@jefferson.edu

**Keywords:** Coronary Artery Bypass Grafting, Cognitive Dysfunction, Post-operative cognitive decline

**Funding:** This research did not receive any specific grant from funding agencies in the public, commercial, or not-for-profit sectors

Download English Version:

<https://daneshyari.com/en/article/5582464>

Download Persian Version:

<https://daneshyari.com/article/5582464>

[Daneshyari.com](https://daneshyari.com)