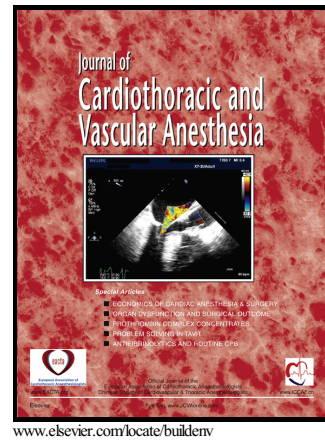


# Author's Accepted Manuscript

Peripheral Near-Infrared Spectroscopy:  
Methodological Aspects and a Systematic Review  
in Post-Cardiac Surgical Patients

Ethan Butler, Melissa Chin, Anders Aneman



PII: S1053-0770(16)30299-3  
DOI: <http://dx.doi.org/10.1053/j.jvca.2016.07.035>  
Reference: YJCAN3781

To appear in: *Journal of Cardiothoracic and Vascular Anesthesia*

Received date: 24 June 2016

Cite this article as: Ethan Butler, Melissa Chin and Anders Aneman, Peripheral Near-Infrared Spectroscopy: Methodological Aspects and a Systematic Review in Post-Cardiac Surgical Patients, *Journal of Cardiothoracic and Vascular Anesthesia*, <http://dx.doi.org/10.1053/j.jvca.2016.07.035>

This is a PDF file of an unedited manuscript that has been accepted for publication. As a service to our customers we are providing this early version of the manuscript. The manuscript will undergo copyediting, typesetting, and review of the resulting galley proof before it is published in its final citable form. Please note that during the production process errors may be discovered which could affect the content, and all legal disclaimers that apply to the journal pertain.

**Title**

Peripheral near-infrared spectroscopy: methodological aspects and a systematic review in post-cardiac surgical patients

**Authors**

Ethan Butler<sup>a</sup>

Melissa Chin<sup>b</sup>

Anders Aneman<sup>b,c,d</sup>

**Affiliations**

<sup>a</sup> Faculty of Medicine, University of New South Wales, Sydney, Australia

<sup>b</sup> Intensive Care Unit, Liverpool Hospital, Sydney, Australia.

<sup>c</sup> University of New South Wales, South Western Sydney Clinical School, Sydney, Australia.

<sup>d</sup> Ingham Institute for Applied Medical Research, Sydney, Australia

**Corresponding Author**

Anders Aneman, MD, PhD, EDIC, FCICM

Intensive Care Unit, Liverpool Hospital, South Western Sydney Local Health District

Level 2, Clinical Building

Locked Bag 7103

Liverpool BC NSW 1871

Ph: +61 2 8738 3400

Fax: +61 2 8738 3551

E-mail: anders.aneman@swhs.nsw.gov.au

**Author Contributions**

All authors conceived the manuscript. EB and MC retrieved and reviewed the literature. AA resolved article inclusion conflicts. EB drafted the review. MC and AA reviewed and refined the first draft. All authors read and approved the final manuscript.

**Competing interests**

The authors declare no conflicts of interest.

**Acknowledgement**

This research did not receive any specific grant from funding agencies in the public, commercial, or not-for-profit sectors.

Download English Version:

<https://daneshyari.com/en/article/5582540>

Download Persian Version:

<https://daneshyari.com/article/5582540>

[Daneshyari.com](https://daneshyari.com)