

## Accepted Manuscript

Plastid Phylogenomics and Adaptive Evolution of *Gaultheria* series *Trichophyllae* (Ericaceae), a Clade from Sky Islands of the Himalaya-Hengduan Mountains

Ming-Ying Zhang, Peter W. Fritsch, Peng-Fei Ma, Hong Wang, Lu Lu, De-Zhu Li

PII: S1055-7903(17)30094-5

DOI: <http://dx.doi.org/10.1016/j.ympev.2017.01.015>

Reference: YMPEV 5738

To appear in: *Molecular Phylogenetics and Evolution*

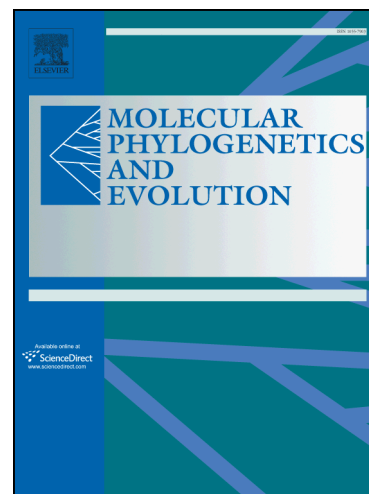
Received Date: 12 October 2016

Revised Date: 23 January 2017

Accepted Date: 30 January 2017

Please cite this article as: Zhang, M-Y., Fritsch, P.W., Ma, P-F., Wang, H., Lu, L., Li, D-Z., Plastid Phylogenomics and Adaptive Evolution of *Gaultheria* series *Trichophyllae* (Ericaceae), a Clade from Sky Islands of the Himalaya-Hengduan Mountains, *Molecular Phylogenetics and Evolution* (2017), doi: <http://dx.doi.org/10.1016/j.ympev.2017.01.015>

This is a PDF file of an unedited manuscript that has been accepted for publication. As a service to our customers we are providing this early version of the manuscript. The manuscript will undergo copyediting, typesetting, and review of the resulting proof before it is published in its final form. Please note that during the production process errors may be discovered which could affect the content, and all legal disclaimers that apply to the journal pertain.



**Plastid Phylogenomics and Adaptive Evolution of *Gaultheria* series *Trichophyllae*  
(Ericaceae), a Clade from Sky Islands of the Himalaya-Hengduan Mountains**

Ming-Ying Zhang<sup>a, b</sup>, Peter W. Fritsch<sup>c</sup>, Peng-Fei Ma<sup>a, b</sup>, Hong Wang<sup>a, b</sup>, Lu Lu<sup>a, b\*</sup>,  
De-Zhu Li<sup>a, b\*</sup>

<sup>a</sup> Key Laboratory for Plant Diversity and Biogeography of East Asia, Kunming  
Institute of Botany, Chinese Academy of Sciences, Kunming, Yunnan 650201,  
China.

<sup>b</sup> Plant Germplasm and Genomics Center, Germplasm Bank of Wild Species,  
Kunming Institute of Botany, Chinese Academy of Sciences, Kunming, Yunnan  
650201, China.

<sup>c</sup> Botanical Research Institute of Texas, 1700 University Drive, Fort Worth, TX  
76017, U.S.A.

\* Corresponding authors.

Email addresses: dzl@mail.kib.ac.cn (D.-Z. Li), lulu@mail.kib.ac.cn (L. Lu)

Download English Version:

<https://daneshyari.com/en/article/5592396>

Download Persian Version:

<https://daneshyari.com/article/5592396>

[Daneshyari.com](https://daneshyari.com)