

Accepted Manuscript

Short Communication

Historical introgression drives pervasive mitochondrial admixture between two species of pelagic sharks

Shannon Corrigan, Pierpaolo Maisano Delser, Corey Eddy, Clinton Duffy, Lei Yang, Chenhong Li, Adam L. Bazinet, Stefano Mona, Gavin J.P. Naylor

PII: S1055-7903(17)30211-7

DOI: <http://dx.doi.org/10.1016/j.ympev.2017.03.011>

Reference: YMPEV 5769

To appear in: *Molecular Phylogenetics and Evolution*

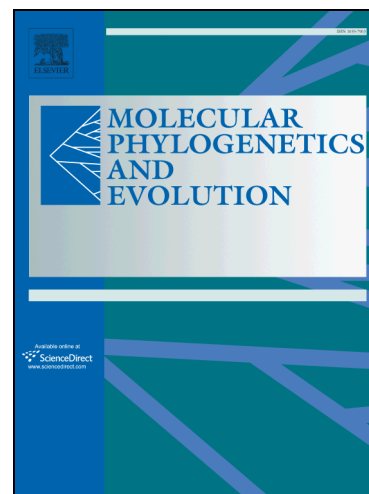
Received Date: 28 July 2016

Revised Date: 16 February 2017

Accepted Date: 8 March 2017

Please cite this article as: Corrigan, S., Maisano Delser, P., Eddy, C., Duffy, C., Yang, L., Li, C., Bazinet, A.L., Mona, S., Naylor, G.J.P., Historical introgression drives pervasive mitochondrial admixture between two species of pelagic sharks, *Molecular Phylogenetics and Evolution* (2017), doi: <http://dx.doi.org/10.1016/j.ympev.2017.03.011>

This is a PDF file of an unedited manuscript that has been accepted for publication. As a service to our customers we are providing this early version of the manuscript. The manuscript will undergo copyediting, typesetting, and review of the resulting proof before it is published in its final form. Please note that during the production process errors may be discovered which could affect the content, and all legal disclaimers that apply to the journal pertain.



Historical introgression drives pervasive mitochondrial admixture between two species of pelagic sharks

Shannon Corrigan^{1*}, Pierpaolo Maisano Delser^{2,3,4}, Corey Eddy⁵, Clinton Duffy⁶, Lei Yang¹, Chenhong Li^{1,7}, Adam L. Bazinet^{8,9}, Stefano Mona^{2,3} and Gavin J. P. Naylor^{1,10}

¹ *Department of Biology, College of Charleston, Charleston SC, USA.*

² *Institut de Systématique, Évolution, Biodiversité, ISYEB - UMR 7205 - CNRS, MNHN, UPMC, EPHE, Ecole Pratique des Hautes Etudes, Paris, France.*

³ *EPHE, PSL Research University, Paris, France.*

⁴ *Present address: Department of Zoology, University of Cambridge, Cambridge, UK*

⁵ *Department of Biology, University of Massachusetts Dartmouth, Dartmouth MA, USA.*

⁶ *Marine Ecosystems, Science and Policy, Department of Conservation, Auckland, New Zealand.*

⁷ *Present address: Key Laboratory of Exploration and Utilization of Aquatic Genetic Resources, Shanghai Ocean University, Ministry of Education, Shanghai, China.*

⁸ *Laboratory of Molecular Evolution, Center for Bioinformatics and Computational Biology, University of Maryland, College Park MD, USA.*

⁹ *Present address: National Biodefense Analysis and Countermeasures Center, Fort Detrick, MD, USA.*

¹⁰ *College of Graduate Studies, Medical University of South Carolina, Charleston SC, USA.*

* *Corresponding author: Shannon Corrigan email: corrigan_sl@cofc.edu*

Download English Version:

<https://daneshyari.com/en/article/5592409>

Download Persian Version:

<https://daneshyari.com/article/5592409>

[Daneshyari.com](https://daneshyari.com)