

Accepted Manuscript

Phylogenetic analysis of two *Plectus* mitochondrial genomes (Nematoda: Plectida) supports a sister group relationship between Plectida and Rhabditida within Chromadorea

Jiyeon Kim, Elizabeth Kern, Taeho Kim, Mikang Sim, Jaebum Kim, Yuseob Kim, Chungoo Park, Steven A. Nadler, Joong-Ki Park

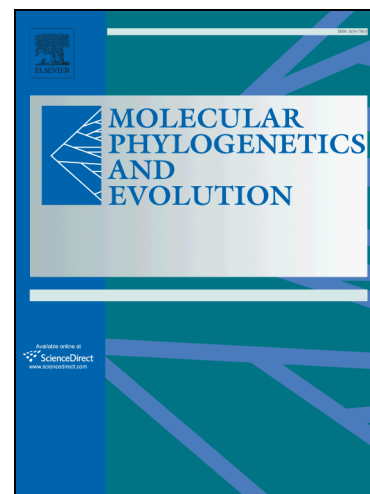
PII: S1055-7903(16)30272-X
DOI: <http://dx.doi.org/10.1016/j.ympev.2016.10.010>
Reference: YMPEV 5650

To appear in: *Molecular Phylogenetics and Evolution*

Received Date: 16 August 2016
Revised Date: 8 October 2016
Accepted Date: 11 October 2016

Please cite this article as: Kim, J., Kern, E., Kim, T., Sim, M., Kim, J., Kim, Y., Park, C., Nadler, S.A., Park, J-K., Phylogenetic analysis of two *Plectus* mitochondrial genomes (Nematoda: Plectida) supports a sister group relationship between Plectida and Rhabditida within Chromadorea, *Molecular Phylogenetics and Evolution* (2016), doi: <http://dx.doi.org/10.1016/j.ympev.2016.10.010>

This is a PDF file of an unedited manuscript that has been accepted for publication. As a service to our customers we are providing this early version of the manuscript. The manuscript will undergo copyediting, typesetting, and review of the resulting proof before it is published in its final form. Please note that during the production process errors may be discovered which could affect the content, and all legal disclaimers that apply to the journal pertain.



**Phylogenetic analysis of two *Plectus* mitochondrial genomes
(Nematoda: Plectida) supports a sister group relationship between
Plectida and Rhabditida within Chromadorea**

Jiyeon Kim^{a,b†}, Elizabeth Kern^{b†}, Taeho Kim^c, Mikang Sim^d, Jaebum Kim^d, Yuseob Kim^b, Chungoo Park^e, Steven A. Nadler^f, Joong-Ki Park^{b*}

^a*Freshwater Biodiversity Research Division, Nakdonggang National Institute of Biological Resources, Sangju, Gyeongsangbuk-do, 37242, Republic of Korea*

^b*Division of EcoScience, Ewha Womans University, 52 Ewhayeodae-gil, Seodaemun-gu, Seoul 03760, Republic of Korea*

^c*Division of Environmental Science and Ecological Engineering, College of Life Sciences and Biotechnology, Korea University, 145 Anam-ro, Seongbuk-gu, Seoul 02841, Republic of Korea*

^d*Department of Stem Cell and Regenerative Biology, Konkuk University, 120 Neungdong-ro, Gwangjin-gu, Seoul 05029, Republic of Korea*

^e*School of Biological Sciences and Technology, Chonnam National University, Gwangju 500-757, Republic of Korea*

^f*Department of Entomology and Nematology, University of California, Davis, CA 95616, USA*

*Corresponding author: jkpark@ewha.ac.kr (J.-K. Park)

†Jiyeon Kim and Elizabeth Kern contributed equally to this work.

Running title: Phylogenetic analysis of *Plectus*

Download English Version:

<https://daneshyari.com/en/article/5592479>

Download Persian Version:

<https://daneshyari.com/article/5592479>

[Daneshyari.com](https://daneshyari.com)