

Accepted Manuscript

Differences in the expression profile of endo- β -(1,6)-D-galactanase in pathogenic and non-pathogenic races of *Colletotrichum lindemuthianum* grown in the presence of arabinogalactan, xylan or *Phaseolus vulgaris* cell walls

Maria G. Villa Rivera, María G. Zavala-Páramo, Ulises Conejo-Saucedo, Everardo López-Romero, Alicia Lara-Márquez, Horacio Cano-Camacho

PII: S0885-5765(16)30148-5

DOI: [10.1016/j.pmpp.2016.10.002](https://doi.org/10.1016/j.pmpp.2016.10.002)

Reference: YPMPP 1215

To appear in: *Physiological and Molecular Plant Pathology*

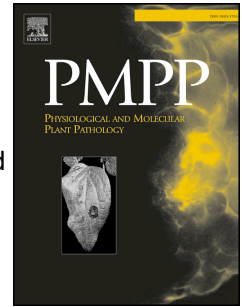
Received Date: 5 May 2016

Revised Date: 3 August 2016

Accepted Date: 5 October 2016

Please cite this article as: Villa Rivera MG, Zavala-Páramo MG, Conejo-Saucedo U, López-Romero E, Lara-Márquez A, Cano-Camacho H, Differences in the expression profile of endo- β -(1,6)-D-galactanase in pathogenic and non-pathogenic races of *Colletotrichum lindemuthianum* grown in the presence of arabinogalactan, xylan or *Phaseolus vulgaris* cell walls, *Physiological and Molecular Plant Pathology* (2016), doi: 10.1016/j.pmpp.2016.10.002.

This is a PDF file of an unedited manuscript that has been accepted for publication. As a service to our customers we are providing this early version of the manuscript. The manuscript will undergo copyediting, typesetting, and review of the resulting proof before it is published in its final form. Please note that during the production process errors may be discovered which could affect the content, and all legal disclaimers that apply to the journal pertain.



1 Differences in the expression profile of endo- β -(1,6)-D-galactanase in
2 pathogenic and non-pathogenic races of *Colletotrichum lindemuthianum*
3 grown in the presence of arabinogalactan, xylan or *Phaseolus vulgaris*
4 cell walls

5
6 Maria G. Villa Rivera^a, María G. Zavala-Páramo^a, Ulises Conejo-Saucedo^a, Everardo
7 López-Romero^b, Alicia Lara-Márquez^a, Horacio Cano-Camacho^{a,*}

8
9 ^a*Centro Multidisciplinario de Estudios en Biotecnología, FMVZ, Universidad Michoacana de San*
10 *Nicolás de Hidalgo, Km 9.5 Carretera Morelia-Zinapécuaro, Posta Veterinaria, Morelia,*
11 *Michoacán, México.*

12 ^b*Departamento de Biología, División de Ciencias Naturales y Exactas, Universidad de*
13 *Guanajuato, Noria Alta SN, Guanajuato, Gto., México.*

14
15
16 *Corresponding author. Centro Multidisciplinario de Estudios en Biotecnología, FMVZ,
17 Universidad Michoacana de San Nicolás de Hidalgo, Km 9.5 Carretera Morelia-Zinapécuaro,
18 Posta Veterinaria, Morelia, Michoacán, México. Tel/Fax +52 443 2958029

19 *E-mail addresses:* gvillarivera@yahoo.es (M.G. Villa-Rivera), gjavpar@hotmail.com (M.G.
20 Zavala-Páramo), conejet@me.com (U. Conejo-Saucedo), everlope@ugto.mx (E. López-
21 Romero), alicialara@me.com (A. Lara-Márquez), hcano1gz1@mac.com (Horacio Cano-
22 Camacho)

23

Download English Version:

<https://daneshyari.com/en/article/5592596>

Download Persian Version:

<https://daneshyari.com/article/5592596>

[Daneshyari.com](https://daneshyari.com)