

Accepted Manuscript

ABCA1 and HDL₃ are required to modulate smooth muscle cells phenotypic switch after cholesterol loading

Silvia Castiglioni, Matteo Monti, Lorenzo Arnaboldi, Monica Canavesi, Giuditta Ainis Buscherini, Laura Calabresi, Alberto Corsini, Stefano Bellostà

PII: S0021-9150(17)31283-2

DOI: [10.1016/j.atherosclerosis.2017.09.012](https://doi.org/10.1016/j.atherosclerosis.2017.09.012)

Reference: ATH 15200

To appear in: *Atherosclerosis*

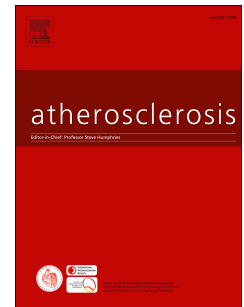
Received Date: 19 April 2017

Revised Date: 29 August 2017

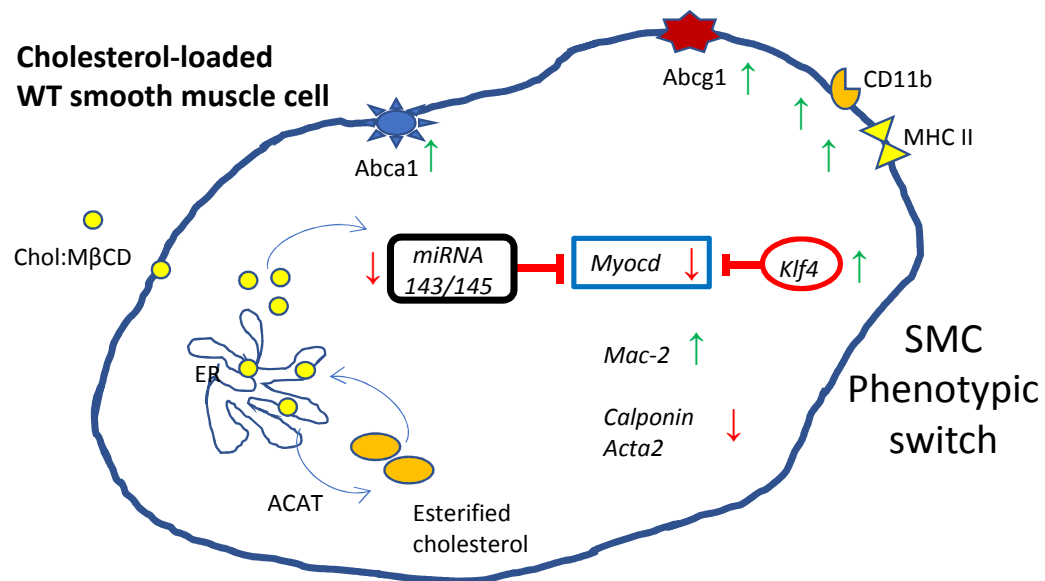
Accepted Date: 12 September 2017

Please cite this article as: Castiglioni S, Monti M, Arnaboldi L, Canavesi M, Ainis Buscherini G, Calabresi L, Corsini A, Bellostà S, ABCA1 and HDL₃ are required to modulate smooth muscle cells phenotypic switch after cholesterol loading, *Atherosclerosis* (2017), doi: 10.1016/j.atherosclerosis.2017.09.012.

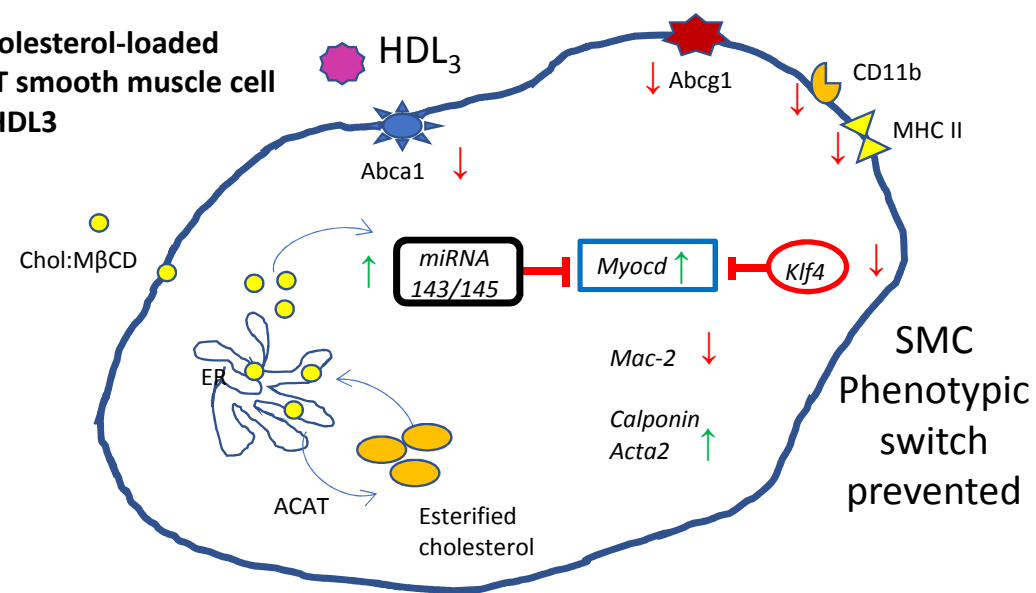
This is a PDF file of an unedited manuscript that has been accepted for publication. As a service to our customers we are providing this early version of the manuscript. The manuscript will undergo copyediting, typesetting, and review of the resulting proof before it is published in its final form. Please note that during the production process errors may be discovered which could affect the content, and all legal disclaimers that apply to the journal pertain.



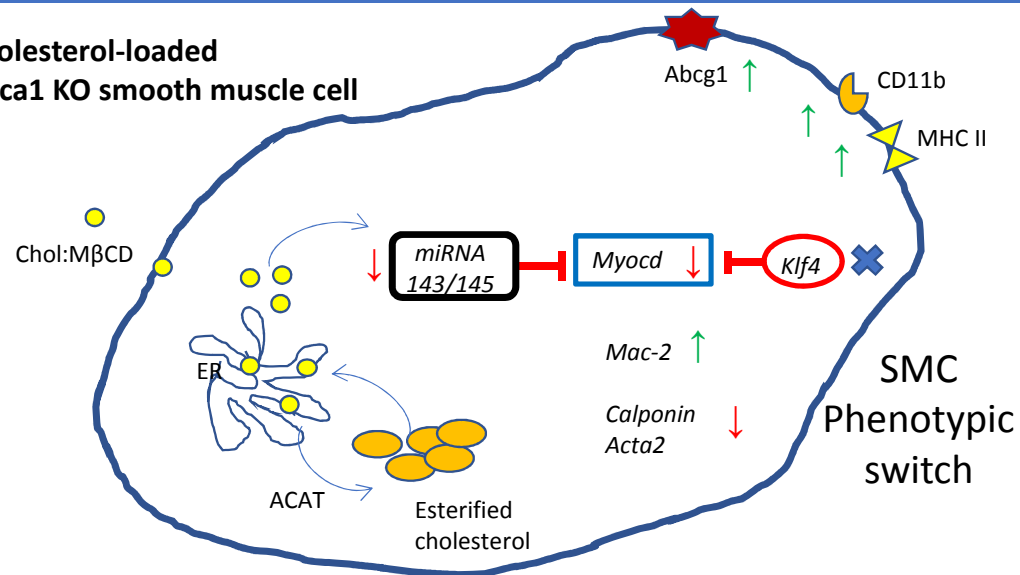
Cholesterol-loaded WT smooth muscle cell



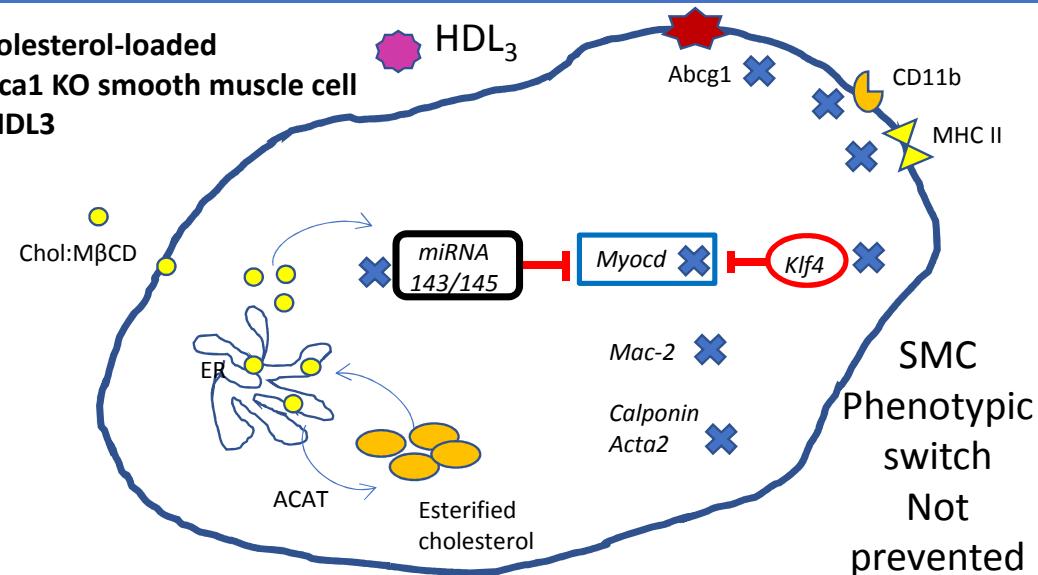
Cholesterol-loaded WT smooth muscle cell + HDL3



Cholesterol-loaded Abca1 KO smooth muscle cell



Cholesterol-loaded Abca1 KO smooth muscle cell + HDL3



Download English Version:

<https://daneshyari.com/en/article/5599223>

Download Persian Version:

<https://daneshyari.com/article/5599223>

[Daneshyari.com](https://daneshyari.com)