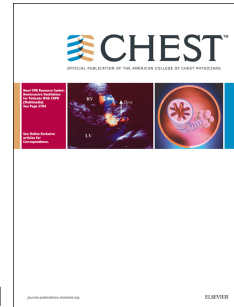


# Accepted Manuscript

Defining a research agenda to address the converging epidemics of tuberculosis and diabetes. Part 1: Epidemiology and clinical management

Julia A. Critchley, Blanca I. Restrepo, Katharina Ronacher, Anil Kapur, Andrew A. Bremer, Larry S. Schlesinger, Randall Basaraba, Hardy Kornfeld, Reinout van Crevel



PII: S0012-3692(17)30730-4

DOI: [10.1016/j.chest.2017.04.155](https://doi.org/10.1016/j.chest.2017.04.155)

Reference: CHEST 1064

To appear in: *CHEST*

Received Date: 5 January 2017

Revised Date: 14 March 2017

Accepted Date: 5 April 2017

Please cite this article as: Critchley JA, Restrepo BI, Ronacher K, Kapur A, Bremer AA, Schlesinger LS, Basaraba R, Kornfeld H, van Crevel R, Defining a research agenda to address the converging epidemics of tuberculosis and diabetes. Part 1: Epidemiology and clinical management, *CHEST* (2017), doi: 10.1016/j.chest.2017.04.155.

This is a PDF file of an unedited manuscript that has been accepted for publication. As a service to our customers we are providing this early version of the manuscript. The manuscript will undergo copyediting, typesetting, and review of the resulting proof before it is published in its final form. Please note that during the production process errors may be discovered which could affect the content, and all legal disclaimers that apply to the journal pertain.

## Defining a research agenda to address the converging epidemics of tuberculosis and diabetes. Part 1: Epidemiology and clinical management

Authors:

Julia A Critchley<sup>1</sup>, Blanca I. Restrepo<sup>2</sup>, Katharina Ronacher<sup>3</sup>, Anil Kapur<sup>4</sup>, Andrew A. Bremer<sup>5</sup>, Larry S Schlesinger<sup>6</sup>, Randall Basaraba<sup>7</sup>, Hardy Kornfeld<sup>8</sup>, Reinout van Crevel<sup>9</sup>

<sup>1</sup> Population Health Research Institute, St George's, University of London, SW17 0RE, UK

<sup>2</sup> University of Texas Health Science Center Houston, School of Public Health, Brownsville campus, Texas, US

<sup>3</sup> Mater Research Institute – The University of Queensland, Translational Research Institute, Woolloongabba, Queensland, Australia

<sup>4</sup> Chairman, World Diabetes Foundation, Copenhagen, Denmark

<sup>5</sup> Division of Diabetes, Endocrinology, and Metabolic Diseases, National Institute of Diabetes and Digestive and Kidney Diseases, National Institutes of Health, Bethesda, Maryland, US

<sup>6</sup> Department of Microbial Infection & Immunity, The Ohio State University, Ohio, US

<sup>7</sup> Department of Microbiology, Immunology and Pathology, Colorado State University, Colorado, US

<sup>8</sup> Department of Medicine, University of Massachusetts Medical School, US

<sup>9</sup> Department of Internal Medicine, Radboud University Medical Center, Nijmegen, the Netherlands

Download English Version:

<https://daneshyari.com/en/article/5600516>

Download Persian Version:

<https://daneshyari.com/article/5600516>

[Daneshyari.com](https://daneshyari.com)