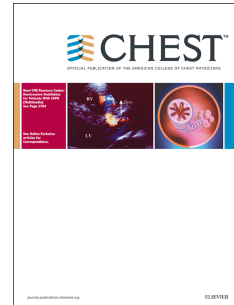


Accepted Manuscript

Determinants of smoking cessation in COPD patients treated in the outpatient setting

Sandra S. Tøttenborg, MSc, Reimar W. Thomsen, DMSc, Søren P. Johnsen, DMSc,
Henrik Nielsen, MSc, Peter Lange, DMSc



PII: S0012-3692(16)49107-5

DOI: [10.1016/j.chest.2016.05.020](https://doi.org/10.1016/j.chest.2016.05.020)

Reference: CHEST 489

To appear in: *CHEST*

Received Date: 28 January 2016

Revised Date: 11 April 2016

Accepted Date: 23 May 2016

Please cite this article as: Tøttenborg SS, Thomsen RW, Johnsen SP, Nielsen H, Lange P, Determinants of smoking cessation in COPD patients treated in the outpatient setting, *CHEST* (2016), doi: 10.1016/j.chest.2016.05.020.

This is a PDF file of an unedited manuscript that has been accepted for publication. As a service to our customers we are providing this early version of the manuscript. The manuscript will undergo copyediting, typesetting, and review of the resulting proof before it is published in its final form. Please note that during the production process errors may be discovered which could affect the content, and all legal disclaimers that apply to the journal pertain.

Determinants of smoking cessation in COPD patients treated in the outpatient setting

Running Head: Determinants of smoking cessation in COPD

Sandra S. Tøttenborg MSc¹, Reimar W. Thomsen DMSc², Søren P. Johnsen DMSc², Henrik Nielsen MSc² and Peter Lange DMSc^{1,3}

¹Department of Public Health, Section of Social Medicine, University of Copenhagen

²Department of Clinical Epidemiology, Aarhus University Hospital

³Respiratory Section, Hvidovre Hospital

Corresponding author: Sandra Sjøgaard Tøttenborg, Section of Social Medicine, Department of Public Health, University of Copenhagen, Email: sato@sund.ku.dk

Guarantor: PL and SST

Competing interests: None of the authors have any conflicts of interests.

Funding: The study was supported by grants from the Danish Lung Association, the University of Copenhagen, and Boehringer Ingelheim. The work of RWT and SPJ was funded by the Program for Clinical Research Infrastructure (PROCRIN) established by the Lundbeck Foundation and the Novo Nordisk Foundation and administered by the Danish Regions.

Online supplement: This article has an online data supplement

Download English Version:

<https://daneshyari.com/en/article/5600563>

Download Persian Version:

<https://daneshyari.com/article/5600563>

[Daneshyari.com](https://daneshyari.com)