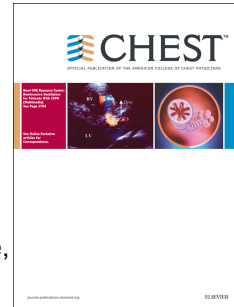


Accepted Manuscript

The 8th Edition Lung Cancer Stage Classification

Frank C. Detterbeck, MD, Daniel J. Boffa, MD, Anthony W. Kim, MD, Lynn T. Tanoue, MD



PII: S0012-3692(16)60780-8

DOI: [10.1016/j.chest.2016.10.010](https://doi.org/10.1016/j.chest.2016.10.010)

Reference: CHEST 752

To appear in: *CHEST*

Received Date: 10 September 2016

Revised Date: 3 October 2016

Accepted Date: 5 October 2016

Please cite this article as: Detterbeck FC, Boffa DJ, Kim AW, Tanoue LT, The 8th Edition Lung Cancer Stage Classification, *CHEST* (2016), doi: 10.1016/j.chest.2016.10.010.

This is a PDF file of an unedited manuscript that has been accepted for publication. As a service to our customers we are providing this early version of the manuscript. The manuscript will undergo copyediting, typesetting, and review of the resulting proof before it is published in its final form. Please note that during the production process errors may be discovered which could affect the content, and all legal disclaimers that apply to the journal pertain.

The 8th Edition Lung Cancer Stage Classification

Word count: 3,694

Corresponding Author:

Frank C. Detterbeck, MD
Professor & Chief,
Yale University School of Medicine
Department of Surgery
Section of Thoracic Surgery
P.O. Box 208062
New Haven, CT 06520-8062
frank.detterbeck@yale.edu

*there is no conflict of interest for Frank C. Detterbeck

Daniel J. Boffa, MD
Associate Professor
Yale University School of Medicine
Department of Surgery
Section of Thoracic Surgery
P.O. Box 208062
New Haven, CT 06520-8062
daniel.boffa@yale.edu

*there is no conflict of interest for Daniel J. Boffa

Anthony W. Kim, MD
Associate Professor
Yale University School of Medicine
Department of Surgery
Section of Thoracic Surgery
P.O. Box 208062
New Haven, CT 06520-8062
anthony.kim@yale.edu

*there is no conflict of interest for Anthony W. Kim

Lynn T. Tanoue, MD
Vice-Chair for Clinical Affairs
Yale University School of Medicine
Department of Internal Medicine
Section of Pulmonary, Critical Care and Sleep Medicine
P.O. Box 208057
New Haven, CT 06520-208057
lynn.tanoue@yale.edu

*there is no conflict of interest for Lynn T. Tanoue

Download English Version:

<https://daneshyari.com/en/article/5601060>

Download Persian Version:

<https://daneshyari.com/article/5601060>

[Daneshyari.com](https://daneshyari.com)