

# Accepted Manuscript

Association between implantation depth assessed by computed tomography and new-onset conduction disturbances after transcatheter aortic valve implantation

João Gonçalves Almeida, Sara Moura Ferreira, Paulo Fonseca, Tiago Dias, Cláudio Guerreiro, Ana Raquel Barbosa, Pedro Teixeira, Mónica Carvalho, Wilson Ferreira, Nuno Dias Ferreira, Marco Oliveira, Helena Gonçalves, Pedro Braga, José Ribeiro, João Primo, Vasco Gama Ribeiro

PII: S1934-5925(17)30171-5

DOI: [10.1016/j.jcct.2017.08.003](https://doi.org/10.1016/j.jcct.2017.08.003)

Reference: JCCT 1006

To appear in: *Journal of Cardiovascular Computed Tomograph*

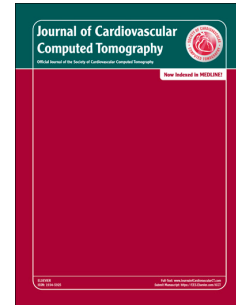
Received Date: 15 May 2017

Revised Date: 5 August 2017

Accepted Date: 12 August 2017

Please cite this article as: Almeida JoãGonç, Ferreira SM, Fonseca P, Dias T, Guerreiro Clá, Barbosa AR, Teixeira P, Carvalho Mó, Ferreira W, Ferreira ND, Oliveira M, Gonçalves H, Braga P, Ribeiro José, Primo Joã, Ribeiro VG, Association between implantation depth assessed by computed tomography and new-onset conduction disturbances after transcatheter aortic valve implantation, *Journal of Cardiovascular Computed Tomograph* (2017), doi: 10.1016/j.jcct.2017.08.003.

This is a PDF file of an unedited manuscript that has been accepted for publication. As a service to our customers we are providing this early version of the manuscript. The manuscript will undergo copyediting, typesetting, and review of the resulting proof before it is published in its final form. Please note that during the production process errors may be discovered which could affect the content, and all legal disclaimers that apply to the journal pertain.



**Title:** Association between implantation depth assessed by computed tomography and new-onset conduction disturbances after transcatheter aortic valve implantation

**Authors:** João Gonçalves Almeida, MD<sup>a</sup>; Sara Moura Ferreira, MD<sup>b</sup>; Paulo Fonseca, MD<sup>1</sup>; Tiago Dias, MD<sup>a</sup>; Cláudio Guerreiro, MD<sup>a</sup>; Ana Raquel Barbosa, MD<sup>a</sup>; Pedro Teixeira, MD<sup>a</sup>; Mónica Carvalho<sup>a</sup>; Wilson Ferreira<sup>a</sup>; Nuno Dias Ferreira, MD<sup>a</sup>; Marco Oliveira, MD<sup>a</sup>; Helena Gonçalves, MD<sup>a</sup>; Pedro Braga, MD<sup>a</sup>; José Ribeiro, MD<sup>a</sup>; João Primo, MD<sup>a</sup>; Vasco Gama Ribeiro, MD<sup>a</sup>

a) Department of Cardiology, Gaia/Espinho Hospital Center, Rua Conceição Fernandes, 4434-502 Vila Nova de Gaia, Portugal.

b) Department of Cardiology, Divino Espirito Santo Hospital, Ponta Delgada, Portugal.

**Short title:** Implantation depth and conduction disturbances after TAVI

**Corresponding author:**

João Tiago Gonçalves Almeida, MD

Rua Conceição Fernandes

4434-502 Vila Nova de Gaia, Portugal

E-mail: [joaotgalmeida@gmail.com](mailto:joaotgalmeida@gmail.com)

Telephone: +351915017603 / Fax number: +351227830209

**Conflicts of interest:** None.

Download English Version:

<https://daneshyari.com/en/article/5614965>

Download Persian Version:

<https://daneshyari.com/article/5614965>

[Daneshyari.com](https://daneshyari.com)