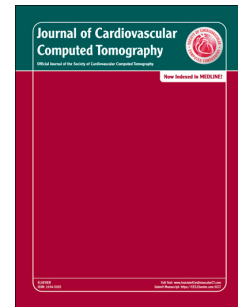


Accepted Manuscript

Interpreting results of coronary computed tomography angiography-derived fractional flow reserve in clinical practice

Mark G. Rabbat, Daniel S. Berman, Morton Kern, Gilbert Raff, Kavitha Chinnaiyan, Lynne Kowweek, Leslee J. Shaw, Philipp Blanke, Markus Scherer, Jesper M. Jensen, John Lesser, Bjarne L. Nørgaard, Gianluca Pontone, Bernard De Bruyne, Jeroen J. Bax, Jonathon Leipsic



PII: S1934-5925(17)30161-2

DOI: [10.1016/j.jcct.2017.06.002](https://doi.org/10.1016/j.jcct.2017.06.002)

Reference: JCCT 997

To appear in: *Journal of Cardiovascular Computed Tomography*

Received Date: 7 March 2017

Revised Date: 27 April 2017

Accepted Date: 21 June 2017

Please cite this article as: Rabbat MG, Berman DS, Kern M, Raff G, Chinnaiyan K, Kowweek L, Shaw LJ, Blanke P, Scherer M, Jensen JM, Lesser J, Nørgaard BL, Pontone G, De Bruyne B, Bax JJ, Leipsic J, Interpreting results of coronary computed tomography angiography-derived fractional flow reserve in clinical practice, *Journal of Cardiovascular Computed Tomography* (2017), doi: 10.1016/j.jcct.2017.06.002.

This is a PDF file of an unedited manuscript that has been accepted for publication. As a service to our customers we are providing this early version of the manuscript. The manuscript will undergo copyediting, typesetting, and review of the resulting proof before it is published in its final form. Please note that during the production process errors may be discovered which could affect the content, and all legal disclaimers that apply to the journal pertain.

Interpreting results of coronary computed tomography angiography-derived fractional flow reserve in clinical practice

Mark G. Rabbat, MD^{a,b}, Daniel S. Berman, MD^c, Morton Kern, MD^d, Gilbert Raff, MD^e, Kavitha Chinnaiyan, MD^e, Lynne Kowek, MD^f, Leslee J. Shaw, PhD^g, Philipp Blanke MD^h, Markus Scherer, MDⁱ, Jesper M. Jensen, MD^j, John Lesser, MD^k, Bjarne L. Nørgaard, MD, PhD^j, Gianluca Pontone, MD, PhD^j, Bernard De Bruyne, MD^m, Jeroen J. Bax, MD, PhDⁿ, Jonathon Leipsic, MD, PhD^h

Institutions:

^a Department of Medicine and Radiology, Division of Cardiology. Loyola University Chicago, Chicago, IL.

^b Edward Hines Jr. Veteran's Affairs Hospital, Hines, Illinois.

^c Cedars-Sinai Medical Center, Department of Imaging

^d VA Long Beach HCS, Department of Cardiology. University of California Irvine.

^e Beaumont Health, Department of Cardiology

^f Duke University, Department of Medicine and Radiology

^g Emory University, Department of Cardiology

^h St. Paul's Hospital & University of British Columbia, Department of Radiology

ⁱ Sanger Heart and Vascular Institute, Department of Cardiology

^j Aarhus University Hospital, Department of Cardiology. Denmark.

^k Minneapolis Heart Institute

^l Cardiologico Monzino, Department of Cardiovascular Imaging. Milan, Italy.

^m OLV Ziekenhuis Aalst, Cardiovascular Center Aalst.

ⁿ Leiden University Medical Center, Department of Cardiology. Netherlands.

Keywords: fractional flow reserve, computational fluid dynamics, coronary computed tomography angiography, coronary artery disease

Running Head: Interpreting FFR_{CT}

Corresponding Author:

Mark George Rabbat, MD, FSCCT
Assistant Professor of Medicine and Radiology, Division of Cardiology
Loyola University Medical Center
2160 S. First Ave.
Maywood, IL 60153
Office: 708-327-2747 FAX: 708-327-2377
Email: mrabbat@lumc.edu

Download English Version:

<https://daneshyari.com/en/article/5614972>

Download Persian Version:

<https://daneshyari.com/article/5614972>

[Daneshyari.com](https://daneshyari.com)