

# Accepted Manuscript

Practical determination of aortic valve calcium volume score on contrast-enhanced computed tomography prior to transcatheter aortic valve replacement and impact on paravalvular regurgitation: Elucidating optimal threshold cutoffs

Nicolas Bettinger, MD, Omar K. Khalique, MD, Joseph M. Krepp, MD, Nadira B. Hamid, MD, David J. Bae, MD, Todd C. Pulerwitz, MD, Ming Liao, M.A., Rebecca T. Hahn, MD, Torsten P. Vahl, MD, Tamim M. Nazif, MD, Isaac George, MD, Martin B. Leon, MD, Andrew J. Einstein, MD, PhD, Susheel K. Kodali, MD

PII: S1934-5925(17)30107-7

DOI: [10.1016/j.jcct.2017.04.009](https://doi.org/10.1016/j.jcct.2017.04.009)

Reference: JCCT 985

To appear in: *Journal of Cardiovascular Computed Tomography*

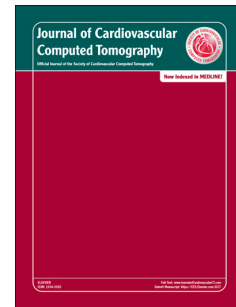
Received Date: 27 January 2017

Revised Date: 28 March 2017

Accepted Date: 20 April 2017

Please cite this article as: Bettinger N, Khalique OK, Krepp JM, Hamid NB, Bae DJ, Pulerwitz TC, Liao M, Hahn RT, Vahl TP, Nazif TM, George I, Leon MB, Einstein AJ, Kodali SK, Practical determination of aortic valve calcium volume score on contrast-enhanced computed tomography prior to transcatheter aortic valve replacement and impact on paravalvular regurgitation: Elucidating optimal threshold cutoffs, *Journal of Cardiovascular Computed Tomography* (2017), doi: 10.1016/j.jcct.2017.04.009.

This is a PDF file of an unedited manuscript that has been accepted for publication. As a service to our customers we are providing this early version of the manuscript. The manuscript will undergo copyediting, typesetting, and review of the resulting proof before it is published in its final form. Please note that during the production process errors may be discovered which could affect the content, and all legal disclaimers that apply to the journal pertain.



**Practical Determination of Aortic Valve Calcium Volume Score on Contrast-Enhanced Computed Tomography Prior to Transcatheter Aortic Valve Replacement and Impact on Paravalvular Regurgitation: Elucidating Optimal Threshold Cutoffs**

Nicolas Bettinger, MD<sup>1,2\*</sup>, Omar K. Khalique, MD<sup>1\*</sup>, Joseph M. Krepp, MD, Nadira B. Hamid, MD<sup>1</sup>, David J. Bae, MD, Todd C. Pulerwitz, MD<sup>1</sup>, Ming Liao, M.A., Rebecca T. Hahn, MD<sup>1</sup>, Torsten P. Vahl, MD<sup>1</sup>, Tamim M. Nazif, MD<sup>1</sup>, Isaac George, MD<sup>1</sup>, Martin B. Leon<sup>1</sup>, MD, Andrew J Einstein, MD, PhD<sup>1</sup>, Susheel K. Kodali, MD<sup>1</sup>

1. Division of Cardiology, New-York-Presbyterian Hospital and Columbia University Medical Center, New York, New York; 2. Division of Cardiology, Hospital Charles Nicolle, University Hospital of Rouen, Rouen, France

\*Authors contributed equally to this manuscript

**Running title:** Accurate Contrast-Enhanced Calcium Detection Threshold

**Corresponding author:**

Omar Khalique, MD

Structural Heart and Valve Center

New York-Presbyterian and Columbia University Medical Center

161, Fort Washington Avenue, 6<sup>th</sup> floor, New York, NY 10032

Tel: 212-342-0444

Fax: 646-426-0204

E-mail: ok2203@cumc.columbia.edu

Download English Version:

<https://daneshyari.com/en/article/5614989>

Download Persian Version:

<https://daneshyari.com/article/5614989>

[Daneshyari.com](https://daneshyari.com)