

Accepted Manuscript

Validation and comparison of four models to calculate pretest probability of obstructive coronary artery disease in a Chinese population: A coronary computed tomographic angiography study

Jia Zhou, MD, Yujie Liu, MD, Lingyu Huang, MPH, Yahang Tan, MD, Xingchen Li, Hong Zhang, MD, Yanhe Ma, MD, PhD, Ying Zhang, MD

PII: S1934-5925(17)30117-X

DOI: [10.1016/j.jcct.2017.05.004](https://doi.org/10.1016/j.jcct.2017.05.004)

Reference: JCCT 991

To appear in: *Journal of Cardiovascular Computed Tomography*

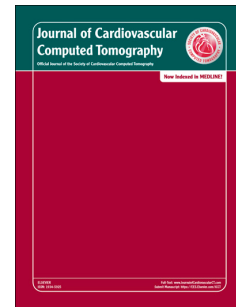
Received Date: 14 January 2017

Revised Date: 28 April 2017

Accepted Date: 8 May 2017

Please cite this article as: Zhou J, Liu Y, Huang L, Tan Y, Li X, Zhang H, Ma Y, Zhang Y, Validation and comparison of four models to calculate pretest probability of obstructive coronary artery disease in a Chinese population: A coronary computed tomographic angiography study, *Journal of Cardiovascular Computed Tomography* (2017), doi: 10.1016/j.jcct.2017.05.004.

This is a PDF file of an unedited manuscript that has been accepted for publication. As a service to our customers we are providing this early version of the manuscript. The manuscript will undergo copyediting, typesetting, and review of the resulting proof before it is published in its final form. Please note that during the production process errors may be discovered which could affect the content, and all legal disclaimers that apply to the journal pertain.



Validation and Comparison of Four Models to Calculate Pretest Probability of Obstructive Coronary Artery Disease in a Chinese Population: a Coronary Computed Tomographic Angiography Study

Short title: Validation of Model by Computed Tomography

Jia Zhou, MD^a, Yujie Liu, MD^a, Lingyu Huang, MPH^c, Yahang Tan, MD^b, Xingchen Li^d, Hong Zhang, MD^d, Yanhe Ma, MD, PhD^d, Ying Zhang, MD^{a,*}

^a Department of Cardiology, Tianjin Chest Hospital, Tianjin, China

^b Department of Cardiology, PLA General Hospital, Beijing, China

^c Institute of Cardiovascular Diseases, Tianjin Chest Hospital, Tianjin, China

^d Department of Radiology, Tianjin Chest Hospital, Tianjin, China

* Address for correspondence: Dr. Ying Zhang, Department of Cardiology, Tianjin Chest Hospital, 261 Taierzhuangnan Road, Tianjin, China.

E-Mail: zhangyingwenzhang@126.com

Conflict of interest

The authors declared they do not have anything to disclose regarding conflict of interest with respect to this manuscript.

Download English Version:

<https://daneshyari.com/en/article/5614991>

Download Persian Version:

<https://daneshyari.com/article/5614991>

[Daneshyari.com](https://daneshyari.com)